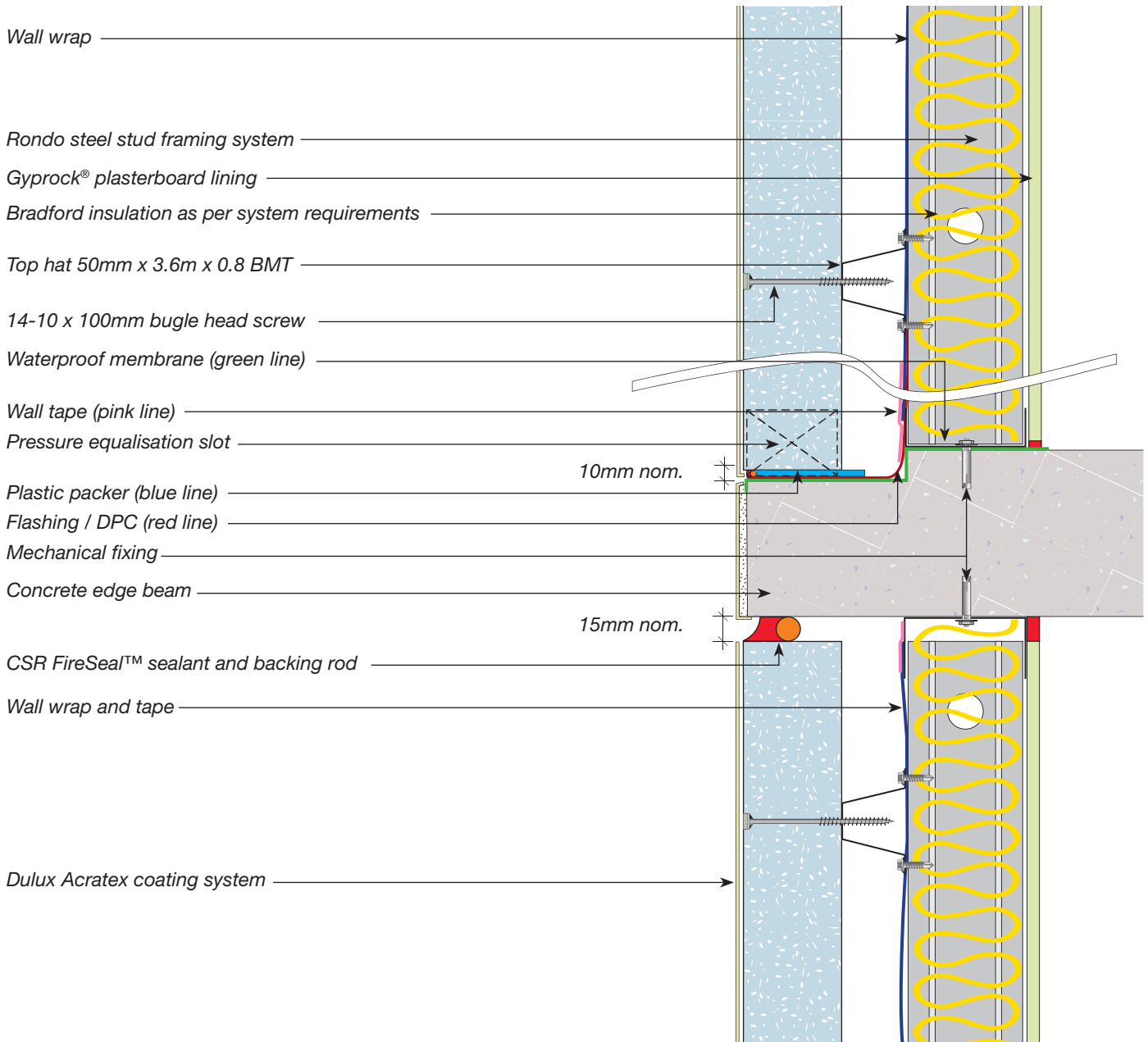


# FACADE

with visible slab



System	Application	FRL	Wall lining	Insulation	Acoustic rating		Wall width (mm)	Thermal values	
					$R_w + C_{tr}$	$R_w$		Winter	Summer
HEB 2001	External to Internal	-/180/180 external fire source only	13mm Gyprock CD	R2.0 90mm Glasswool	36	45	230 + coatings	3.15	2.94

Refer to Design & Installation Guides for High Rise Façades (HEBEL 1269) for more detailed information.



For more information or to speak to a Hebel representative call:

**1300 369 448** or [www.hebel.com.au](http://www.hebel.com.au)

Hebel® is a registered trademark of the Xella group. CSR Building Products Ltd is an exclusive licensee of Xella. CSR Hebel is a business of CSR Building Products Ltd ABN 55 008 631 356. Gyprock® is a registered trademark of CSR Building Products.

