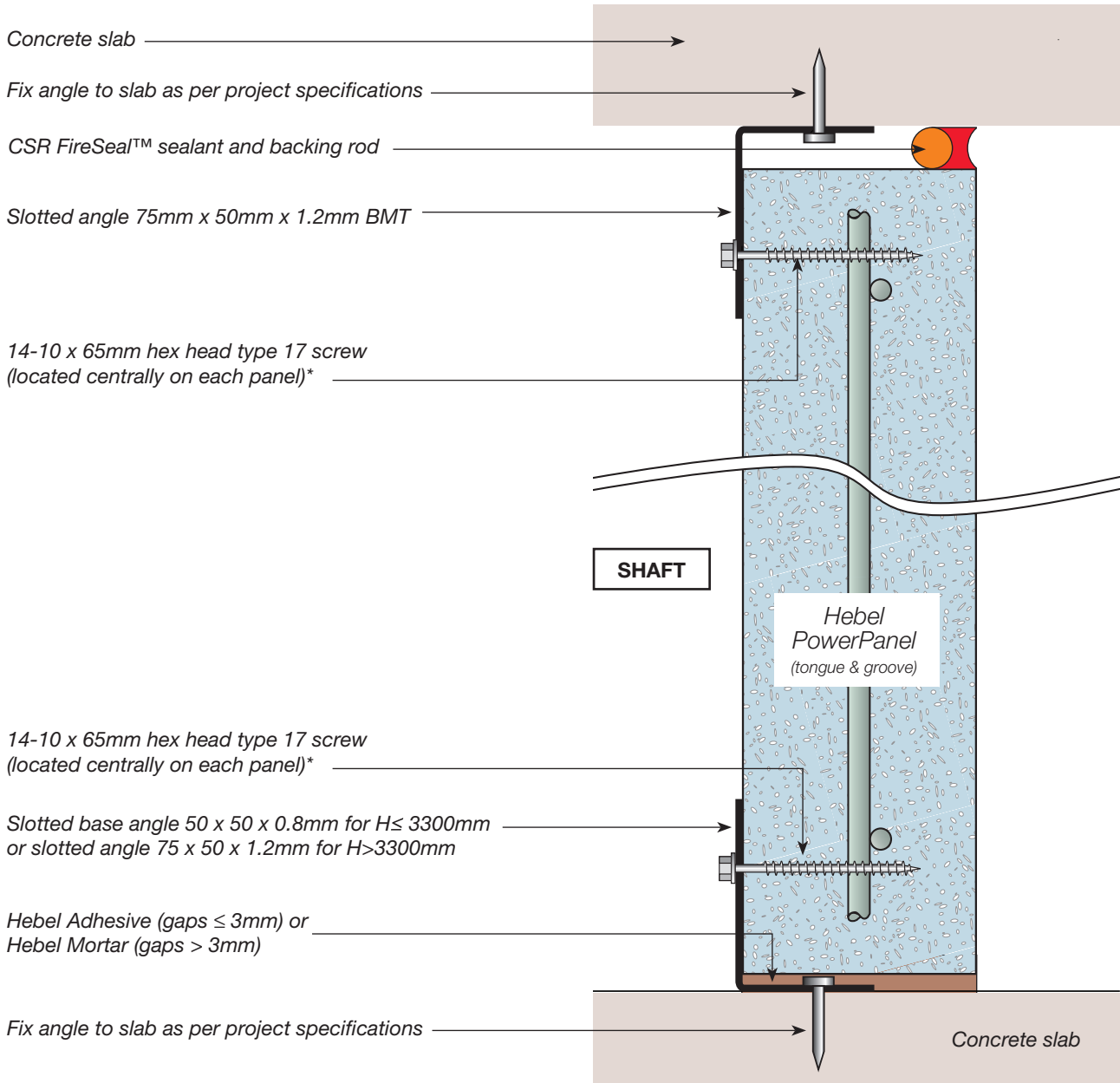


# SERVICES WALL

for walls up to 3.3 metres high



Code	Application	FRL <sup>(A)</sup>	Wall linings	Hebel component	Acoustic rating Rw <sup>(B)</sup>	Wall width (mm)	Paint finish
HEB 1400	Bare Shaft	-/90/90 for wall heights up to 3.3m	Nil	75mm PowerPanel T&G	33	75	Optional

NOTES:  
 (A) Also see Construction details section.  
 (B) Rw values are based on acoustic test ATF-676.

GENERAL NOTES:  
 1. HEB 1400 is designed to resist a maximum ultimate lateral pressure of 0.50kPa. Contact Hebel Technical Services if lateral pressures exceed 0.50kPa.



For more information or to speak to a Hebel representative call:

**1300 369 448** or [www.hebel.com.au](http://www.hebel.com.au)

