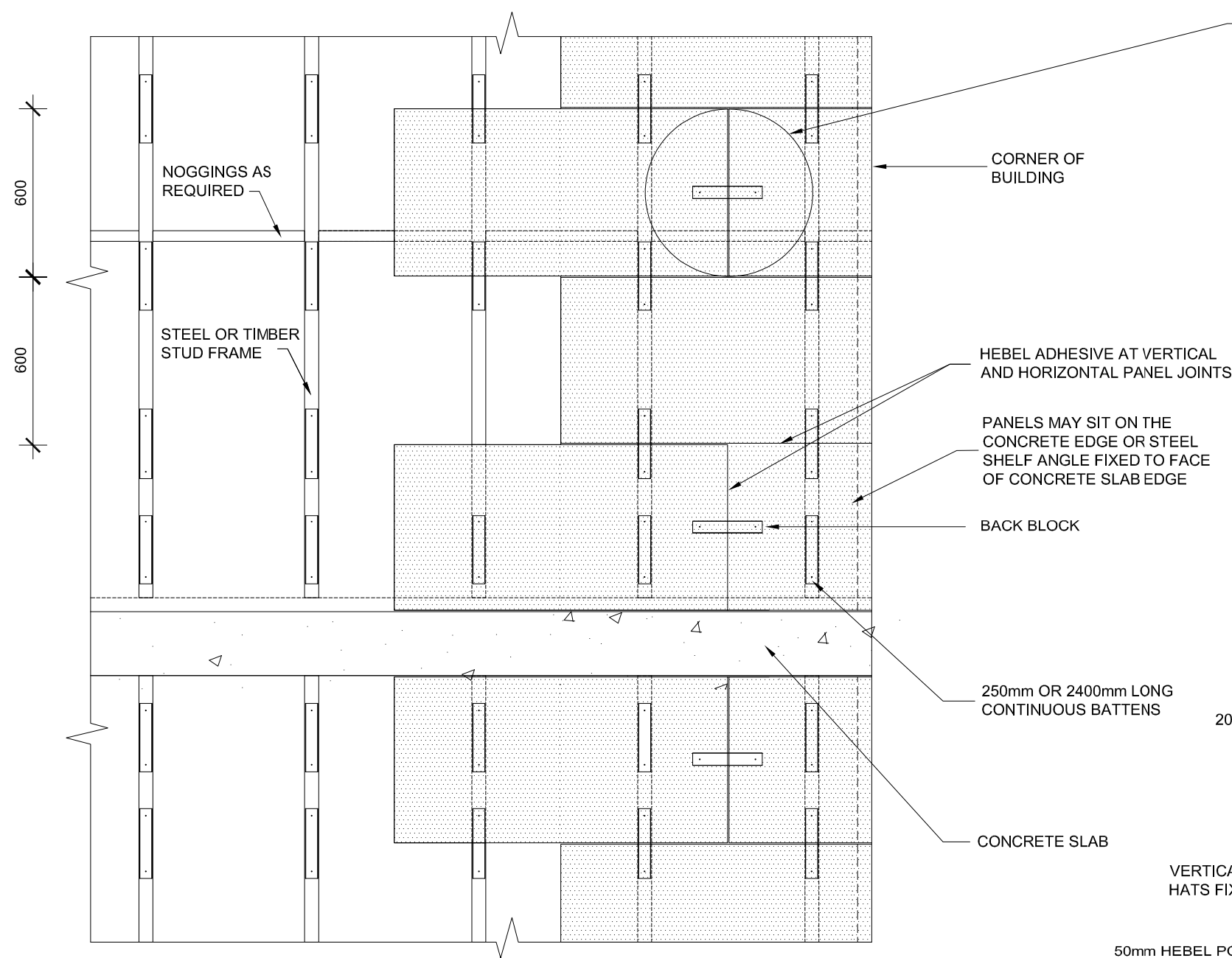
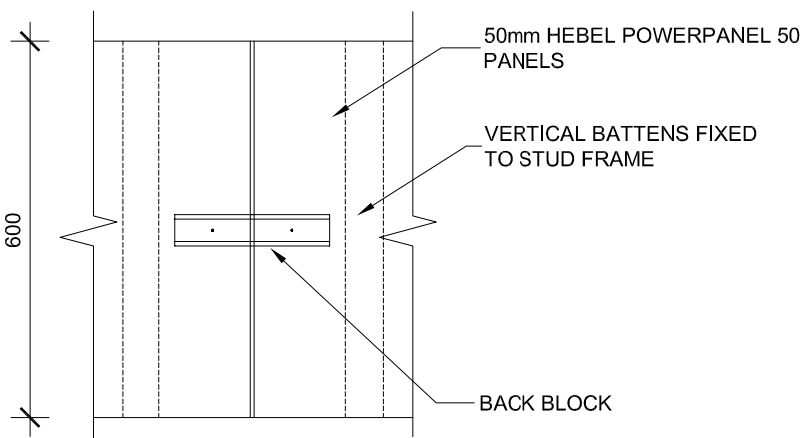


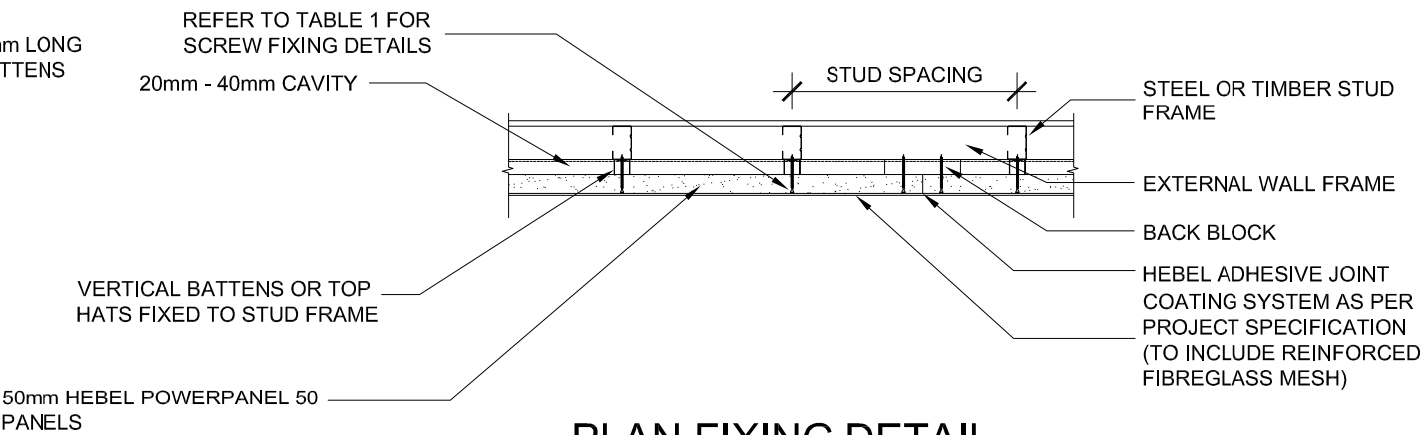
50mm HIGH RISE FACADE DETAILS - GENERAL ARRANGEMENT



LAYOUT ELEVATION
SCALE 1:20

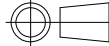


BACK BLOCK DETAIL
SCALE 1:20

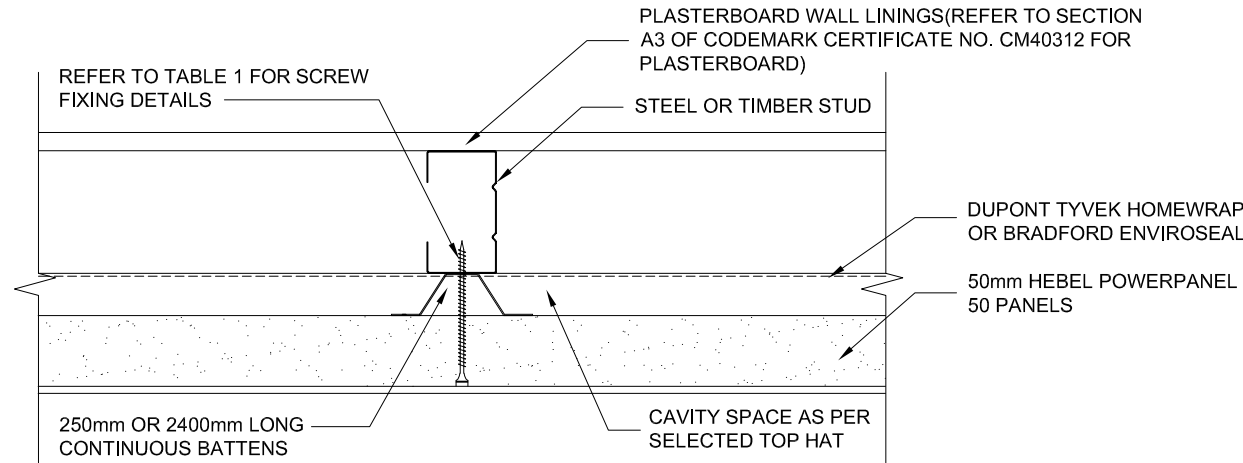


PLAN FIXING DETAIL
SCALE 1:20

- NOTE:
- 1. NON COMPRESSIBLE NON-COMBUSTIBLE PACKERS MAY BE USED BETWEEN THE BATTENS AND STUDS TO ALIGN THE HEBEL PANELS
 - 2. PANELS NOT TESTED FOR IMPACT LOADING FROM WINDBORNE DEBRIS IN REGIONS C & D AS PER AS1170.2. BUILDING DESIGNER SHOULD ADDITIONALLY ALLOW FOR INTERNAL PRESSURES RESULTING FROM DOMINANT OPENINGS.

| | | | | |
|------------|---|---|--|------------------|
| Scale | AS SHOWN | HEBEL NORTH RYDE - NSW - Australia | Drawn E.T. | Date 22.03.21 |
| Tolerances | AS SHOWN | This document is confidential. This document and its copyright are the property of or licensed to CSR Limited, and must not be used, disclosed or reproduced in any form whatsoever except as authorised in writing. This document must be returned with quotation and/or on completion of the project as applicable. | Checked N.G. | Date 22.03.21 |
| | DRAWN TO AS 1100 | | Approved N.G. | Date 22.03.21 |
| |  | | Project: 50mm HEBEL POWERPANEL HORIZONTAL FACADE | |
| | DIMENSIONS IN MILLIMETRES DO NOT SCALE | 50mm FACADE GENERAL ARRANGEMENT | Drawing Number PP50-H-F-001 | |
| | | | Sheet 1 of | Revision E |

50mm HIGH RISE FACADE DETAILS - COMPONENTS AND FIXING DETAILS

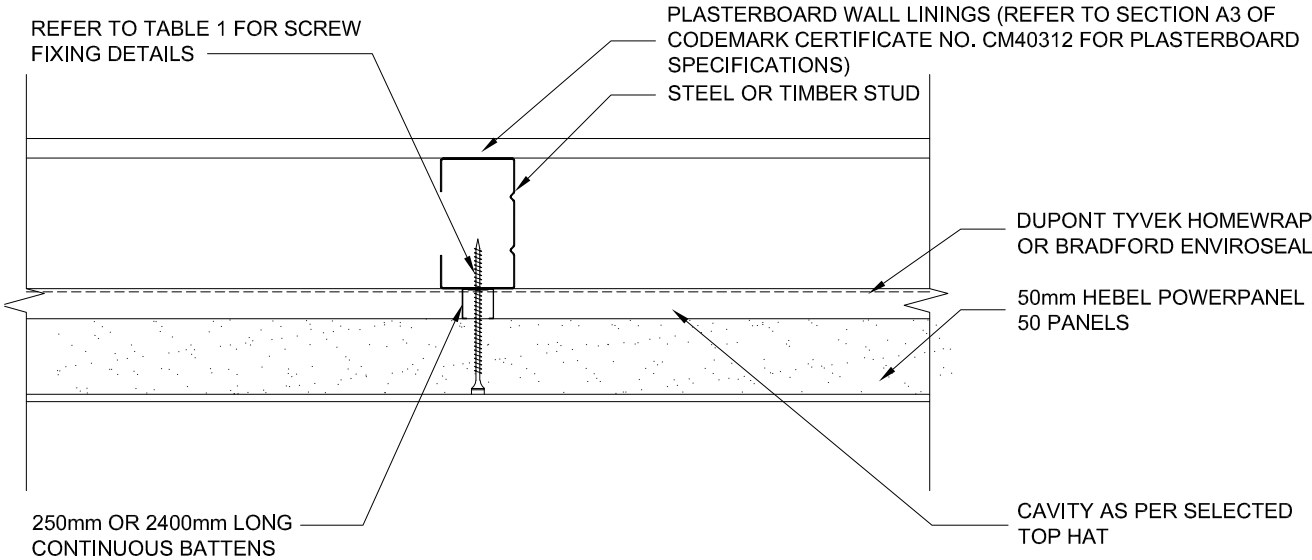


TYPICAL FIXING DETAIL - PLAN VIEW

SCALE: 1:5

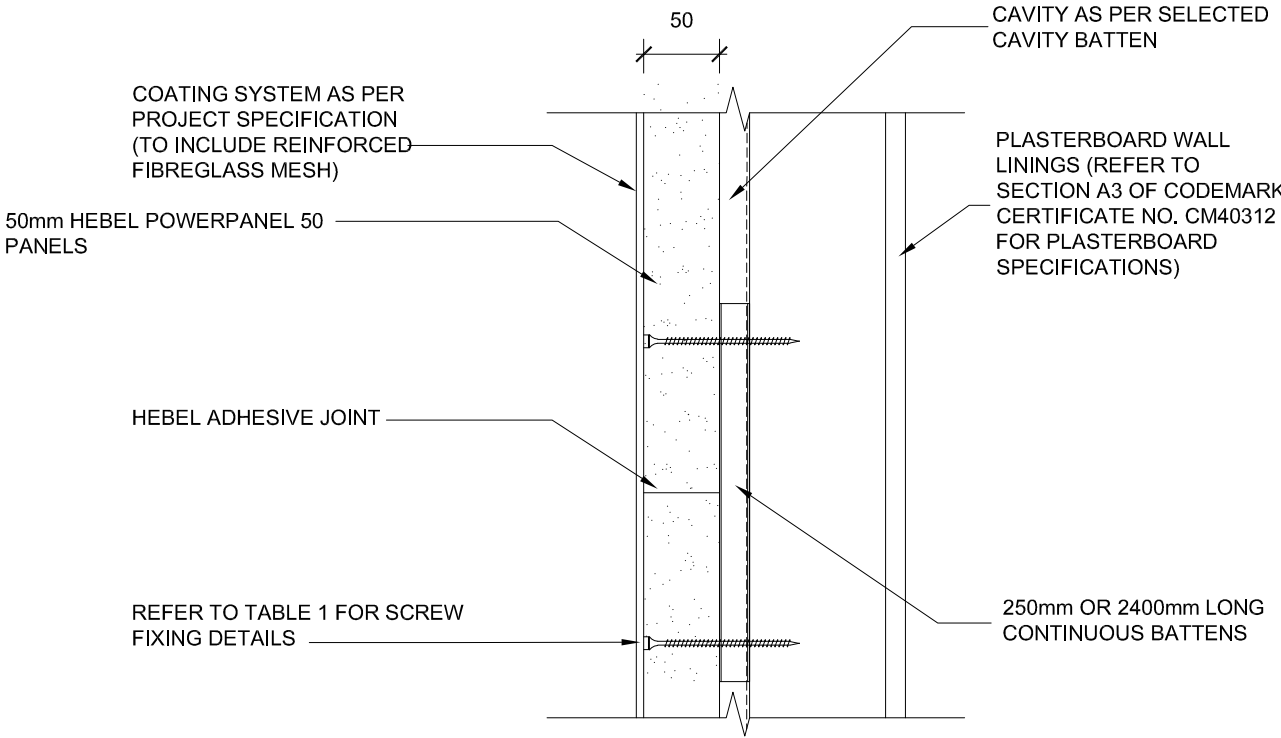
TABLE 1

| SYSTEM COMPONENT | COMPONENT DETAILS | NOTES |
|--|--|---|
| 50mm HEBEL POWERPANEL | 2000mm x 600mm x 50mm 2400mm x 600mm x 50mm 2550mm x 600mm x 50mm 2700mm x 600mm x 50mm 2850mm x 600mm x 50mm 3000mm x 600mm x 50mm | |
| STEEL FRAME | 92 mm STEEL FRAME | STEEL STUD TO BE DESIGNED AND CONSTRUCTED IN ACCORDANCE WITH AS 3623 AND AS/N25 4600 |
| TIMBER FRAME | 90 mm TIMBER FRAME | TIMBER STUD TO BE DESIGNED AND CONSTRUCTED IN ACCORDANCE WITH AS 1684 |
| BATTENS/ BACK BLOCKS | 20mm STEEL CAVITY BATTEN | 0.42 THICK GALVANISED STEEL. 35x20x(250mm OR CONTINUOUS) OR 35x40x(250mm OR CONTINUOUS) |
| | 40mm STEEL CAVITY BATTEN | |
| | RONDO 310 | 0.55 THICK GALVANISED STEEL. F _y =270MPa. COATING CLASS Z275. |
| | 24mm PERFORATED STEEL TOP HAT | 0.42 THICK GALVANISED STEEL. F _y =550MPa. COATING CLASS AZ150. |
| | 35mm PERFORATED STEEL TOP HAT | 0.55 THICK GALVANISED STEEL. F _y =270MPa. COATING CLASS Z275. |
| TEMPORARY FIXINGS TO FIX STEEL BATTENS TO STEEL FRAME | 10-16x16mm HEX HEAD TEK SCREW | CLASS 3 |
| TEMPORARY FIXINGS TO FIX STEEL BATTENS TO TIMBER FRAME | 12-11x35mm HEX HEAD TYPE 17 SCREW | CLASS 3 |
| SCREWS TO FIX 50mm HEBEL POWERPANEL THROUGH BATTEN INTO STEEL FRAME | 14-10x100mm MP BUGLE HEAD TYPE 17 SCREW | CLASS 3 |
| SCREWS TO FIX 50mm HEBEL POWERPANEL THROUGH BATTEN INTO TIMBER FRAME | 14-10x150mm HEX HEAD TYPE 17 SCREW | CLASS 3 |



TYPICAL FIXING DETAIL (FOR 20mm OR 40mm CAVITY BATTENS) - PLAN VIEW

SCALE: 1:5



TYPICAL FIXING DETAIL - SIDE VIEW


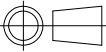
SCALE: 1:5

TABLE 2

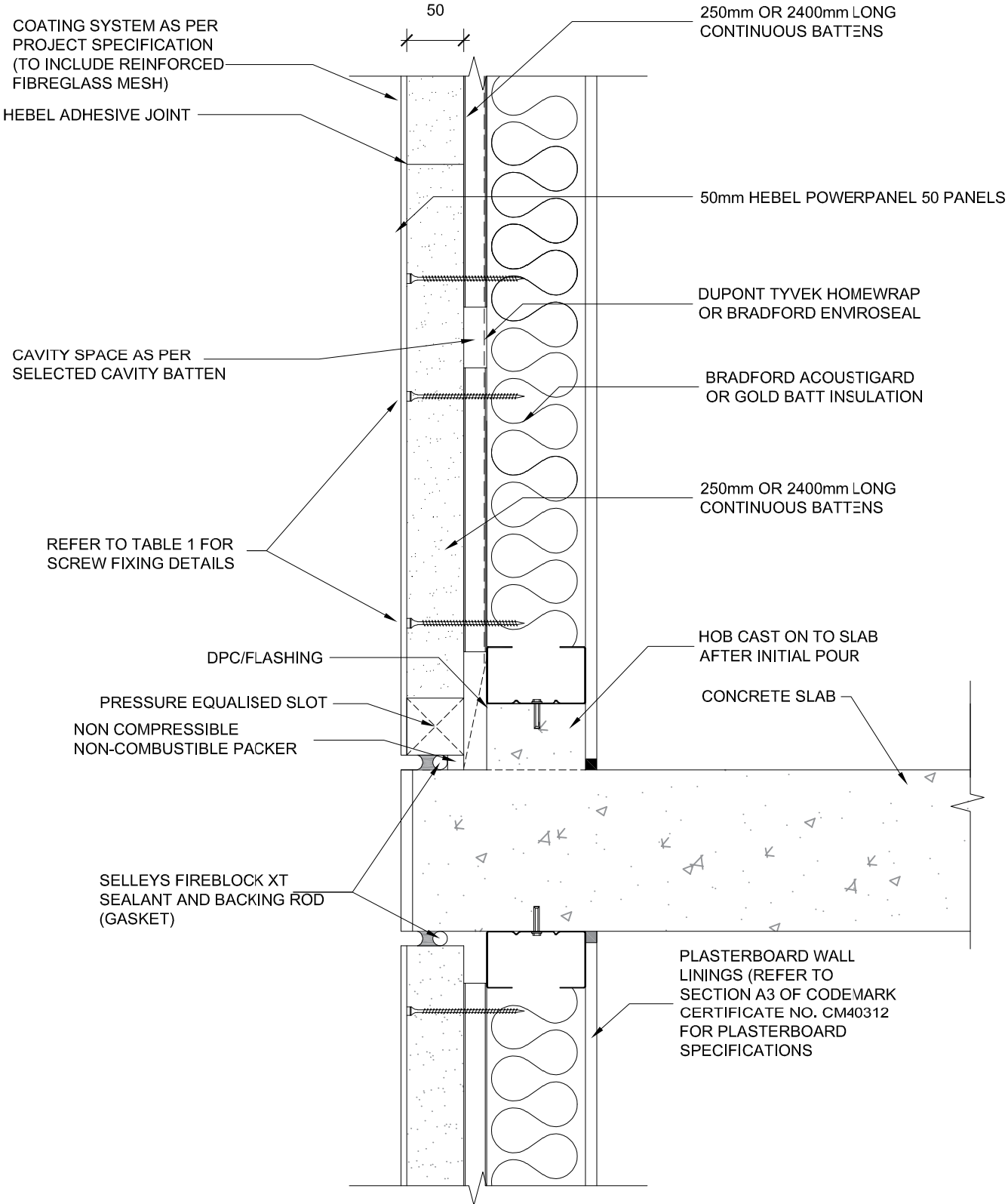
| ULS WIND PRESSURE (KPA) | STUD SPACING (MM) | NUMBER OF SCREWS PER 600mm WIDE PANEL PER STUD |
|-------------------------|-------------------|--|
| 1.95 | 600 | 2 |
| 2.9 | 600 | 3 |
| 4.27 | 450 | 3 |

- NOTE
- STUD FRAME MUST BE DESIGNED TO LIMIT THE LATERAL DEFLECTION TO H/360 UNDER SERVICEABILITY WIND PRESSURE ACCORDANCE WITH AS1170.2.
 - WHERE 3 SCREWS ARE REQUIRED FOR 600mm WIDE PANEL PER STUD, A CONTINUOUS BATTEN IS TO BE USED.

- NOTE:
- NON COMPRESSIBLE NON-COMBUSTIBLE PACKERS MAY BE USED BETWEEN THE BATTENS AND STUDS TO ALIGN THE HEBEL PANELS
 - PANELS NOT TESTED FOR IMPACT LOADING FROM WINDBORNE DEBRIS IN REGIONS C & D AS PER AS1170.2. BUILDING DESIGNER SHOULD ADDITIONALLY ALLOW FOR INTERNAL PRESSURES RESULTING FROM DOMINANT OPENINGS.

| | | | | |
|--|--|---|--|------------------|
| Scale | AS SHOWN |  HEBEL NORTH RYDE - NSW - Australia | Drawn E.T | Date 22.03.21 |
| | | | Checked N.G | Date 22.03.21 |
| Tolerances | AS SHOWN | This document is confidential. This document and its copyright are the property of or licensed to CSR Limited, and must not be used, disclosed or reproduced in any form whatsoever except as authorised in writing. This document must be returned with quotation and/or on completion of the project as applicable. | Approved N.G | Date 22.03.21 |
| | | | Project: 50mm HEBEL POWERPANEL HORIZONTAL FACADE | |
| DRAWN TO AS 1100  DIMENSIONS IN MILLIMETRES DO NOT SCALE | 50mm FACADE COMPONENTS AND FIXING DETAILS | | Drawing Number PP50-H-F-002 | |
| | | | Sheet 2 of | Revision E |

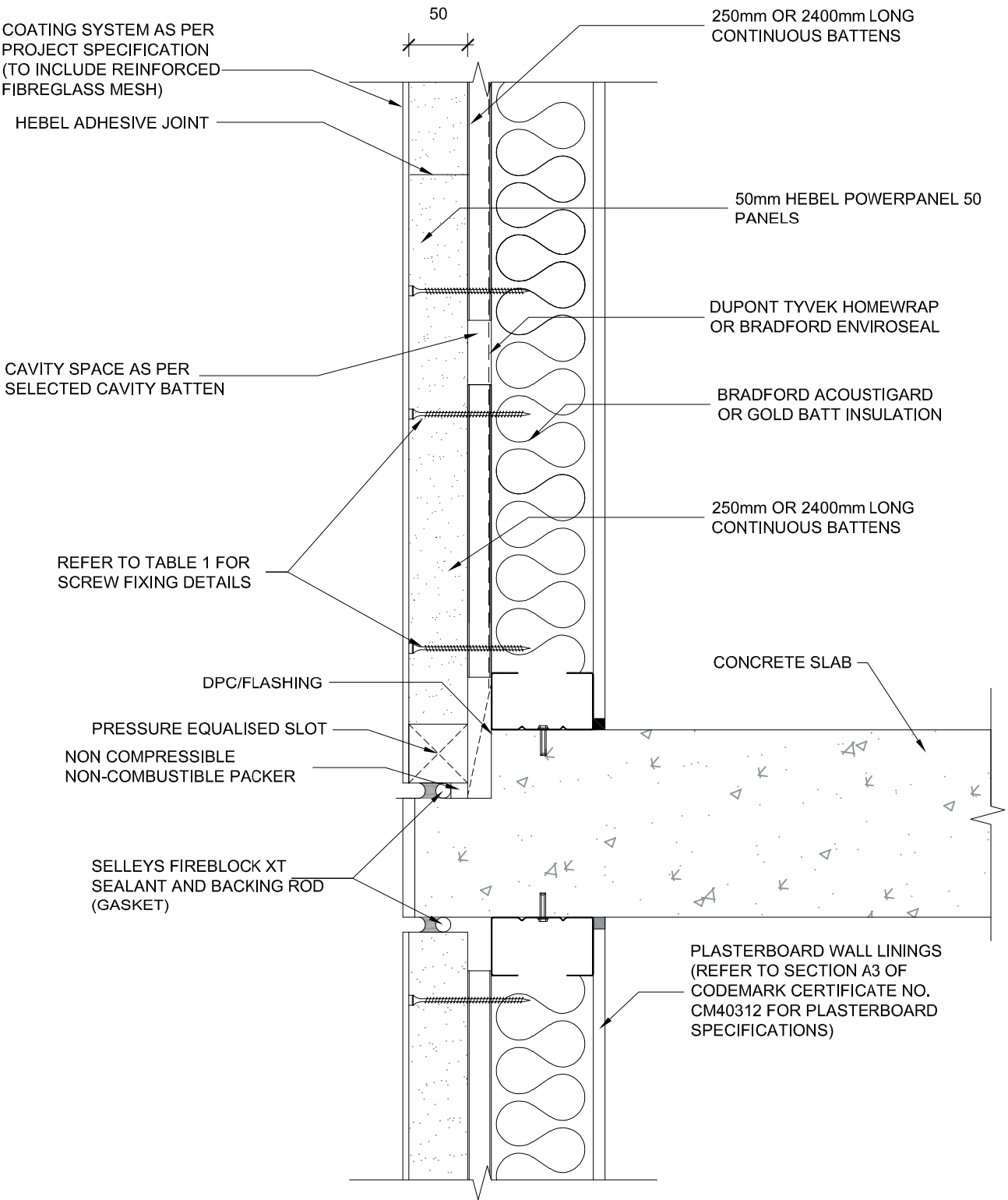
50mm HIGH RISE FACADE - VISIBLE SLAB EDGE DETAIL



SLAB EDGE (EXPOSED) DETAIL - HEAD AND BASE DETAILS (HOB)

SCALE: 1:5

NOTE
1) SELLEYS FIREBLOCK XT SHALL BE APPLIED WITH MINIMUM SEALANT DEPTH OF 16mm FOR WIDTHS UP TO 20mm.

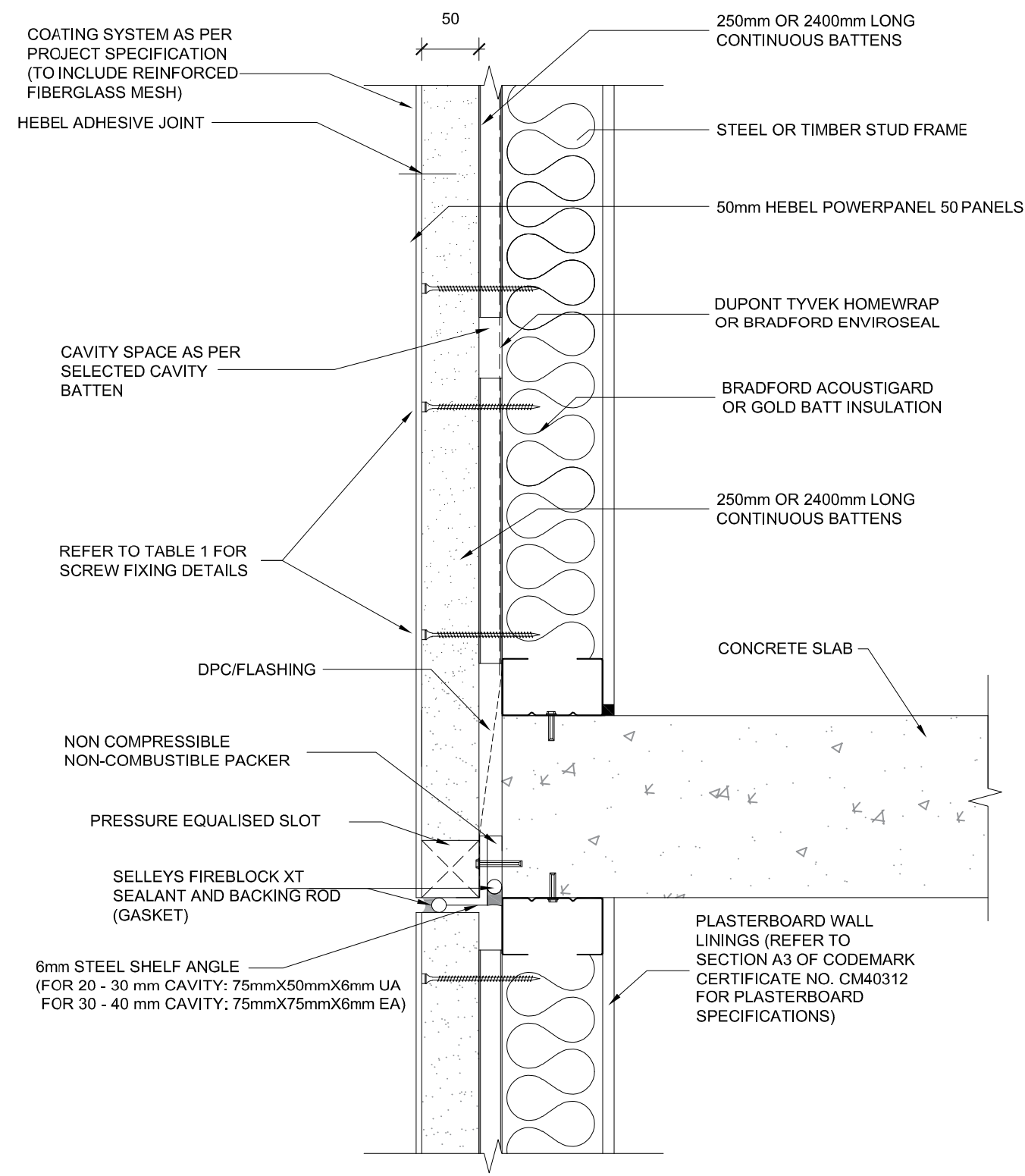


SLAB EDGE (EXPOSED) DETAIL - HEAD AND BASE DETAILS

SCALE: 1:5

| | | | | |
|---|----------|---|--|------------------|
| Scale | AS SHOWN | HEBEL NORTH RYDE - NSW - Australia | Drawn E.T. | Date 22.03.21 |
| Tolerances | AS SHOWN | This document is confidential. This document and its copyright are the property of or licensed to CSR Limited, and must not be used, disclosed or reproduced in any form whatsoever except as authorised in writing. This document must be returned with quotation and/or on completion of the project as applicable. | Checked N.G. | Date 22.03.21 |
| DRAWN TO AS 1100 | | | Approved N.G. | Date 22.03.21 |
| DIMENSIONS IN MILLIMETRES DO NOT SCALE | | 50mm FACADE VISIBLE SLAB EDGE DETAIL | Project: 50mm HEBEL POWERPANEL HORIZONTAL FACADE | |
| | | | Drawing Number PP50-H-F-003 | |
| | | | Sheet 3 of | Revision E |

50mm HIGH RISE FACADE - HIDDEN SLAB EDGE DETAIL



SLAB EDGE (HIDDEN) DETAIL - HEAD AND BASE DETAILS

SCALE: 1:5

- NOTE
- 1) SELLEYS FIREBLOCK XT MAY ALTERNATIVELY BE APPLIED BEHIND THE TOP OF THE STEEL ANGLE PROVIDED ALL BOLT HOLES ARE ALSO SEALED WITH FIREBLOCK XT.
 - 2) SELLEYS FIREBLOCK XT SHALL BE APPLIED WITH MINIMUM SEALANT DEPTH OF 16mm FOR WIDTHS UP TO 20mm.
 - 3) CARE MUST BE TAKEN BY THE FRAMING CONTRACTOR TO ALIGN WALLS FROM ADJACENT LEVELS.
 - 4) ALL SHELF ANGLE ANCHORS MUST CONTAIN A MINIMUM EDGE DISTANCE OF 70mm TO UNDERSIDE OF SLAB.
 - 5) SHELF ANGLE ANCHORS MAY BE:
 - M12 HILTI HVU GALVANISED CHEMICAL ANCHORS AT 900mm MAX CENTRES (110mm EMBEDMENT DEPTH)
 - M10 HILTI HVU GALVANISED CHEMICAL ANCHORS AT 450mm MAX CENTRES (90mm EMBEDMENT DEPTH)
 - HILTI HSA-F M10 GALVANISED MECHANICAL ANCHORS AT 600mm MAX CENTRES (50mm EMBEDMENT INTO UNCRACKED CONCRETE, 150mm MIN. THICKNESS.
 - 6) MIN GRADE OF STEEL SHELF ANGLE IS G250 (GALVANISED)

| | | | | |
|---|----------|---|--|------------------|
| Scale | AS SHOWN | HEBEL NORTH RYDE - NSW - Australia | Drawn E.T. | Date 22.03.21 |
| Tolerances | AS SHOWN | This document is confidential. This document and its copyright are the property of or licensed to CSR Limited, and must not be used, disclosed or reproduced in any form whatsoever except as authorised in writing. This document must be returned with quotation and/or on completion of the project as applicable. | Checked N.G. | Date 22.03.21 |
| DRAWN TO AS 1100 | | 50mm FACADE HIDDEN SLAB EDGE DETAIL | Approved N.G. | Date 22.03.21 |
| DIMENSIONS IN MILLIMETRES DO NOT SCALE | | | Project: 50mm HEBEL POWERPANEL HORIZONTAL FACADE | |
| | | | Drawing Number PP50-H-F-004 | |
| | | | Sheet 4 of | Revision E |

50mm HIGH RISE FACADE DETAILS - SYSTEM PERFORMANCE

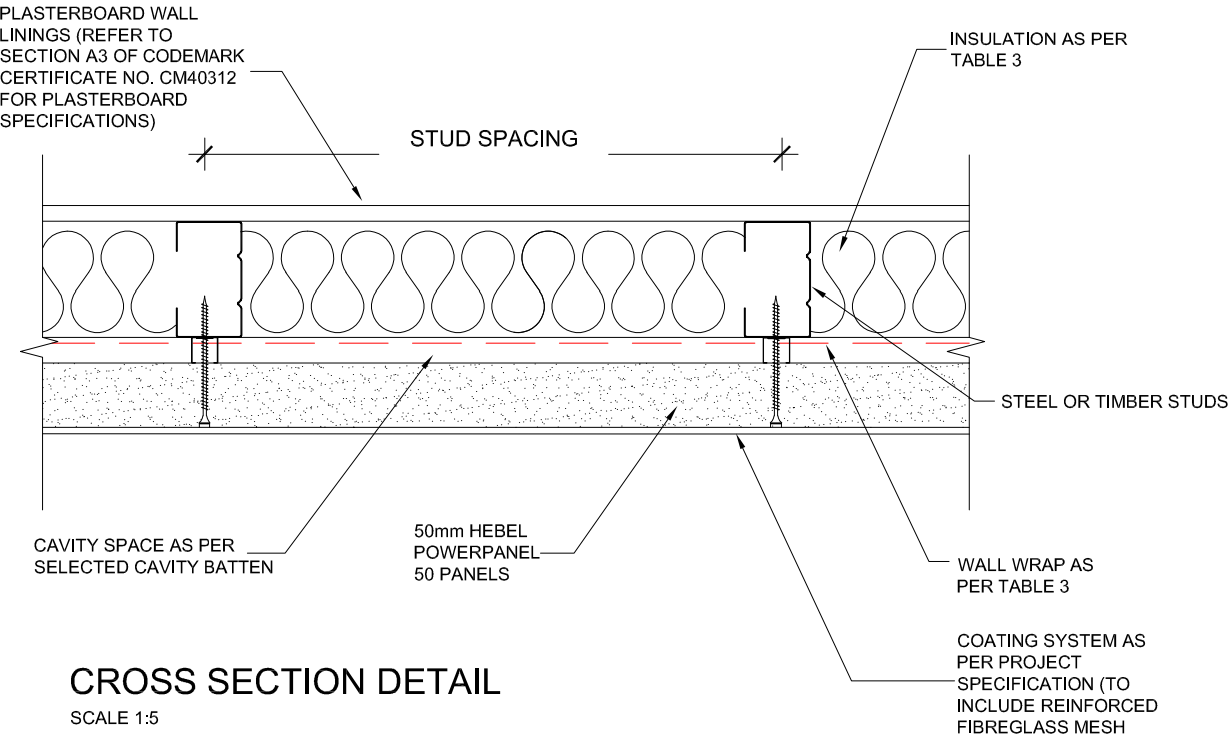



TABLE 3

| DESCRIPTION | | | | | TOTAL R-VALUE m².K/W | | ACOUSTIC | |
|--------------------------------------|-------------------------------|------------------------------------|---|---------------|----------------------|--------|----------|----------|
| INTERNAL LINING | STUD FRAME | INSULATION BATTS | WALL WRAP | BATTEN CAVITY | SUMMER | WINTER | Rw | Rw + Ctr |
| 1x13mm GYPROCK STANDARD PLASTERBOARD | 90mm OR 92mm STEEL STUD FRAME | 90mm BRADFORD GOLD WALL BATTS R2.5 | BRADFORD ENVIROSEAL CW OR BRADFORD ENVIROSEAL RW OR DUPONT TYVEK HOMEWRAP | 20mm MIN. | 2.48 | 2.6 | 49 | 35 |
| | | 90mm BRADFORD GOLD WALL BATTS R2.7 | | | 2.59 | 2.7 | 49 | 35 |
| | | 90mm BRADFORD GOLD WALL BATTS R2.7 | AMETALIN FIRESARK BREATHER OR BRADFORD THERMOSEAL FIRESPEC | | 3.04 | 3.15 | 49 | 35 |
| 1x16mm GYPROCK FYRCHEK | | 90mm BRADFORD GOLD WALL BATTS R2.5 | BRADFORD ENVIROSEAL CW OR BRADFORD ENVIROSEAL RW OR DUPONT TYVEK HOMEWRAP | | 2.35 | 2.45 | 50 | 37 |
| | | 90mm BRADFORD GOLD WALL BATTS R2.7 | | | 2.45 | 2.54 | 50 | 37 |
| | | 90mm BRADFORD GOLD WALL BATTS R2.7 | AMETALIN FIRESARK BREATHER OR BRADFORD THERMOSEAL FIRESPEC | | 2.88 | 2.97 | 50 | 37 |
| 2x13mm GYPROCK FYRCHEK | | 90mm BRADFORD GOLD WALL BATTS R2.5 | BRADFORD ENVIROSEAL CW OR BRADFORD ENVIROSEAL RW OR DUPONT TYVEK HOMEWRAP | | 2.46 | 2.57 | 52 | 43 |
| | | 90mm BRADFORD GOLD WALL BATTS R2.7 | | | 2.57 | 2.67 | 52 | 43 |
| | | 90mm BRADFORD GOLD WALL BATTS R2.7 | AMETALIN FIRESARK BREATHER OR BRADFORD THERMOSEAL FIRESPEC | | 2.99 | 3.09 | 52 | 43 |
| 2x16mm GYPROCK FYRCHEK | | 90mm BRADFORD GOLD WALL BATTS R2.5 | BRADFORD ENVIROSEAL CW OR BRADFORD ENVIROSEAL RW OR DUPONT TYVEK HOMEWRAP | | 2.52 | 2.64 | 53 | 44 |
| | | 90mm BRADFORD GOLD WALL BATTS R2.7 | | | 2.63 | 2.74 | 53 | 44 |
| | | 90mm BRADFORD GOLD WALL BATTS R2.7 | AMETALIN FIRESARK BREATHER OR BRADFORD THERMOSEAL FIRESPEC | | 3.05 | 3.15 | 53 | 44 |

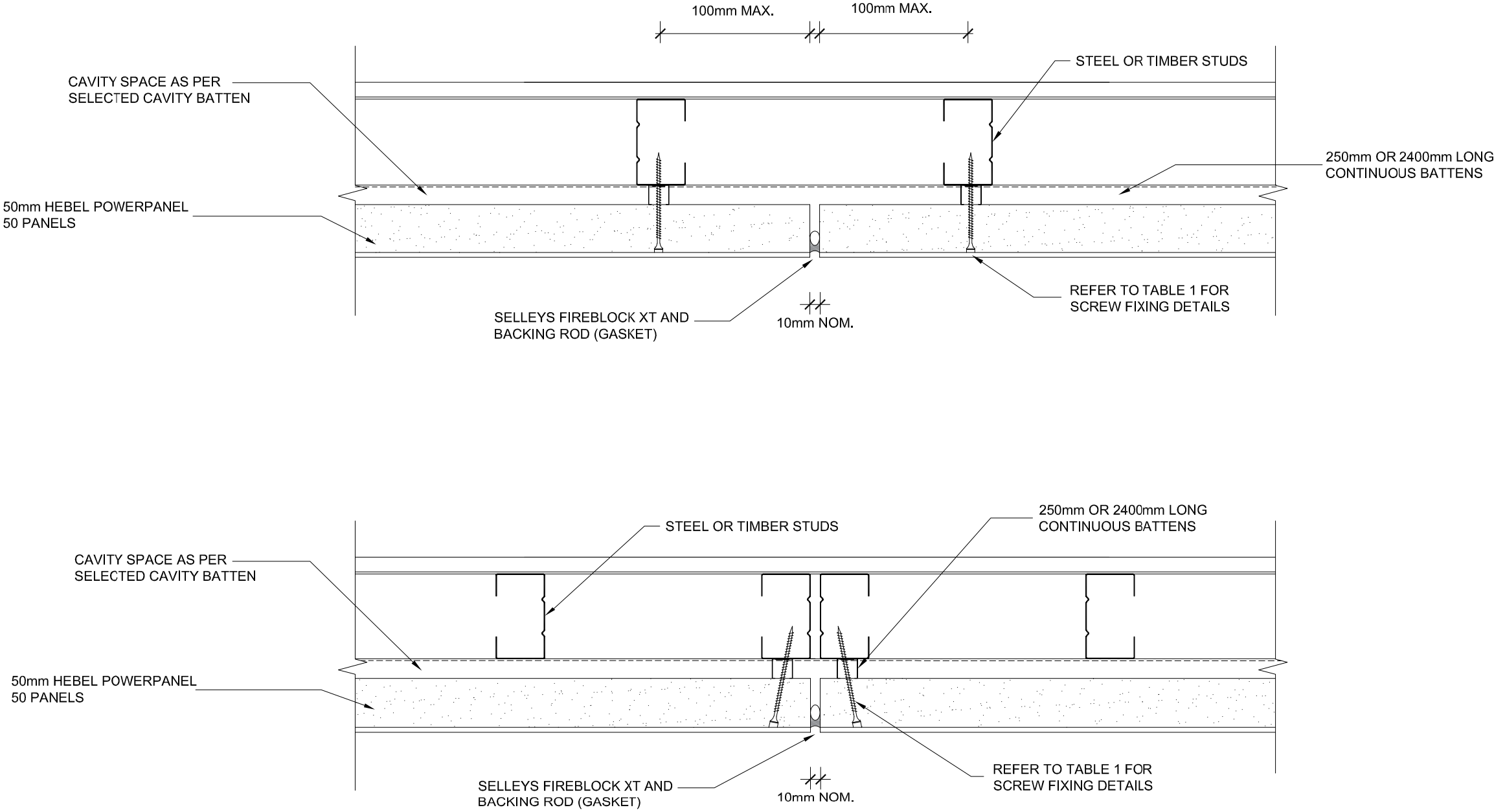
TABLE 4

| DESCRIPTION | | FRL |
|--------------------------------------|-----------------------|---|
| INTERNAL LINING | STUD FRAME | |
| 1x13mm GYPROCK STANDARD PLASTERBOARD | TIMBER OR STEEL FRAME | -/60/60 OR 60/60/60 (OUTSIDE ONLY) |
| 1x16mm FYRCHEK | TIMBER FRAME | -/60/60 OR 60/60/60 (INSIDE AND OUTSIDE) |
| 1x13mm OR 1x16mm FYRCHEK | STEEL FRAME | -/60/60 OR 60/60/60 (INSIDE AND OUTSIDE) |
| 1x13mm GYPROCK STANDARD PLASTERBOARD | TIMBER OR STEEL FRAME | -/90/90 OR 90/90/90 (OUTSIDE ONLY) |
| 2x13mm OR 1x16mm FYRCHEK | TIMBER OR STEEL FRAME | -/90/90 OR 90/90/90 (INSIDE AND OUTSIDE) |
| 1x13mm GYPROCK STANDARD PLASTERBOARD | TIMBER OR STEEL FRAME | -/120/120 OR 120/120/120 (OUTSIDE ONLY) |
| 2x13mm OR 2x16mm FYRCHEK | TIMBER OR STEEL FRAME | -/120/120 OR 120/120/120 (INSIDE AND OUTSIDE) |

- NOTE
- 1) THE MAXIMUM STUD SPACING IS 450mm CENTRES FOR THE SYSTEM OPTIONS THAT CONTAIN GYPROCK FYRCHEK AS THE INTERNAL LINING.
 - 2) DULUX ACRATEX RENDER AND COATING SYSTEM HAS BEEN INCLUDED IN TOTAL R-VALUE OF THE WALL SYSTEMS PROVIDED IN TABLE 3.
 - 3) BRADFORD GOLD WALL BATTS HAS BEEN TESTED TO AS1530.1 AND IS DEEMED NON-COMBUSTIBLE.
 - 4) BRADFORD ENVIROSEAL RW, BRADFORD ENVIROSEAL CW, DUPONT TYVEK HOMEWRAP AND AMETALIN FIRESARK BREATHER ARE VAPOUR PERMEABLE AND CAN BE USED IN CLIMATE ZONES 2 TO 8.
 - 5) BRADFORD THERMOSEAL FIRESPEC IS A VAPOUR BARRIER AND CAN BE USED IN CLIMATE ZONES 1 TO 5 (AS PER PROJECT SPECIFICATIONS).
 - 6) WALL WRAPS SPECIFIED IN TABLE 3 CONTAIN A FLAMMABILITY INDEX < 5 AND ARE LESS THAN 1mm THICK. THEREFORE THESE WALL WRAPS ARE DEEMED NON-COMBUSTIBLE IN ACCORDANCE WITH NCC 2019 Amdt 1.
 - 7) WALL WRAPS ARE MANDATORY AS PART OF THE PRESSURE EQUALISATION SYSTEM TO ACHIEVE WEATHERTIGHTNESS.
 - 8) THE TAPE(S) USED TO AFFIX WALL WRAPS TO THE STEEL STUD FRAME ARE TO BE COMPATIBLE WITH THE WALL WRAP TYPE AND AS RECOMMENDED BY THE WALL WRAP MANUFACTURER AND ARE TO SATISFY THE SAME PROPERTIES AS OUTLINED ABOVE.
 - 9) THE THERMAL VALUES ARE BASED ON STEEL FRAMED STRUCTURES. THE OVERALL SURFACE FOR TIMBER FRAMED STRUCTURES IS HIGHER THAN EQUIVALENT STEEL FRAMED STRUCTURES.
 - 10) THE ACOUSTIC VALUES ARE BASED ON STEEL FRAMED STRUCTURES.
 - 11) FRL OF THE WALL SYSTEMS ARE BASED ON IGNS-8349 I02 R04 ISSUED 17.03.2021

| | | | |
|---|---|---|------------------|
| Scale AS SHOWN |  <div>HEBEL NORTH RYDE - NSW - Australia</div> | Drawn E.T | Date 22.03.21 |
| | | Checked N.G | Date 22.03.21 |
| Tolerances AS SHOWN | This document is confidential. This document and its copyright are the property of or licensed to CSR Limited, and must not be used, disclosed or reproduced in any form whatsoever except as authorised in writing. This document must be returned with quotation and/or on completion of the project as applicable. | Approved N.G | Date 22.03.21 |
| | | Project: 50mm HEBEL POWERPANEL HORIZONTAL FACADE | |
| <div>DRAWN TO AS 1100</div>  <div>DIMENSIONS IN MILLIMETRES DO NOT SCALE</div> | 50mm FACADE PERFORMANCE VALUES | Drawing Number PP50-H-F-005 | |
| | | Sheet 5 of | Revision E |

50mm HIGH RISE FACADE DETAILS - VERTICAL CONTROL JOINTS


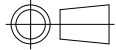


TYPICAL VERTICAL CONTROL JOINTS

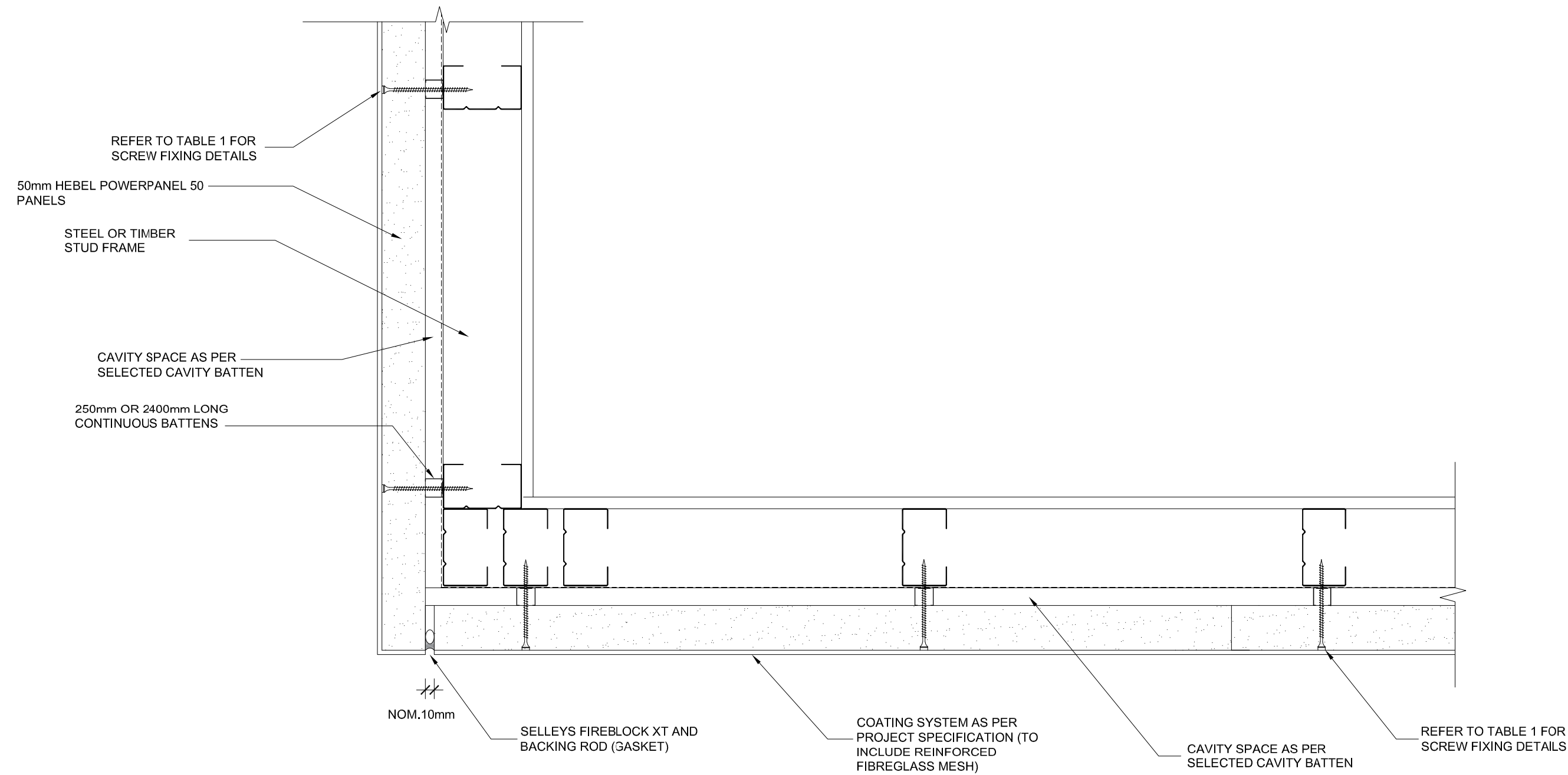
SCALE: 1:5

NOTE:


- 1) MAXIMUM SPACING OF CONTROL JOINTS TO BE LIMITED TO 6m
- 2) A CONTROL JOINT IN THE WALL MUST OCCUR AT CONTROL JOINT LOCATIONS IN THE PRIMARY SUPPORT STRUCTURE
- 3) FOR WINDOW/ DOOR OPENINGS LESS THAN OR EQUAL TO 2400mm, A CONTROL JOINT IS TO BE PROVIDED TO ONE SIDE OF THE WINDOW/ DOOR OPENING.
- 4) FOR WINDOW/ DOOR OPENINGS GREATER THAN 2400mm, A CONTROL JOINT IS TO BE PROVIDED TO BOTH SIDES OF THE WINDOW/ DOOR OPENING.

| | | | | |
|------------|---|---|--|------------------|
| Scale | AS SHOWN |  <div>HEBEL NORTH RYDE - NSW - Australia</div> | Drawn E.T. | Date 22.03.21 |
| | | | Checked N.G. | Date 22.03.21 |
| Tolerances | AS SHOWN | | Approved N.G. | Date 22.03.21 |
| | DRAWN TO AS 1100 | 50mm FACADE VERTICAL JUNCTIONS - CONTROL JOINTS | Project: 50mm HEBEL POWERPANEL HORIZONTAL FACADE | |
| |  | | Drawing Number PP50-H-F-006 | |
| | DIMENSIONS IN MILLIMETRES DO NOT SCALE | | Sheet 6 of | Revision E |

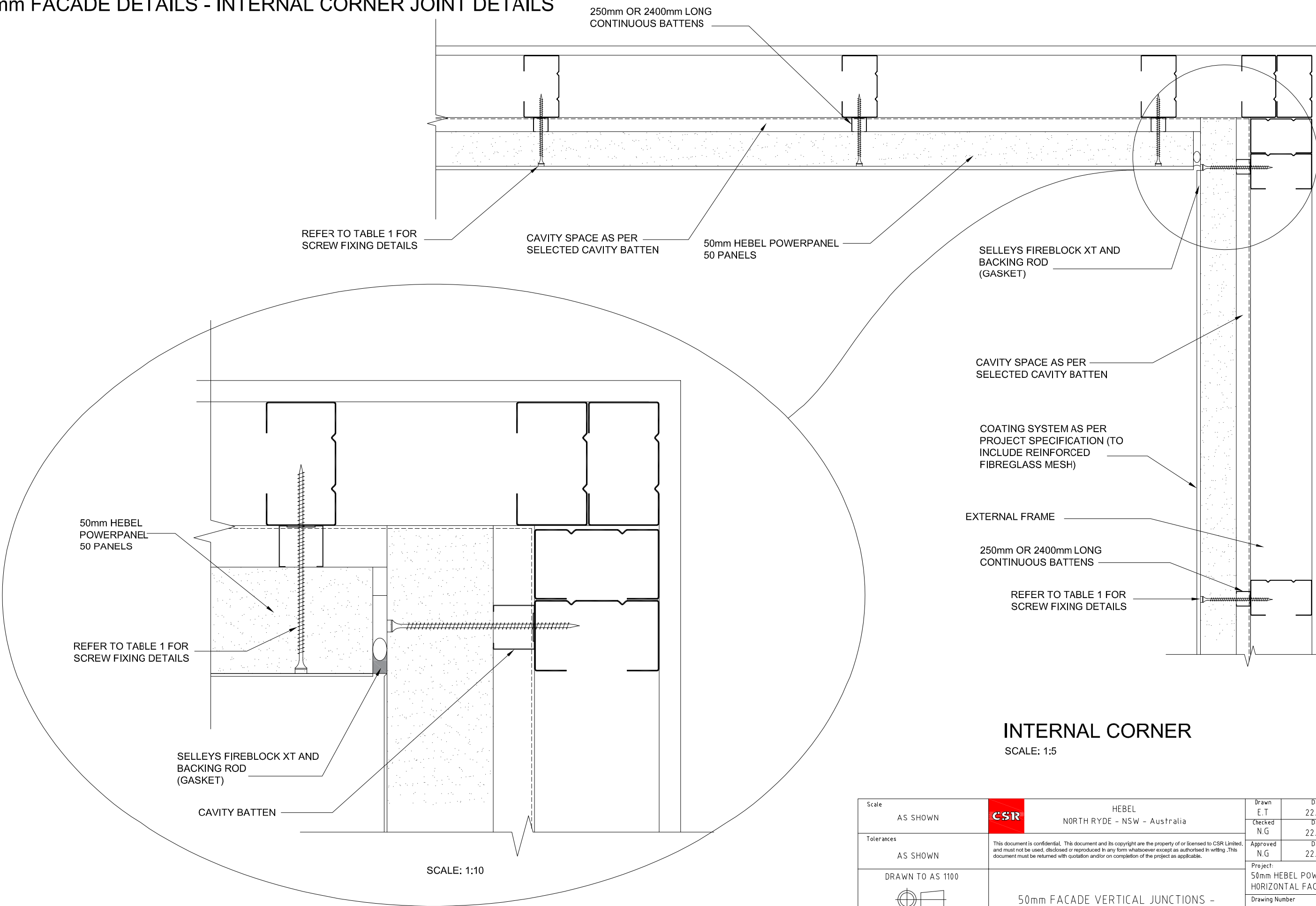
50mm HIGH RISE FACADE DETAILS - EXTERNALCORNER JOINT DETAIL



EXTERNAL CORNER
SCALE: 1:5

| | | | | |
|--|----------|--|--|------------------|
| Scale | AS SHOWN | <div>CSR</div> <div>HEBEL NORTH RYDE - NSW - Australia</div> | Drawn E.T | Date 22.03.21 |
| Tolerances | AS SHOWN | | Checked N.G | Date 22.03.21 |
| | | | Approved N.G | Date 22.03.21 |
| <div>DRAWN TO AS 1100</div> <div></div> <div>DIMENSIONS IN MILLIMETRES DO NOT SCALE</div> | | | Project: 50mm HEBEL POWERPANEL HORIZONTAL FACADE | |
| | | | Drawing Number PP50-H-F-007 | |
| | | | Sheet 7 | Revision E |
| | | | of | |

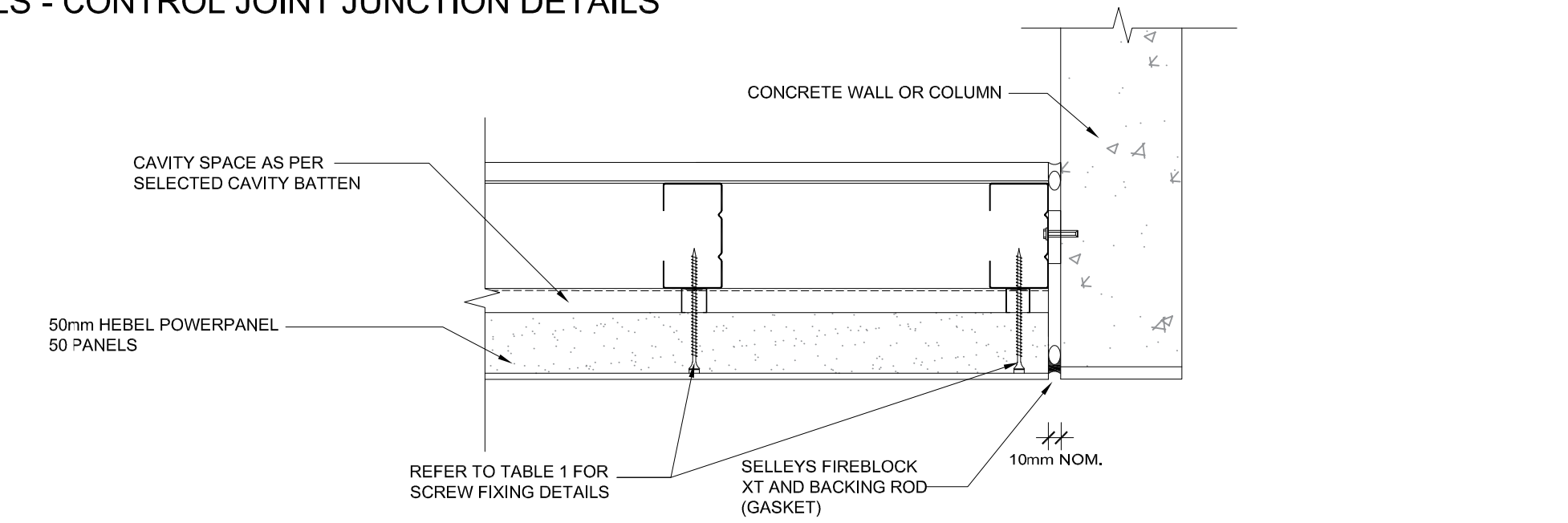
50mm FACADE DETAILS - INTERNAL CORNER JOINT DETAILS



INTERNAL CORNER
SCALE: 1:5

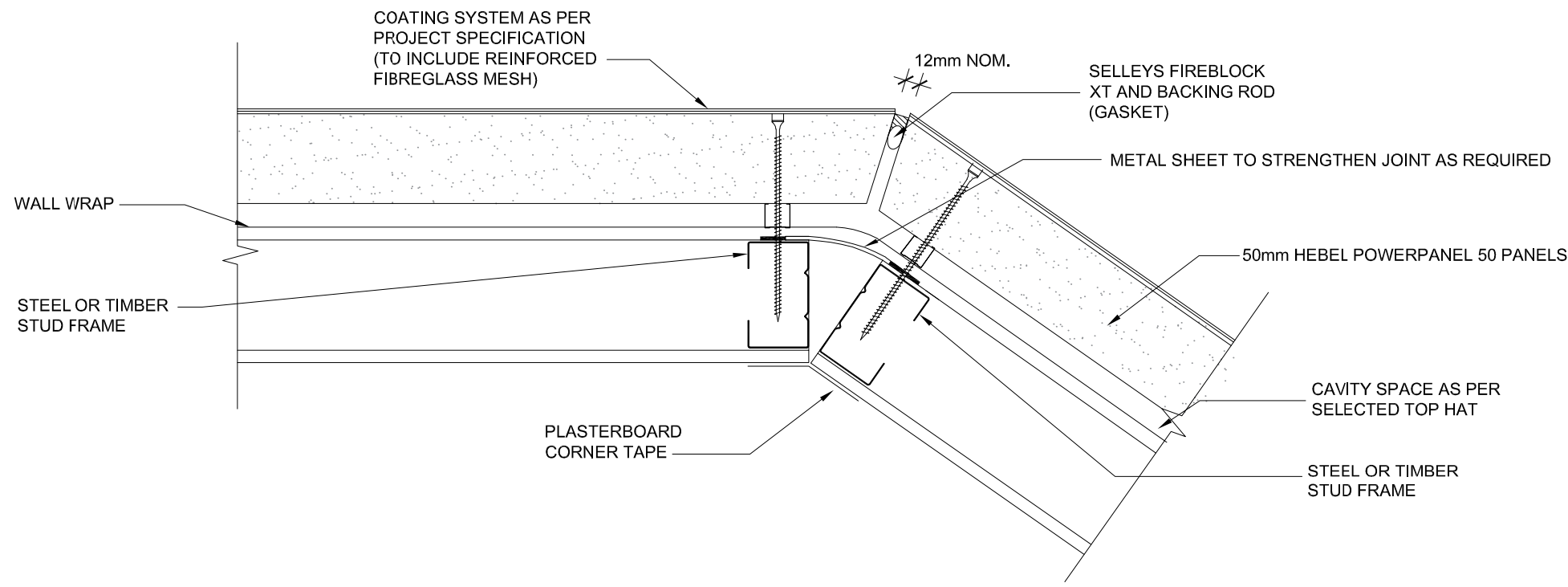
| | | | | |
|---|------------------|--|------------------|------------------|
| Scale | AS SHOWN | <div>HEBEL</div> <div>NORTH RYDE - NSW - Australia</div> <div><small>This document is confidential. This document and its copyright are the property of or licensed to CSR Limited, and must not be used, disclosed or reproduced in any form whatsoever except as authorised in writing. This document must be returned with quotation and/or on completion of the project as applicable.</small></div> | Drawn E.T. | Date 22.03.21 |
| Tolerances | AS SHOWN | | Checked N.G. | Date 22.03.21 |
| | DRAWN TO AS 1100 | | Approved N.G. | Date 22.03.21 |
| <div></div> <div>DIMENSIONS IN MILLIMETRES DO NOT SCALE</div> | | Project: 50mm HEBEL POWERPANEL HORIZONTAL FACADE | | |
| | | Drawing Number PP50-H-F-008 | | |
| | | Sheet 8 | of | Revision E |

50mm HIGH RISE FACADE DETAILS - CONTROL JOINT JUNCTION DETAILS



JUNCTION TO CONCRETE COLUMN/WALL DETAIL

SCALE: 1:5



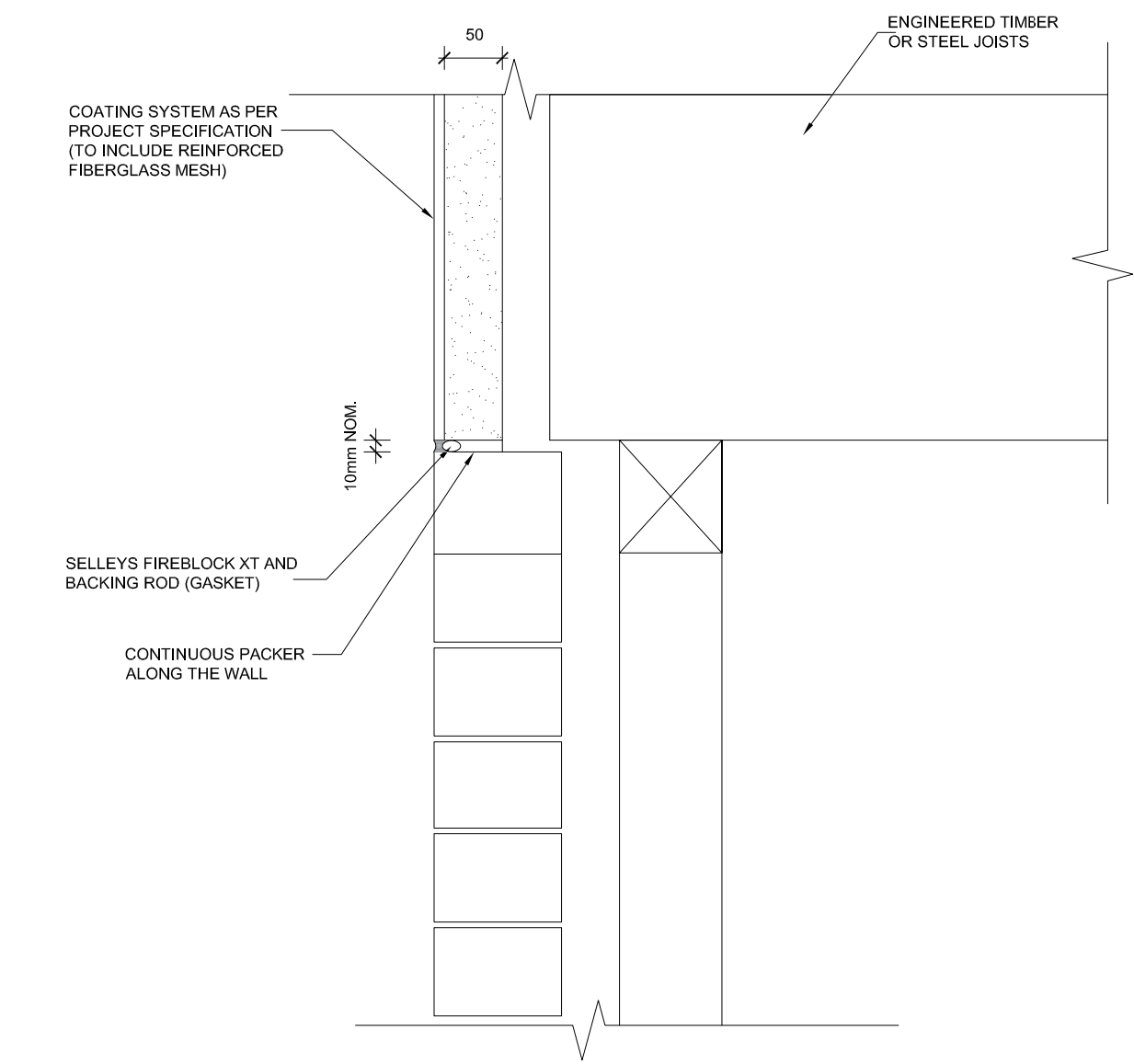
ANGLE CORNER DETAIL

SCALE: 1:5

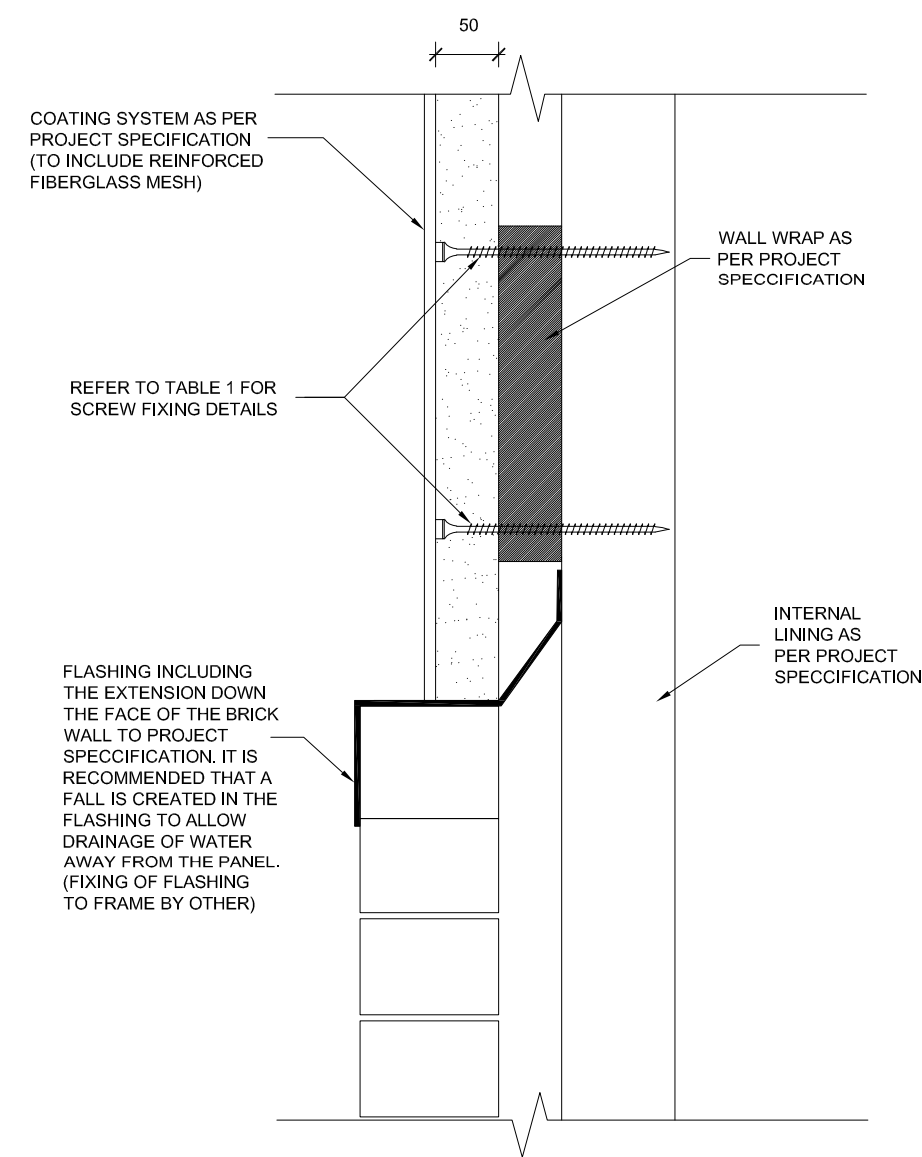
| | | | | |
|------------------|---|--|---|----------|
| Scale | AS SHOWN | <div>HEBEL</div> <div>NORTH RYDE - NSW - Australia</div> | Drawn | Date |
| | | | E.T | 22.03.21 |
| | | | Checked | Date |
| Tolerances | AS SHOWN | <div>This document is confidential. This document and its copyright are the property of or licensed to CSR Limited, and must not be used, disclosed or reproduced in any form whatsoever except as authorised in writing. This document must be returned with quotation and/or on completion of the project as applicable.</div> | N.G | 22.03.21 |
| | | | Approved | Date |
| | | | N.G | 22.03.21 |
| DRAWN TO AS 1100 | <div></div> <div>DIMENSIONS IN MILLIMETRES DO NOT SCALE</div> | 50mm FACADE VERTICAL JUNCTIONS | Project: | |
| | | | 50mm HEBEL POWERPANEL HORIZONTAL FACADE | |
| | | | Drawing Number | |
| | | | PP50-H-F-009 | |
| | | | Sheet | Revision |
| | | | 9 of | E |

50mm HIGH RISE FACADE DETAIL - HORIZONTAL JOINT DETAIL

HORIZONTAL CONTROL JOINT - BRICK VENEER TO HEBEL POWERPANEL⁵⁰ - OPTION 1

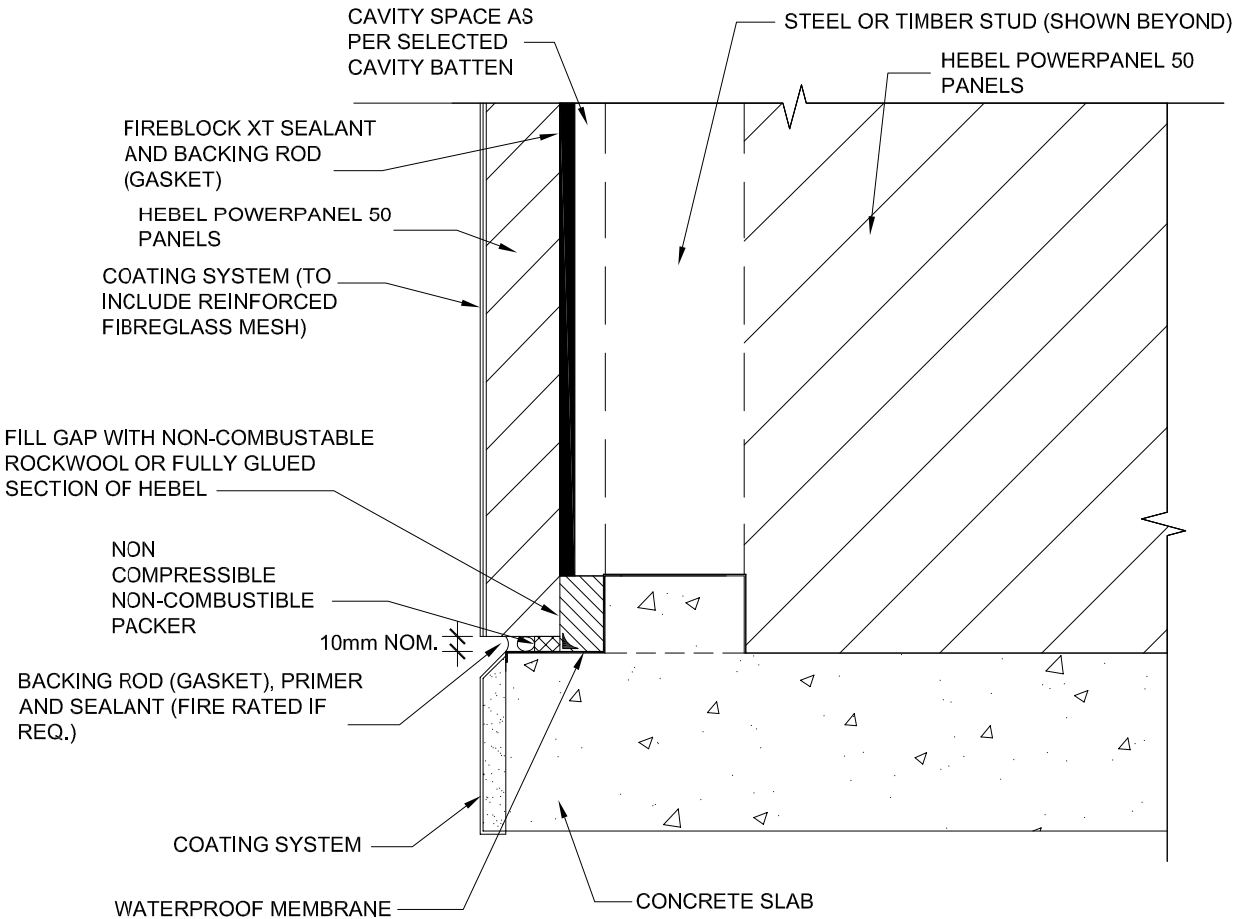


HORIZONTAL CONTROL JOINT - BRICK VENEER TO HEBEL POWERPANEL⁵⁰ - OPTION 2

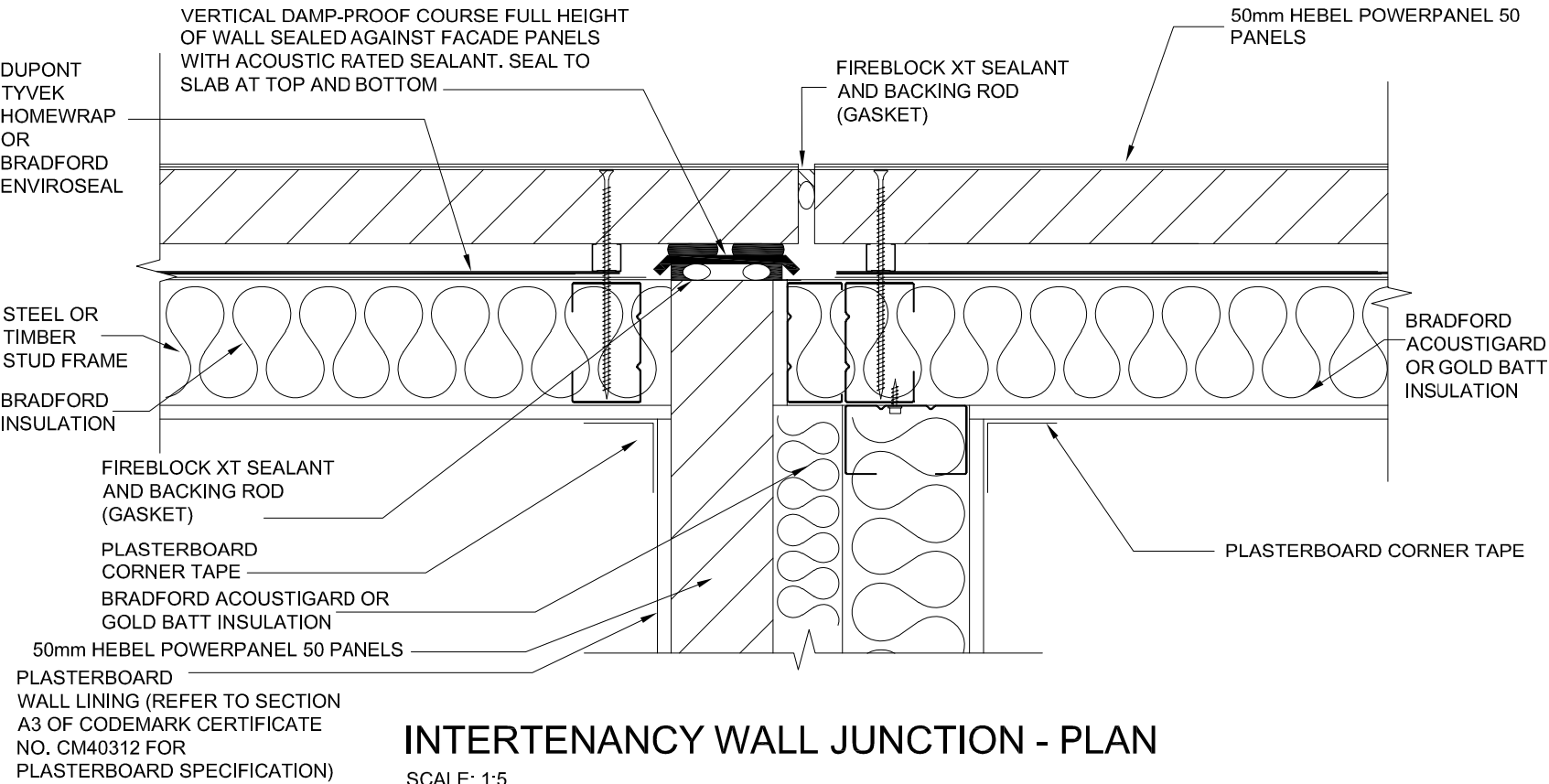


| | | | | |
|------------------|---|---|--|------------------|
| Scale | AS SHOWN | <div>HEBEL NORTH RYDE - NSW - Australia</div> <div><small>This document is confidential. This document and its copyright are the property of or licensed to CSR Limited, and must not be used, disclosed or reproduced in any form whatsoever except as authorised in writing. This document must be returned with quotation and/or on completion of the project as applicable.</small></div> | Drawn E.T. | Date 22.03.21 |
| | | | Checked N.G. | Date 22.03.21 |
| Tolerances | AS SHOWN | | Approved N.G. | Date 22.03.21 |
| DRAWN TO AS 1100 | <div></div> <div>DIMENSIONS IN MILLIMETRES DO NOT SCALE</div> | BRICK VENEER JUNCTIONS | Project: 50mm HEBEL POWERPANEL HORIZONTAL FACADE | |
| | | | Drawing Number PP50-H-F-010 | |
| | | | Sheet 10 of | Revision E |

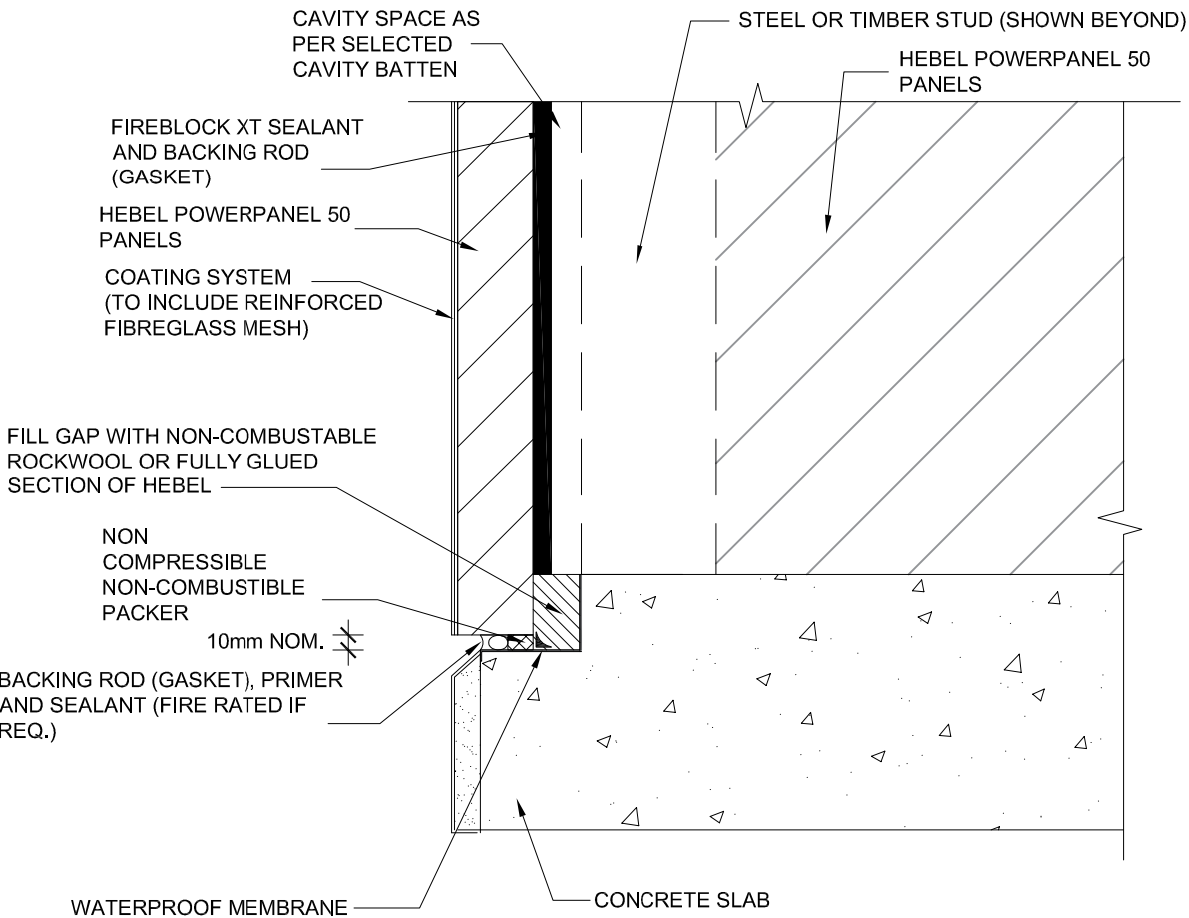
50mm HIGH RISE FACADE DETAILS - INTERTENANCY WALL TO EXTERNAL WALL JUNCTION DETAILS




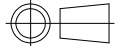
INTERTENANCY WALL JUNCTION - ELEVATION (HOB)
SCALE: 1:5



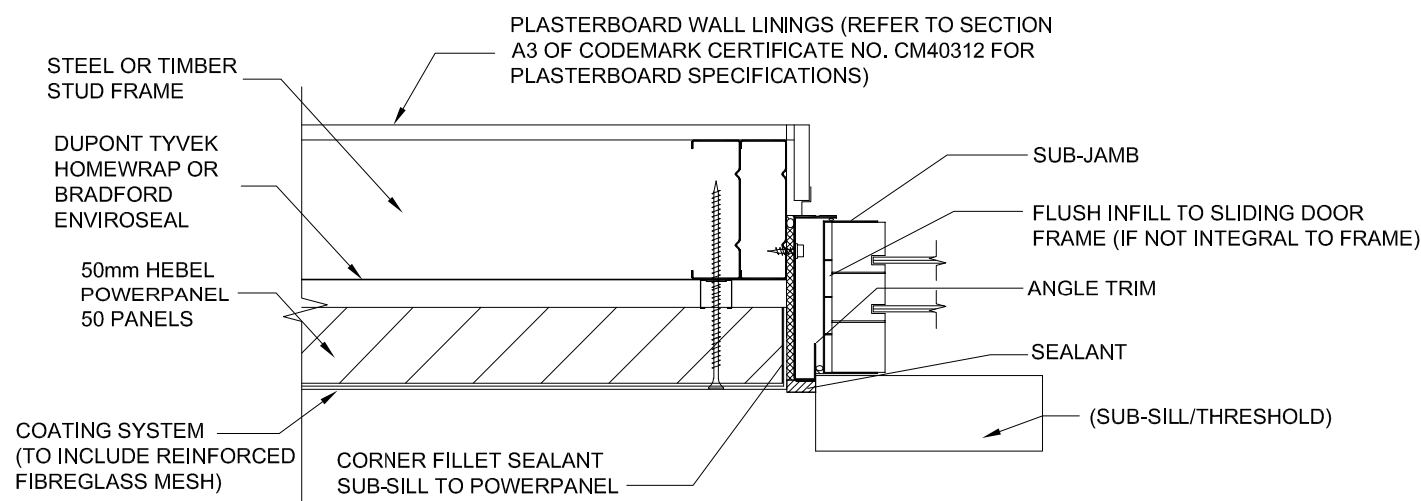
INTERTENANCY WALL JUNCTION - PLAN
SCALE: 1:5



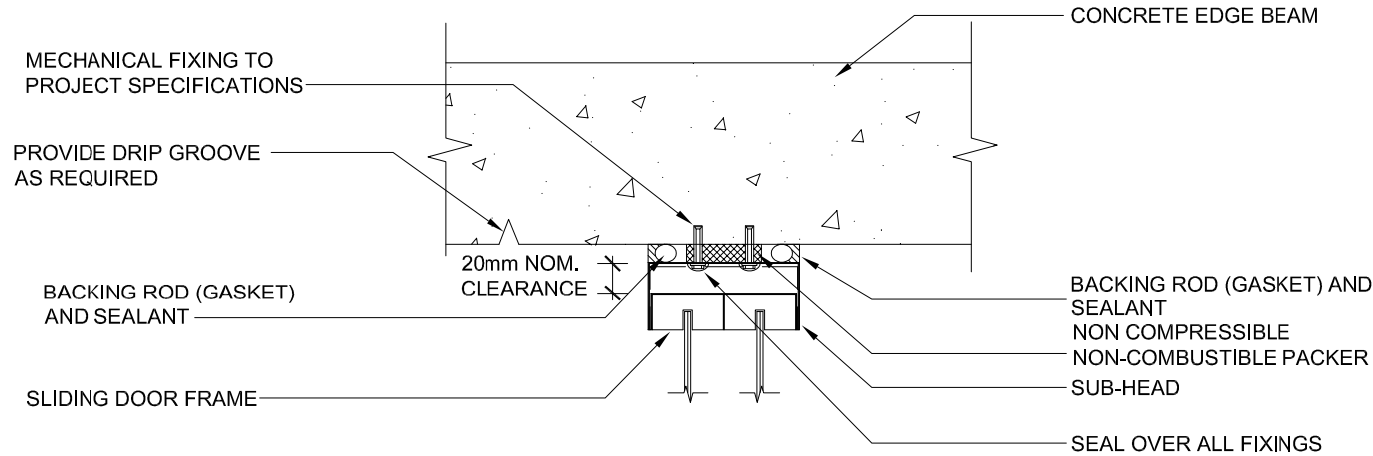
INTERTENANCY WALL JUNCTION - ELEVATION
SCALE: 1:5

| | | | | |
|--|------------------|---|------------------|------------------|
| Scale | AS SHOWN |  <div>HEBEL NORTH RYDE - NSW - Australia</div> | Drawn E.T. | Date 22.03.21 |
| Tolerances | AS SHOWN | | Checked N.G. | Date 22.03.21 |
| | DRAWN TO AS 1100 | | Approved N.G. | Date 22.03.21 |
|  DIMENSIONS IN MILLIMETRES DO NOT SCALE | | Project: 50mm HEBEL POWERPANEL HORIZONTAL FACADE | | |
| | | Drawing Number PP50-H-F-011 | | |
| | | Sheet 11 of | | Revision E |

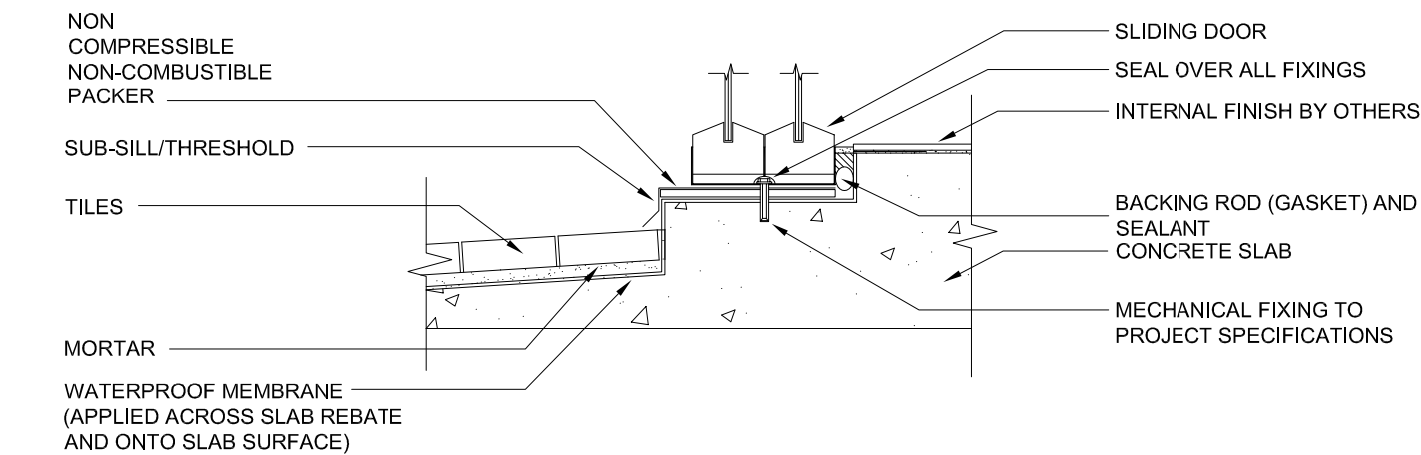
50mm HIGH RISE FACADE DETAILS - SLIDING DOOR JUNCTION



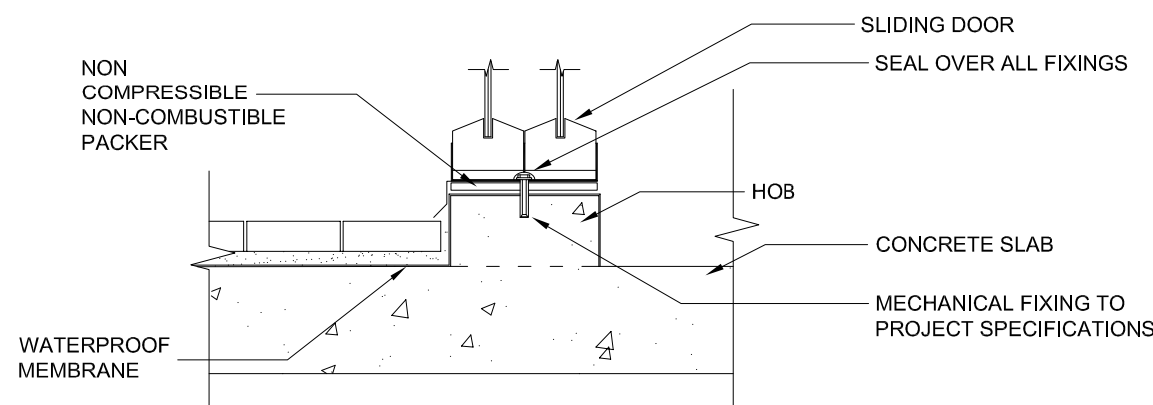
SLIDING DOOR JAMB AT BASE
SCALE: 1:5



SLIDING DOOR HEAD
SCALE: 1:5



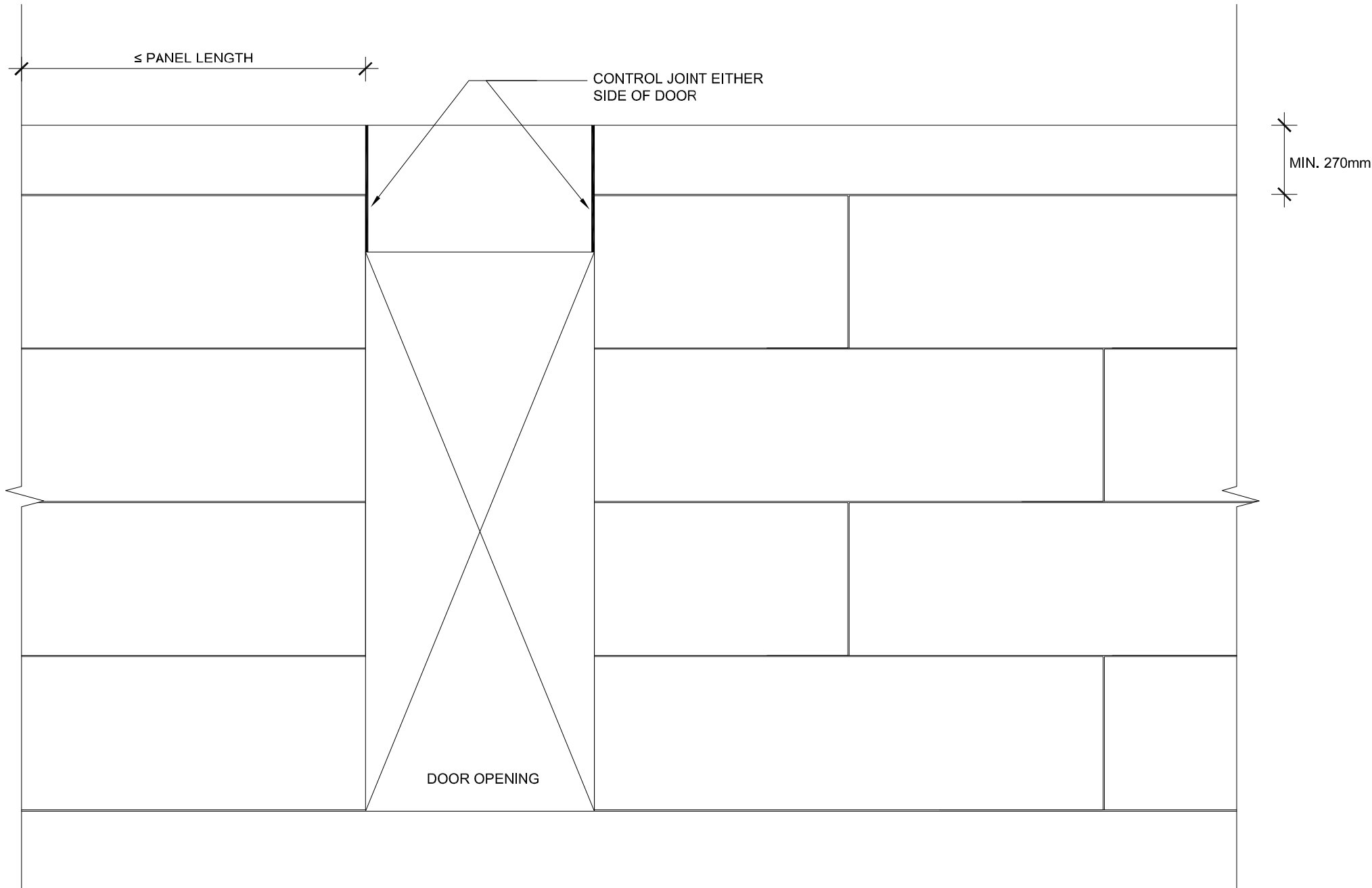
SLIDING DOOR BASE - SIDE ELEVATION
SCALE: 1:5



SLIDING DOOR BASE - SIDE ELEVATION (HOB)
SCALE: 1:5

| | | | | |
|------------|---|---|--|------------------|
| Scale | AS SHOWN | HEBEL NORTH RYDE - NSW - Australia | Drawn E.T. | Date 22.03.21 |
| Tolerances | AS SHOWN | This document is confidential. This document and its copyright are the property of or licensed to CSR Limited, and must not be used, disclosed or reproduced in any form whatsoever except as authorised in writing. This document must be returned with quotation and/or on completion of the project as applicable. | Checked N.G. | Date 22.03.21 |
| | DRAWN TO AS 1100 | | Approved N.G. | Date 22.03.21 |
| |  | | Project: 50mm HEBEL POWERPANEL HORIZONTAL FACADE | |
| | DIMENSIONS IN MILLIMETRES DO NOT SCALE | | Drawing Number PP50-H-F-012 | |
| | | | Sheet 12 of | Revision E |

50mm HIGH RISE FACADE DETAILS - CONTROL JOINT AT DOOR OPENINGS



CONTROL JOINTS AT DOOR OPENINGS

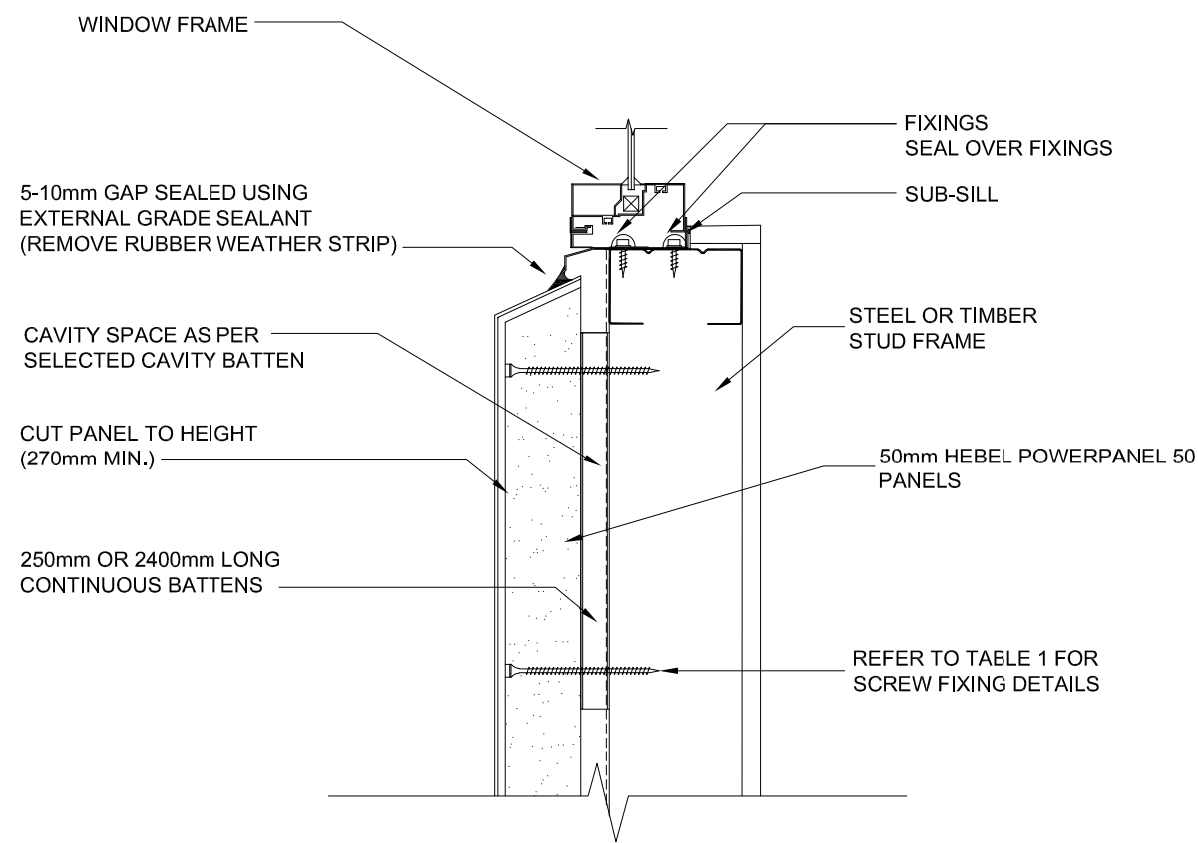
SCALE: 1:20

NOTE:

- 1. VERTICAL CONTROL JOINTS ARE REQUIRED AT MAXIMUM 6m CENTRES.
- 2. VERTICAL CONTROL JOINTS ARE REQUIRED AT ABOVE AND BELOW ALL DOORS.
- 3. VERTICAL CONTROL JOINTS ARE REQUIRED ABOVE AND BELOW WINDOW OPENINGS WHEN CONTROL JOINT SPACING EXCEEDS 6m.
- 4. VERTICAL CONTROL JOINTS ARE REQUIRED AT EXTERNAL AND INTERNAL CORNERS.

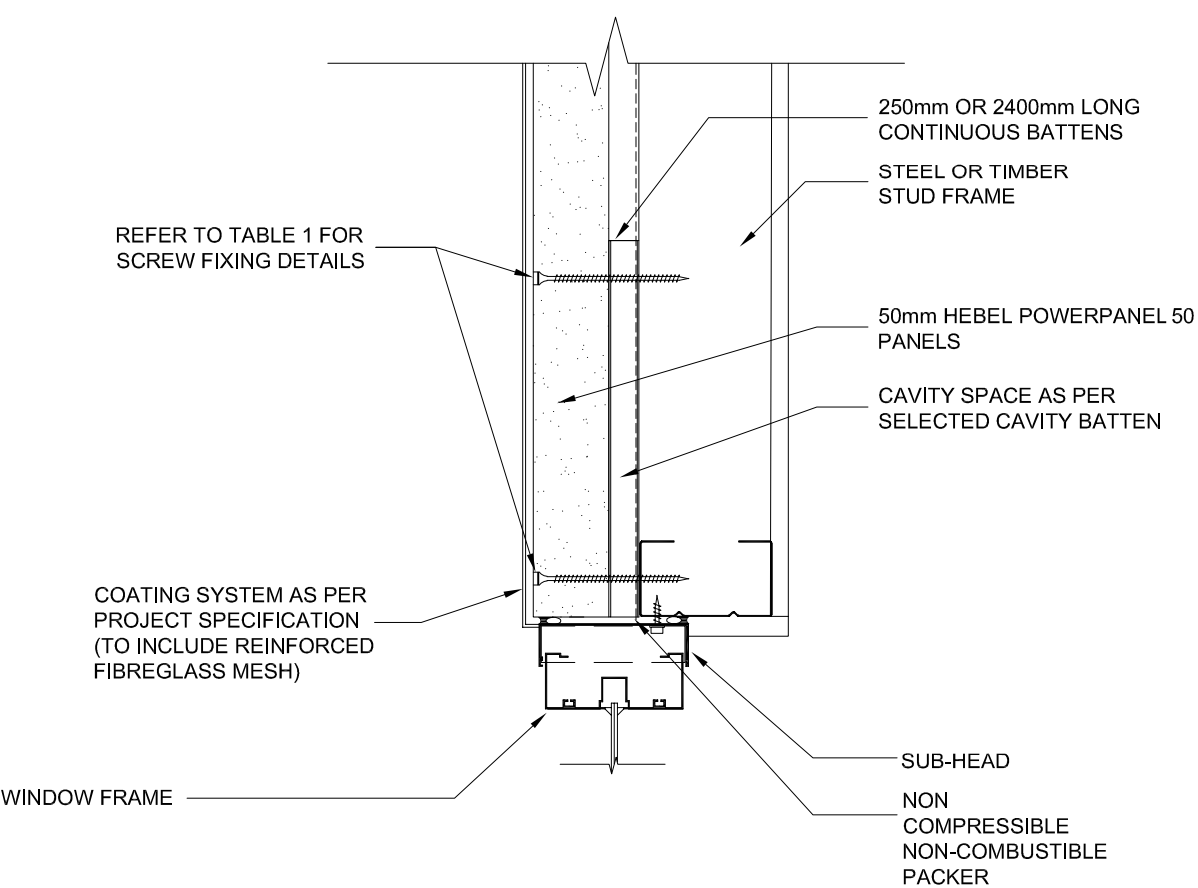
| | | | | |
|---|----------|---|--|------------------|
| Scale | AS SHOWN |  <div>HEBEL NORTH RYDE - NSW - Australia</div> | Drawn H.T | Date 22.03.21 |
| Tolerances | AS SHOWN | | Checked N.G | Date 22.03.21 |
| | | | Approved N.G | Date 22.03.21 |
| DRAWN TO AS 1100 | | 50mm FACADE DOOR OPENING | Project: 50mm HEBEL POWERPANEL HORIZONTAL FACADE | |
|  | | | Drawing Number PP50-H-F-013 | |
| DIMENSIONS IN MILLIMETRES DO NOT SCALE | | | Sheet 13 of | Revision E |

50mm HIGH RISE FACADE DETAILS - WINDOW JUNCTION DETAILS



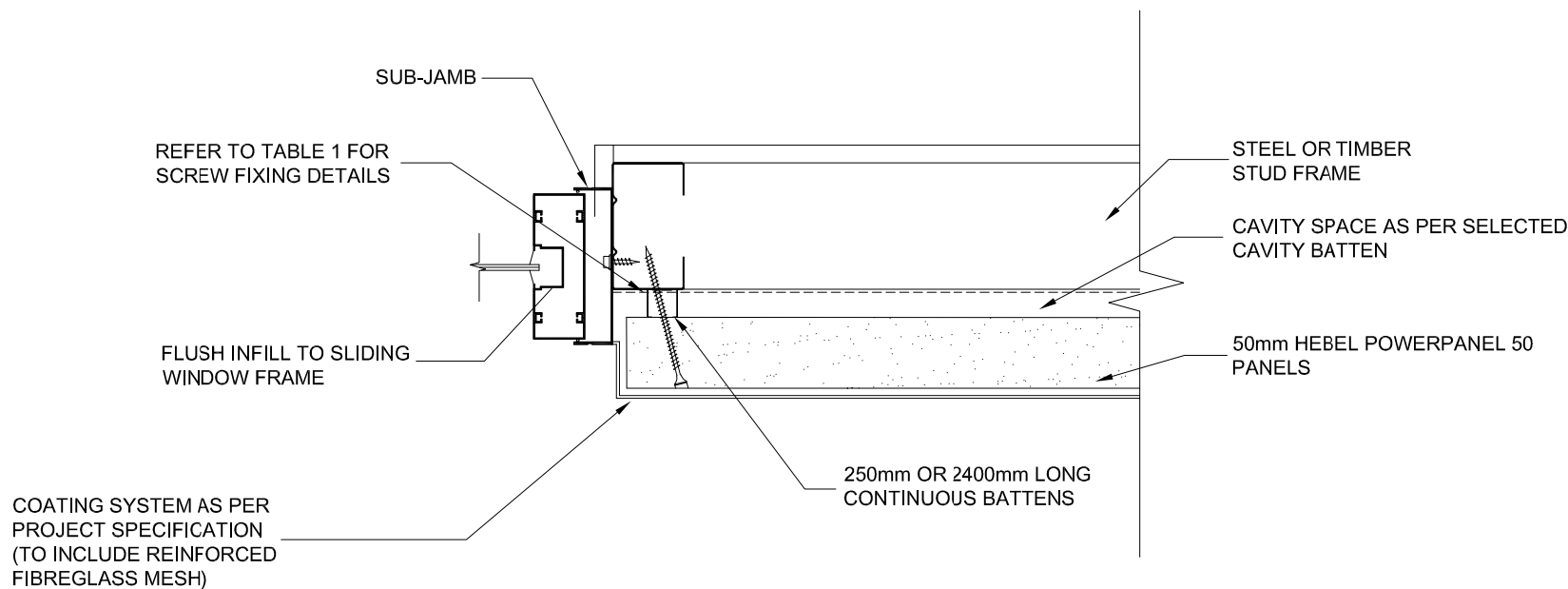
WINDOW SILL - SECTION

SCALE: 1:5



WINDOW HEAD - SECTION


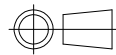
SCALE: 1:5



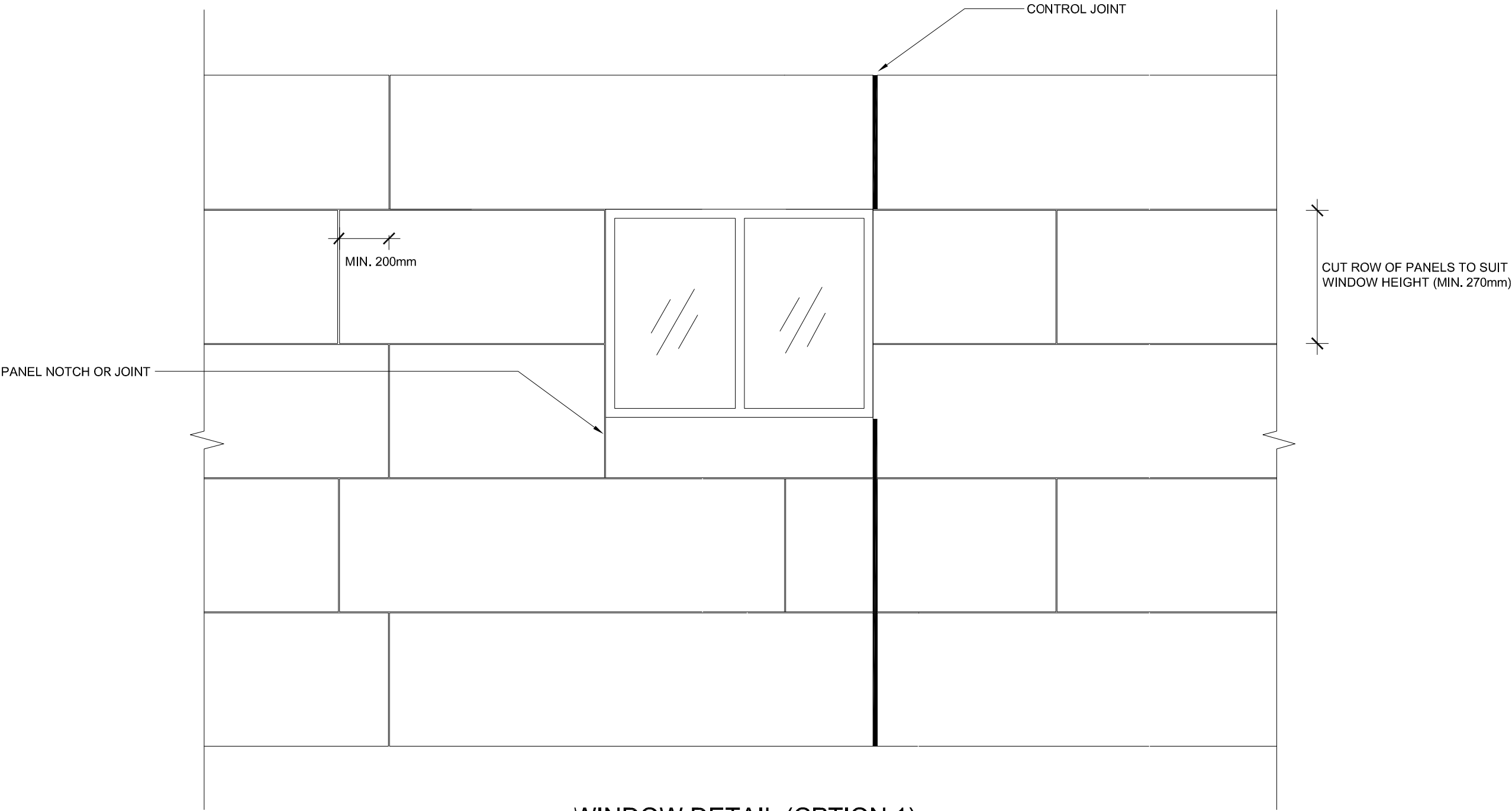
WINDOW JAMB - SECTION

SCALE: 1:5


- NOTE:
1. WALL WRAP MUST BE TAPED BACK TO THE STUD FRAME ALONG OPENING PERIMETER
 2. WINDOWS TO COMPLY WITH AS 2047 : 2014.

| | | | | |
|--|----------|---|--|------------------|
| Scale | AS SHOWN |  <div>HEBEL NORTH RYDE - NSW - Australia</div> | Drawn E.T | Date 22.03.21 |
| Tolerances | AS SHOWN | | Checked N.G | Date 22.03.21 |
| | | | Approved N.G | Date 22.03.21 |
| <div>DRAWN TO AS 1100</div> <div></div> <div>DIMENSIONS IN MILLIMETRES DO NOT SCALE</div> | | | Project: 50mm HEBEL POWERPANEL HORIZONTAL FACADE | |
| | | | Drawing Number PP50-H-F-014 | |
| | | | Sheet 14 | Revision E |
| | | | of | |

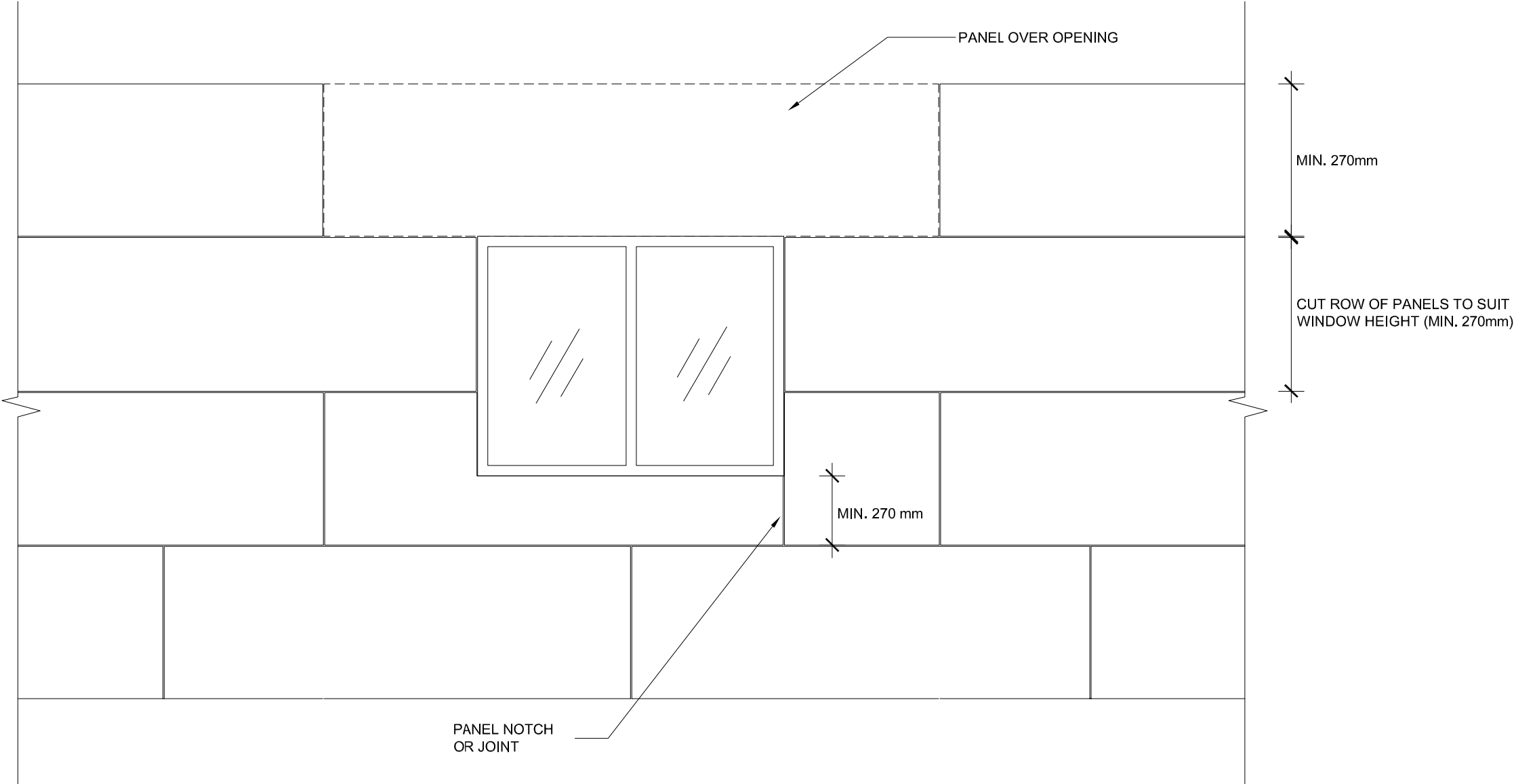
50mm HIGH RISE FACADE DETAILS - WINDOW DETAIL (OPTION 1)



- NOTE:
1. VERTICAL CONTROL JOINTS ARE REQUIRED AT MAXIMUM 6m CENTRES.
 2. VERTICAL CONTROL JOINTS ARE REQUIRED AT ABOVE AND BELOW ALL DOORS.
 3. VERTICAL CONTROL JOINTS ARE REQUIRED ABOVE AND BELOW WINDOW OPENINGS WHEN CONTROL JOINT SPACING EXCEEDS 6m.
 4. VERTICAL CONTROL JOINTS ARE REQUIRED AT EXTERNAL AND INTERNAL CORNERS.
 5. WINDOWS TO COMPLY TO AS 2047 : 2014.


| | | | | |
|--|----------|---|--|------------------|
| Scale | AS SHOWN |  <div>HEBEL NORTH RYDE - NSW - Australia</div> | Drawn H.T | Date 22.03.21 |
| Tolerances | AS SHOWN | | Checked N.G | Date 22.03.21 |
| | | | Approved N.G | Date 22.03.21 |
| <div>DRAWN TO AS 1100</div> <div></div> <div>DIMENSIONS IN MILLIMETRES DO NOT SCALE</div> | | | Project: 50mm HEBEL POWERPANEL HORIZONTAL FACADE | |
| | | | Drawing Number PP50-H-F-015 | |
| | | | Sheet 15 of | |
| | | | Revision E | |

50mm HIGH RISE FACADE DETAILS - WINDOW DETAIL (OPTION 2)

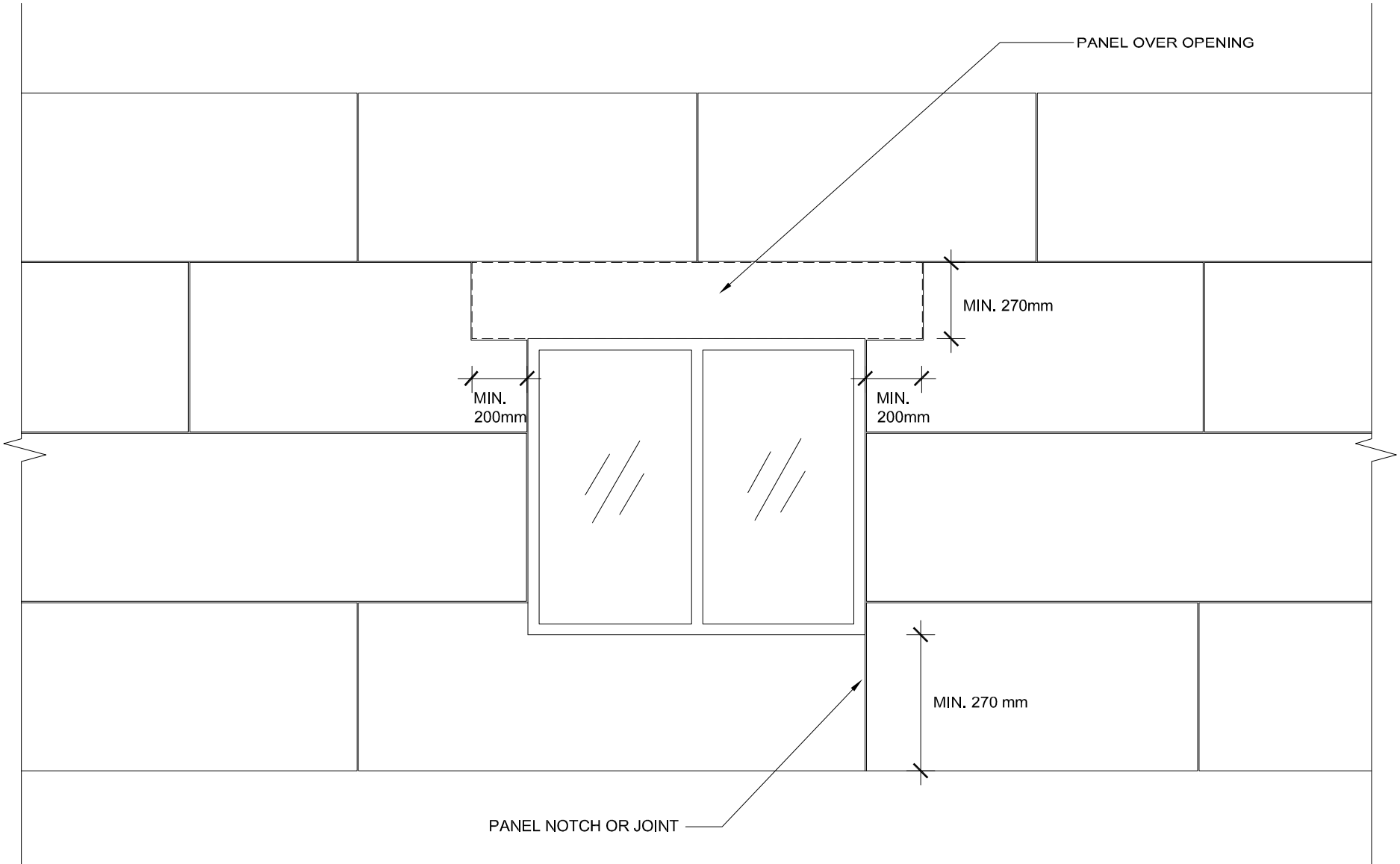


WINDOW DETAIL (OPTION 2)
SCALE: 1:20

- NOTE:
- 1. VERTICAL CONTROL JOINTS ARE REQUIRED AT MAXIMUM 6m CENTRES.
 - 2. VERTICAL CONTROL JOINTS ARE REQUIRED AT ABOVE AND BELOW ALL DOORS.
 - 3. VERTICAL CONTROL JOINTS ARE REQUIRED ABOVE AND BELOW WINDOW OPENINGS WHEN EXCEEDS 6m.
 - 4. VERTICAL CONTROL JOINTS ARE REQUIRED AT EXTERNAL AND INTERNAL CORNERS.
 - 5. WINDOW TO COMPLY TO AS 2047 : 2014.

| | | | | | |
|---|----------|---|--|----------|---|
| Scale | AS SHOWN |  <div>HEBEL NORTH RYDE - NSW - Australia</div> | Drawn | Date | |
| | | | H.T | 22.03.21 | |
| | | | Checked | Date | |
| | | | N.G | 22.03.21 | |
| Tolerances | AS SHOWN | This document is confidential. This document and its copyright are the property of or licensed to CSR Limited, and must not be used, disclosed or reproduced in any form whatsoever except as authorised in writing .This document must be returned with quotation and/or on completion of the project as applicable. | Approved | Date | |
| | | | N.G | 22.03.21 | |
| | | | | | |
| DRAWN TO AS 1100 | | | Project: | | |
|  | | | 50mm HEBEL POWERPANEL HORIZONTAL FACADE | | |
| DIMENSIONS IN MILLIMETRES DO NOT SCALE | | | Drawing Number PP50-H-F-016 | | |
| | | | Sheet | Revision | |
| | | | 16 | of | E |

50mm HIGH RISE FACADE DETAILS - WINDOW DETAIL (OPTION 3)



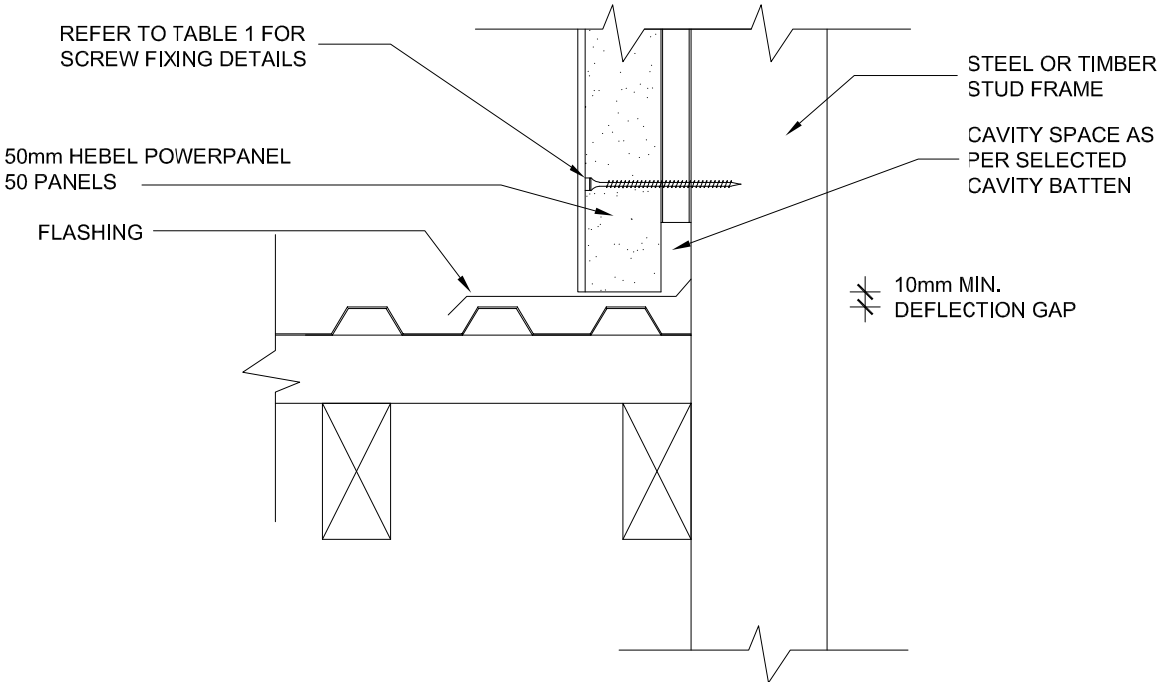
WINDOW DETAIL (OPTION 3)

SCALE: 1:20

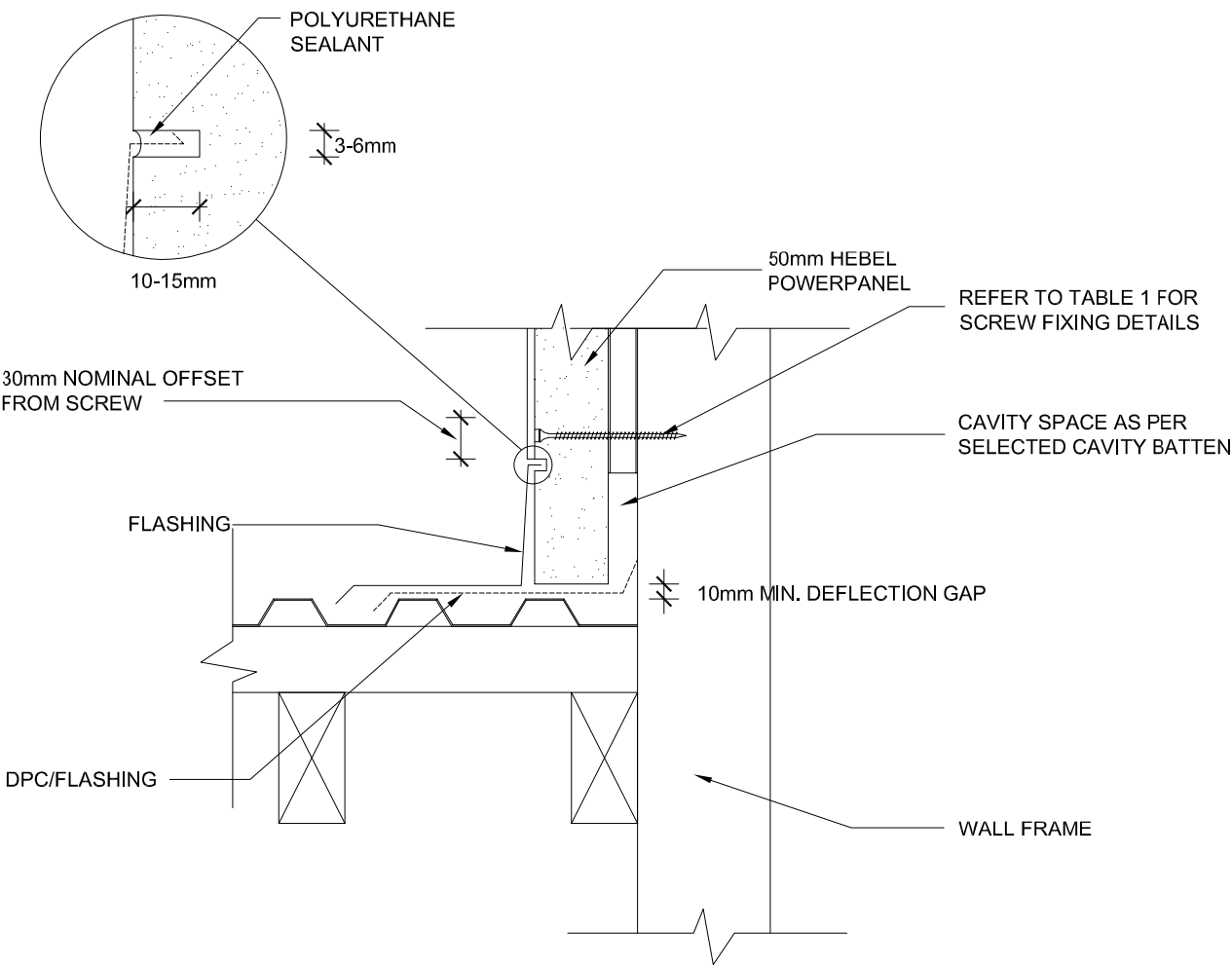
- NOTE:
- 1. VERTICAL CONTROL JOINTS ARE REQUIRED AT MAXIMUM 6m CENTRES.
 - 2. VERTICAL CONTROL JOINTS ARE REQUIRED AT ABOVE AND BELOW ALL DOORS.
 - 3. VERTICAL CONTROL JOINTS ARE REQUIRED ABOVE AND BELOW WINDOW OPENINGS WHEN EXCEEDS 6m.
 - 4. VERTICAL CONTROL JOINTS ARE REQUIRED AT EXTERNAL AND INTERNAL CORNERS.
 - 5. WINDOWS TO COMPLY TO AS 2047 : 2014.

| | | | | | |
|------------|---|---|--|----------|---|
| Scale | AS SHOWN |  <div>HEBEL NORTH RYDE - NSW - Australia</div> | Drawn | Date | |
| | | | H.T | 22.03.21 | |
| | | | Checked | Date | |
| | | | N.G | 22.03.21 | |
| Tolerances | | This document is confidential. This document and its copyright are the property of or licensed to CSR Limited, and must not be used, disclosed or reproduced in any form whatsoever except as authorised in writing. This document must be returned with quotation and/or on completion of the project as applicable. | Approved | Date | |
| | | | N.G | 22.03.21 | |
| | | | | | |
| | DRAWN TO AS 1100 | 50mm FACADE WINDOW OPENING - 3 | Project: | | |
| |  | | 50mm HEBEL POWERPANEL HORIZONTAL FACADE | | |
| | | | Drawing Number | | |
| | | | PP50-H-F-017 | | |
| | | | Sheet | Revision | |
| | DIMENSIONS IN MILLIMETRES DO NOT SCALE | | 17 | of | E |


50mm HIGH RISE FACADE DETAILS - WALL TO ROOF JUNCTIONS



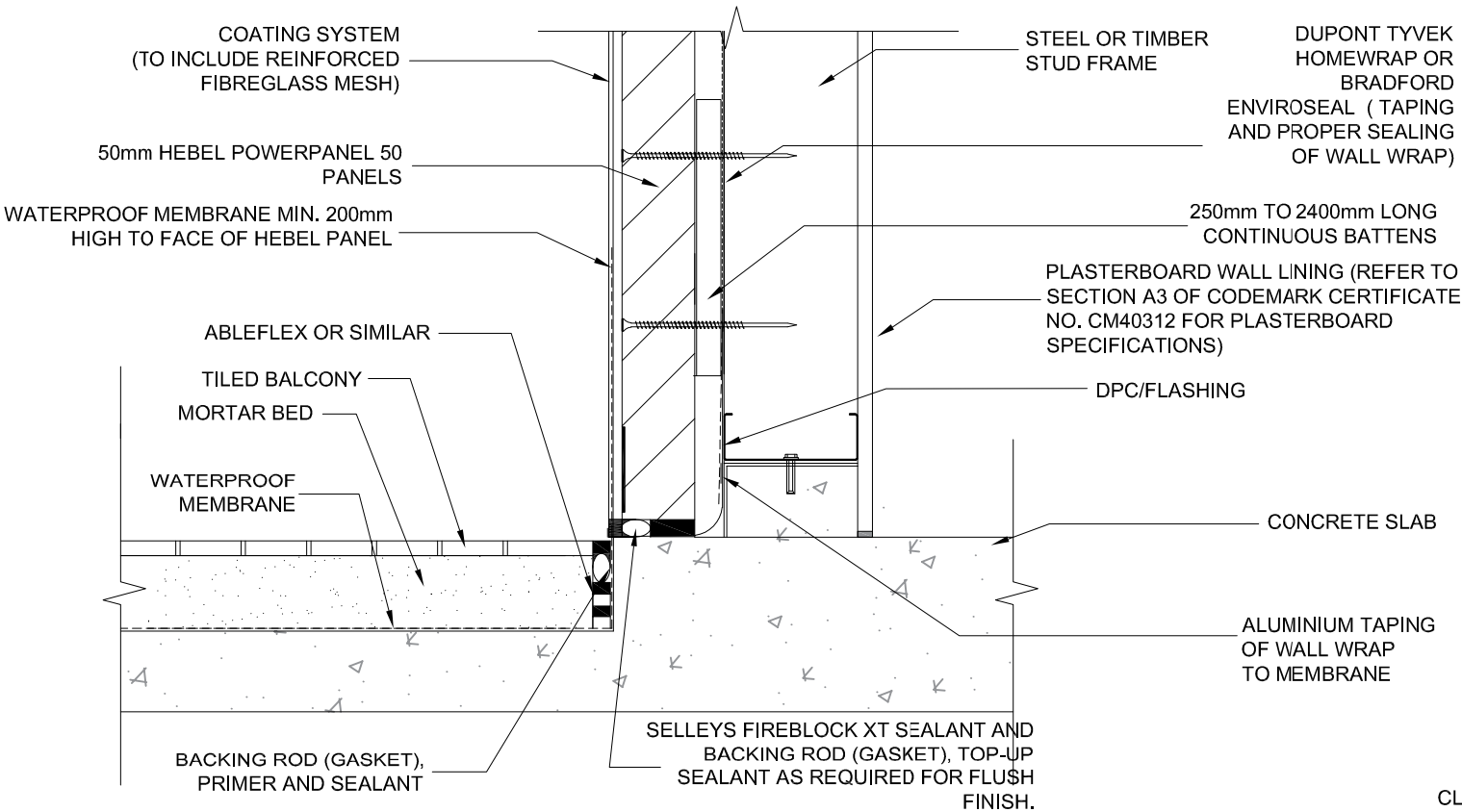
ROOF TO WALL JUNCTION DETAIL - OPTION 1
SCALE 1:5



ROOF TO WALL JUNCTION DETAIL - OPTION 2
SCALE 1:5

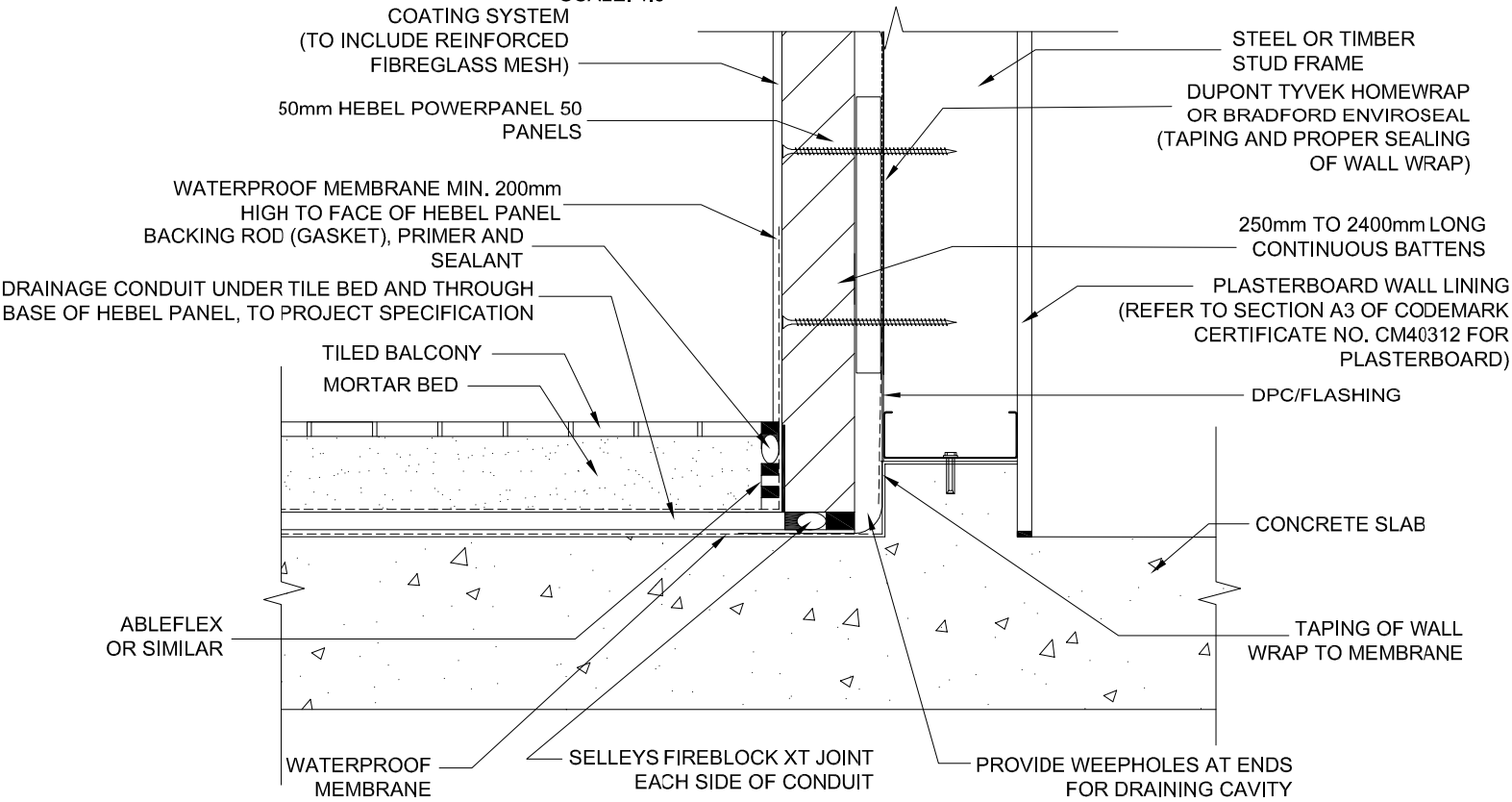
| | | | | |
|--|----------|--|--|------------------|
| Scale | AS SHOWN | <div>CSR</div> <div>HEBEL NORTH RYDE - NSW - Australia</div> | Drawn E.T | Date 22.03.21 |
| Tolerances | AS SHOWN | | Checked N.G | Date 22.03.21 |
| | | | Approved N.G | Date 22.03.21 |
| <div>DRAWN TO AS 1100</div> <div></div> <div>DIMENSIONS IN MILLIMETRES DO NOT SCALE</div> | | | Project: 50mm HEBEL POWERPANEL HORIZONTAL FACADE | |
| | | | Drawing Number PP50-H-F-018 | |
| | | | Sheet 18 | Revision E |
| | | | of | |

50mm HIGH RISE FACADE DETAILS - PARAPET CAPPING AND BALCONY DETAILS



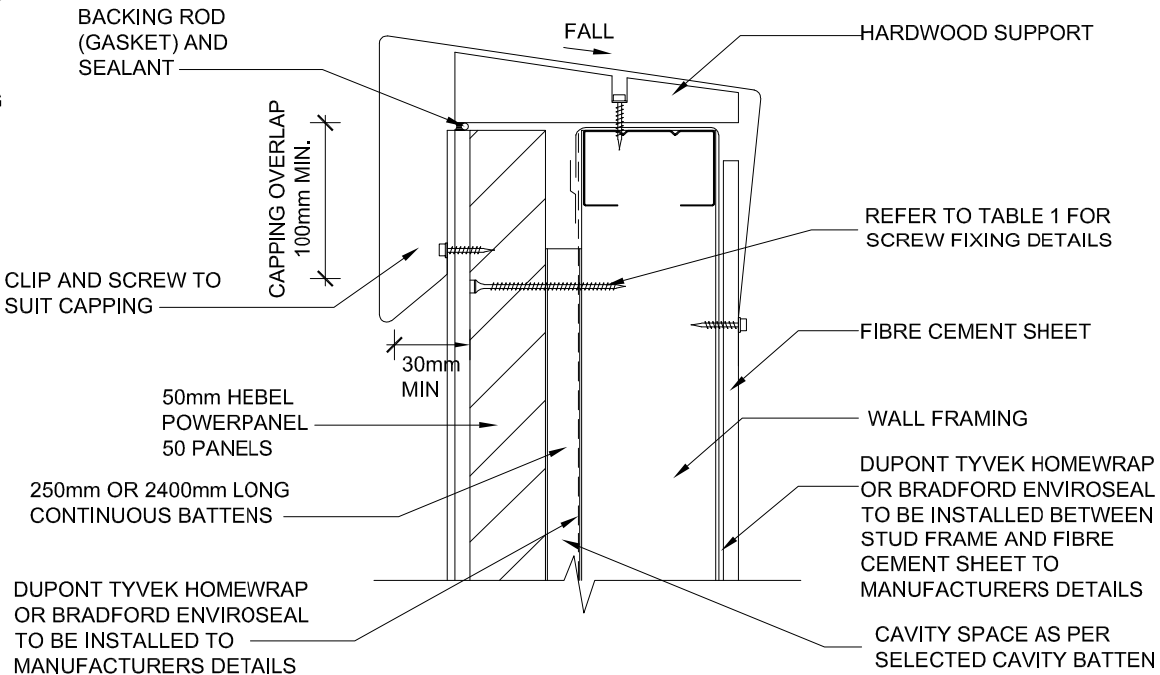
BALCONY DETAIL - OPTION 1

SCALE: 1:5



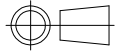
BALCONY DETAIL - OPTION 2

SCALE: 1:5



PARAPET CAPPING

SCALE 1:5

| | | | | |
|------------|---|---|---|------------------|
| Scale | AS SHOWN | HEBEL NORTH RYDE - NSW - Australia | Drawn E.T. | Date 22.03.21 |
| Tolerances | AS SHOWN | This document is confidential. This document and its copyright are the property of or licensed to CSR Limited, and must not be used, disclosed or reproduced in any form whatsoever except as authorised in writing. This document must be returned with quotation and/or on completion of the project as applicable. | Checked N.G. | Date 22.03.21 |
| | DRAWN TO AS 1100 | | Approved N.G. | Date 22.03.21 |
| |  | 50mm FACADE PARAPET CAPPING AND BALCONY DETAILS | Project: 50mm HEBEL POWERPANEL HORIZONTAL FACADE | |
| | DIMENSIONS IN MILLIMETRES DO NOT SCALE | | Drawing Number PP50-H-F-019 | |
| | | | Sheet 19 of | Revision E |