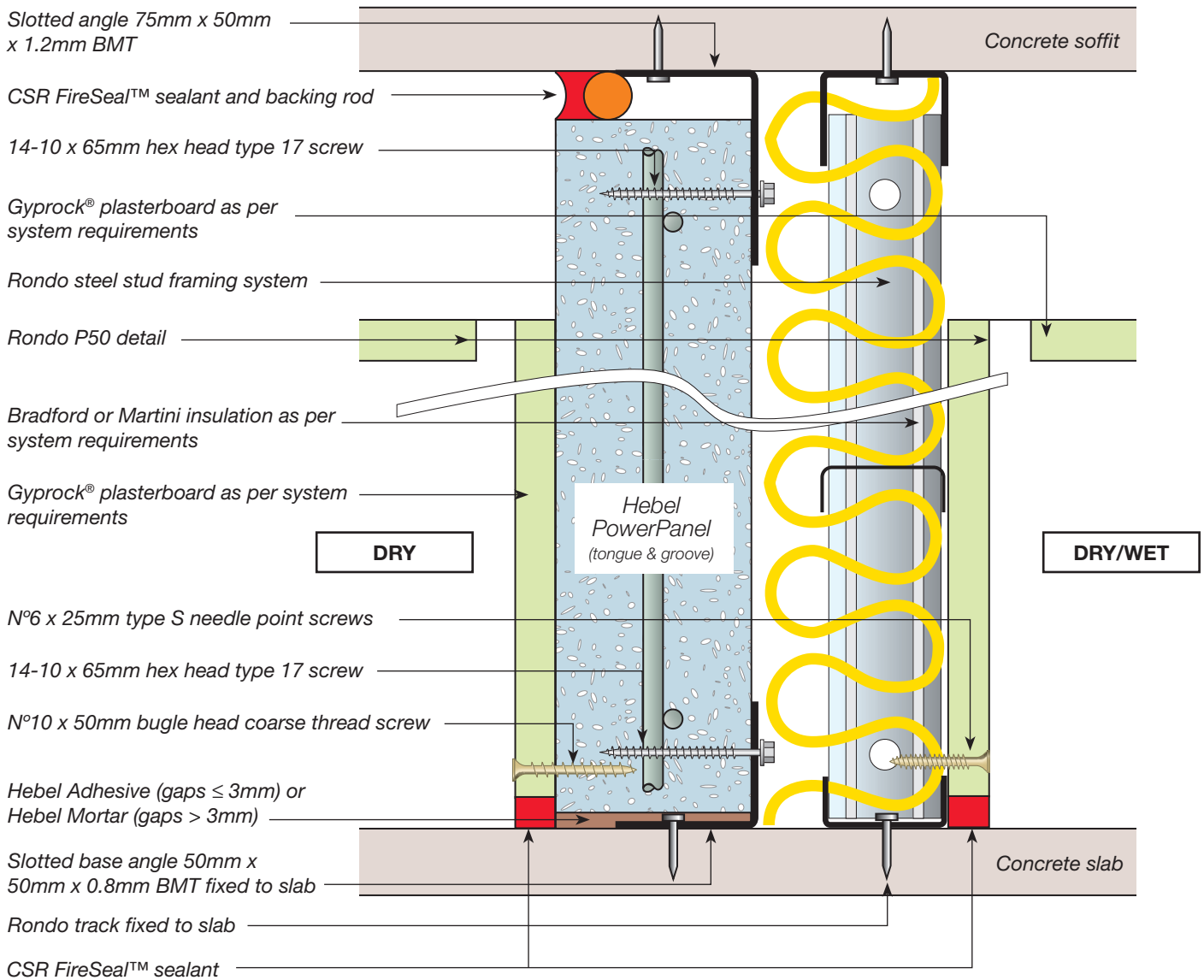




# INTERTENANCY WALL

concealed water services one side



| System   | Application | FRL <sup>(A)</sup>                  | Wall linings <sup>(D)</sup>   | Cavity width (mm) | Insulation  | Acoustic rating Rw+Ctr <sup>(C)</sup> | Wall width (mm) |
|----------|-------------|-------------------------------------|---|-------------------|---|---------------------------------------|-----------------|
| HEB 1072 | Dry to Dry  | -/90/90 for wall heights up to 3.3m | Both Sides<br>13mm Gyprock CD   | 20                | 75mm Bradford Acoustigard 11 or<br>75mm Martini Prime | 50                                    | 185             |
| HEB 1073 | Dry to Wet  |                                     | Hebel Side – 13mm Gyprock CD<br>Stud Side – 13mm Aquacheck <sup>(B)</sup> |                   |   | 50                                    | 185             |

**NOTES:**

- (A) For wall heights higher than 3.3m, caged tongue & groove PowerPanel can be used and will achieve a FRL of -/120/120 for wall heights up to 4.65m (vertically). Also see Construction details section.
- (B) 13mm Aquacheck can be replaced by 9mm FC Sheeting and achieve the same Acoustic & Fire Rating Levels.
- (C) Rw+Ctr values are based on acoustic opinion 20140366.9/1606A/R8/GW provided by Acoustic Logic Consultancy Pty Ltd.
- (D) The minimum mass of plasterboard must be 8.5kg/m<sup>2</sup>.

**GENERAL NOTES:**

- 1. Intertency wall systems HEB 1072-1073 meet NCC 2016 deemed-to-satisfy discontinuous construction requirements.
- 2. HEB 1072-1073 are designed to resist a maximum ultimate lateral pressure of 0.50kPa. Contact Hebel Technical Services if lateral pressures exceed 0.50kPa.



For more information or to speak to a Hebel representative call:

**1300 369 448** or [www.hebel.com.au](http://www.hebel.com.au)

