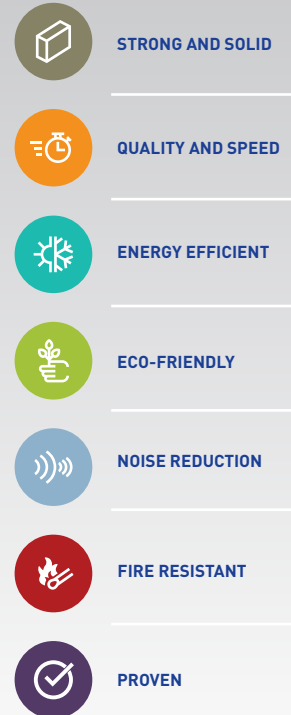
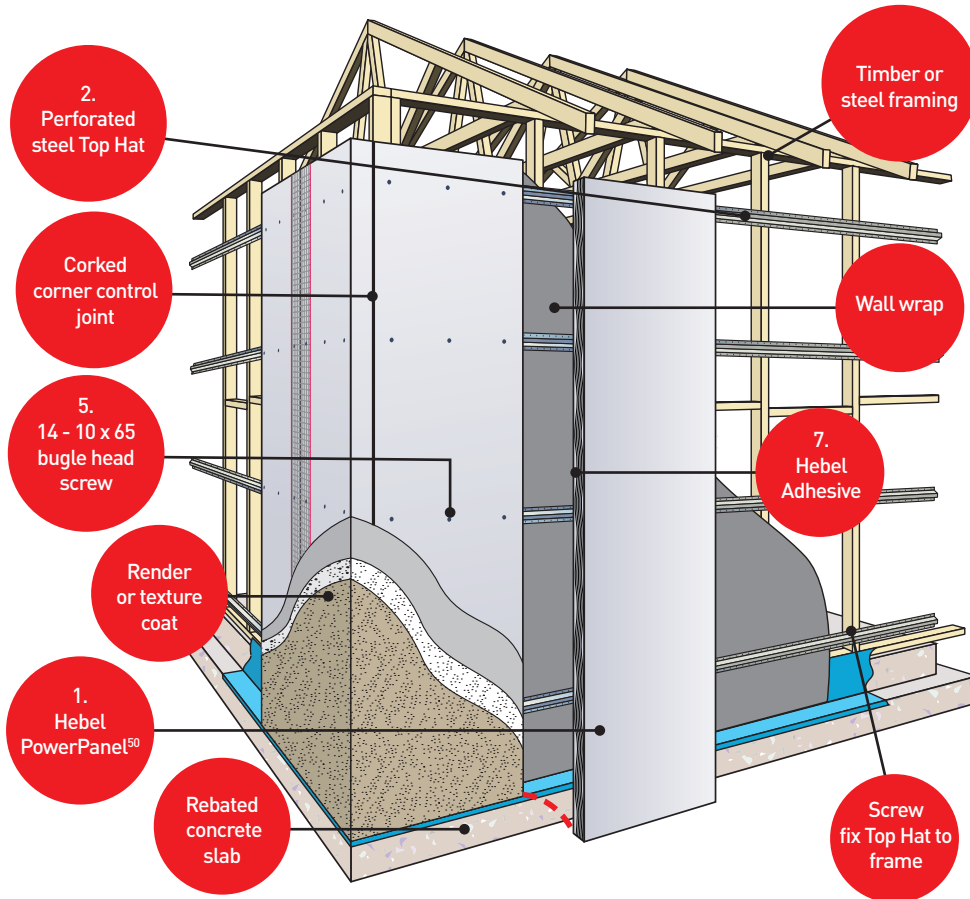


HEBEL POWERPANEL⁵⁰

FOR FAST SOLID WALLS WITH A RENDERED FINISH
50MM EXTERNAL WALL SYSTEMS SIMPLE AND EASY TO INSTALL.



Hebel PowerPanel⁵⁰ has been developed and tested for houses and low rise multi-residential wall systems, which are warranted by CSR.



POWERPANEL⁵⁰ EXTERNAL WALL SYSTEM

The PowerPanel⁵⁰ system consists of 50mm thick, steel-reinforced AAC panels, vertically secured to the structural frame via horizontal perforated top hat sections. The wall is then rendered with a recommended coating system – providing a faster way of constructing external facades for residential builds.

- **Fire rating:** Up to 90/90/90 min from panel side only when subjected to external fire source
- **Acoustic:** $R_w = 35\text{dB}$, $R_w + C_{tr} 31\text{dB}$ for panel only
- **Thermal:** $0.313 \text{ m}^2\text{K/W}$ for 4% M.C for panel ONLY. The external wall system may achieve R-value up to $3.72 \text{ m}^2 \text{K/W}$ in wall system
- **Common Wall Thickness:** 139mm to 187mm. With variations in stud thickness and top hats, wall widths can vary.

POWERPANEL⁵⁰ STANDARD PANEL SIZES

50mm thick x 600mm wide x 2400mm, 2550mm, 2700mm, 2850mm and 3000mm long.

50MM EXTERNAL WALLS - HOUSES & LOW RISE MULTI RESIDENTIAL

- Strong, solid external walls, finished with a flexible coating system
- Good thermal performance, helping to keep the house cooler in summer and warmer in winter
- Good acoustic performance – keeping external noises to a minimum
- Fast to construct without compromising on quality – one standard Hebel panel is the equivalent of 75 traditional bricks, which means an average sized house can go up as quickly as 3 days when installed by experienced Hebel installers
- Non-combustible, suitable for build in bushfire zones

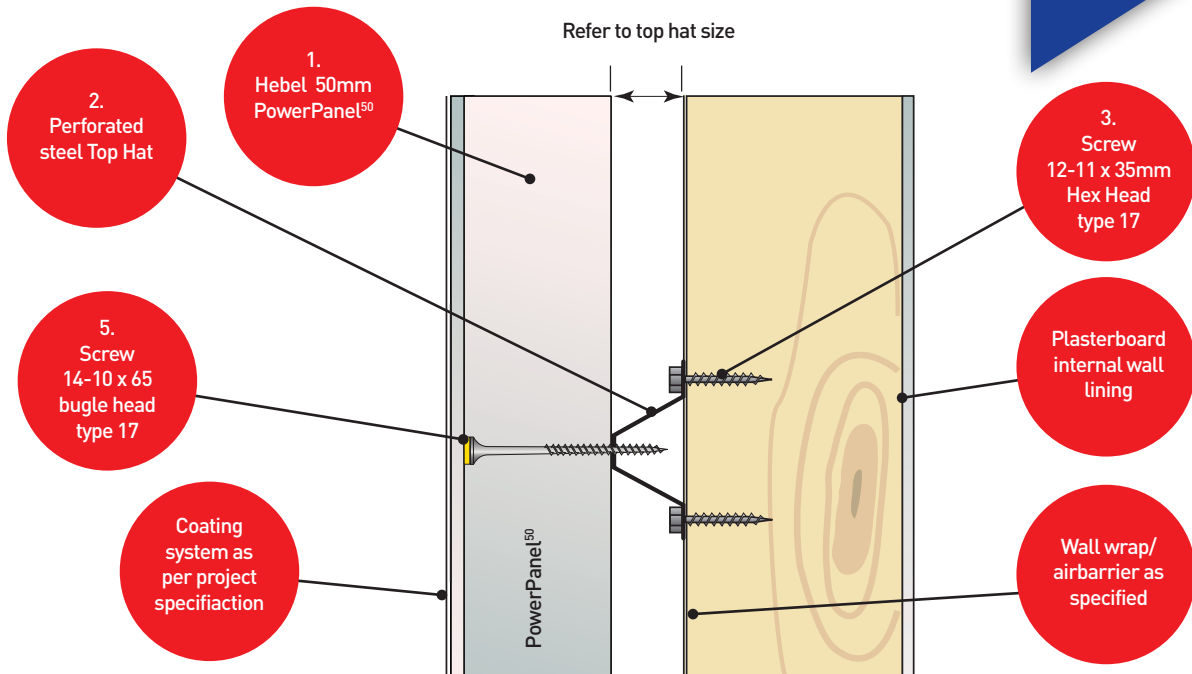


www.hebel.com.au

CSR

HEBEL POWERPANEL⁵⁰

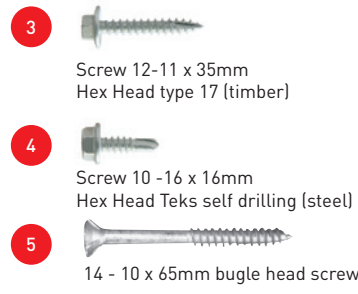
FOR FAST SOLID WALLS WITH A RENDERED FINISH
50MM EXTERNAL WALL SYSTEMS SIMPLE AND EASY TO INSTALL.



ITEM	DESCRIPTION	LOCATION
1	Hebel 50mm PowerPanel ⁵⁰	Entire wall
2	Perforated Top Hat 24mm x 4.8m x 0.42mm BMT or 35mm x 4.8mm x 0.42mm BMT	Attaching PowerPanel ^{XL} to frame
3	Screws to fix Top Hat to timber stud Screw 12-11 x 35mm Hex Head type 17	Fix Top Hat to timber frame
4	Screws to fix Top Hat to steel stud Screw 10-16 x 16mm Hex Head Teks, self drilling	Fix Top Hat to steel frame
5	Screws to fix PowerPanel ⁵⁰ to Top Hat Screw 14-10 x 65mm Bugle Head type 17	Fix PowerPanel ⁵⁰ to Top Hat
6	Hebel Anti-Corrosion Paint 500ml	Used on exposed reo
7	Hebel Adhesive 20kg bag	Used on all panel joints (except control joints)



2400mm
2550mm
2700mm
2850mm
3000mm



For more information contact 1300 369 448 www.hebel.com.au

