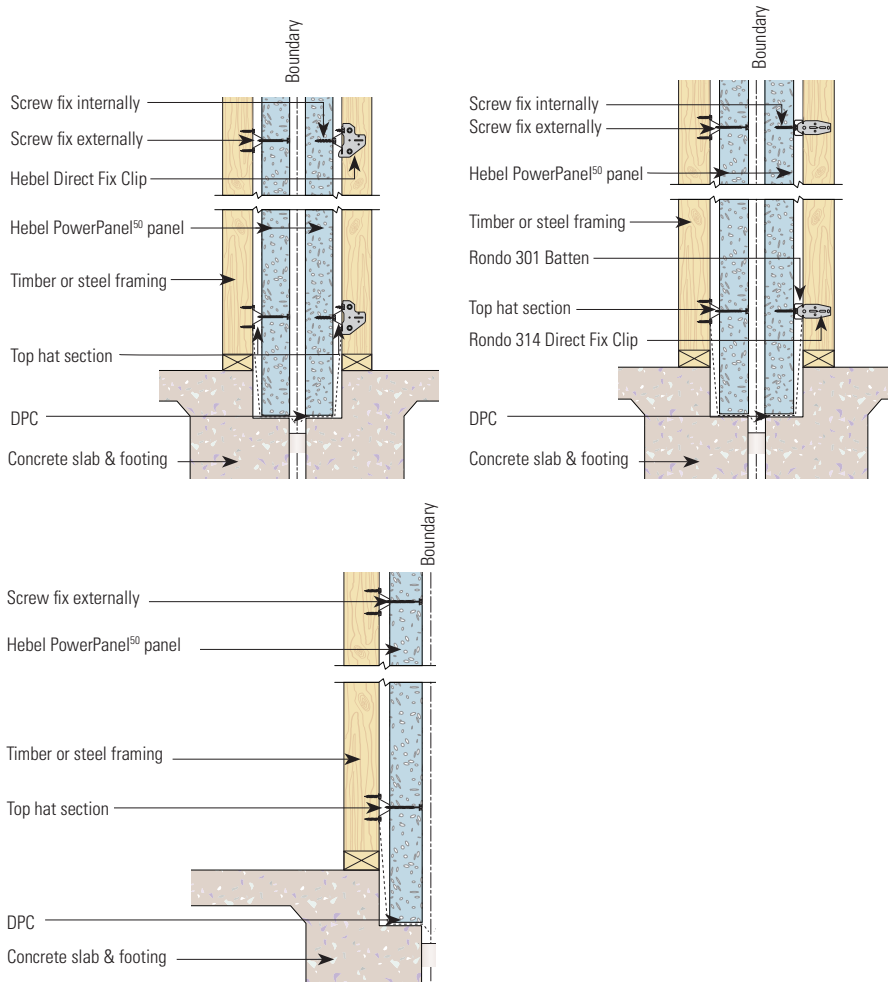


HEBEL POWERPANEL⁵⁰ DUAL ZERO BOUNDARY WALL SYSTEMS

SIMPLE AND EASY TO INSTALL. CODEMARK FOR EASY COMPLIANCE



Hebel PowerPanel⁵⁰ has been developed and tested for low rise Dual Zero Boundary wall systems, which are warranted by CSR.



NOT DAMAGED BY WEATHER DURING INSTALLATION



STRONG AND SOLID



QUALITY AND SPEED



ENERGY EFFICIENT



ECO-FRIENDLY



NOISE REDUCTION



FIRE RESISTANT



PROVEN

POWERPANEL⁵⁰ DUAL ZERO BOUNDARY WALLS

Construction of the non-loadbearing Powerpanel⁵⁰ Dual Zero Boundary wall is achieved by installing 50mm thick Hebel panels vertically - using Hebel Top Hats and Direct Fix Clips to fix panels to the structural timber or steel frame. When using the Hebel Hoist system all frames can be installed first.

■ **Fire rating:** Up to 90/90/90 when subjected to an external fire source

POWERPANEL⁵⁰ STANDARD PANEL SIZES

50mm thick x 600mm wide x 2400mm, 2550mm, 2700mm, 2850mm and 3000mm long.

- Fast and easy system to install with Hebel Hoist
- Perfect solution for separate title construction
- Narrow wall widths
- Hoist system enables all frames to be constructed first
- Simple, proven system

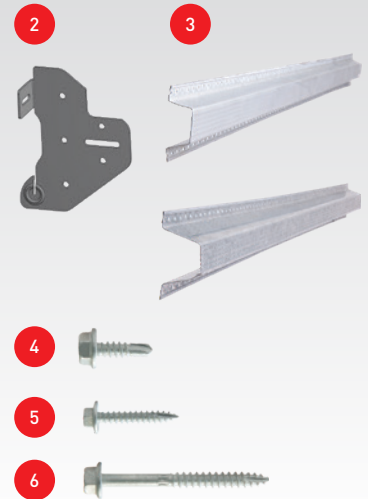
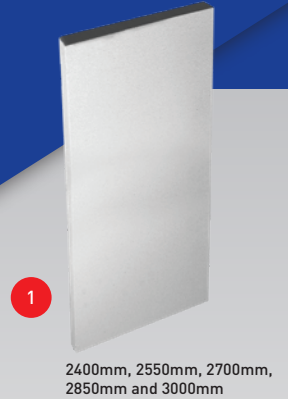
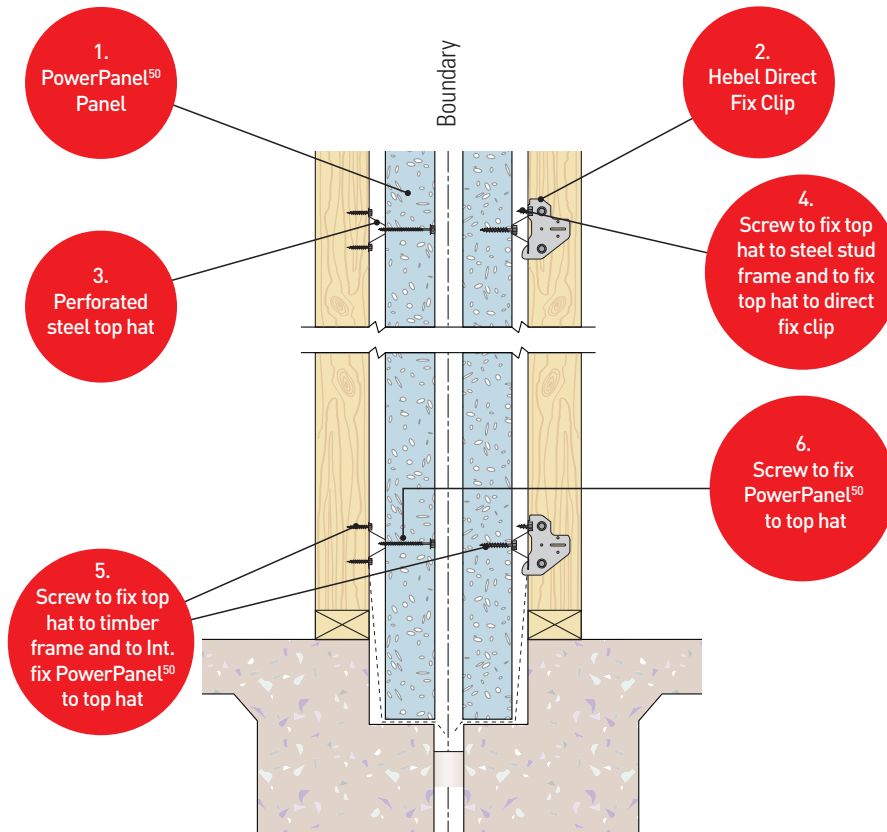


www.hebel.com.au



HEBEL POWERPANEL⁵⁰ DUAL ZERO BOUNDARY WALL SYSTEMS

SIMPLE AND EASY TO INSTALL. CODEMARK FOR EASY COMPLIANCE



ITEM	DESCRIPTION	LOCATION
1	Hebel PowerPanel ⁵⁰	Entire wall area
2	Hebel Direct Fixing Clip - (Exclusive to Hebel Dual Zero Boundary Wall)	Attaching top hat for 50mm Dual Zero Boundary Wall System
3	Perforated Top Hat 24mm x 4.8m x 0.42mm BMT OR 35mm x 4.8mm x 0.55mm BMT	Attaching PowerPanel ⁵⁰ to frame
4	Screw 10-16 x 16 Hex Head self-drilling	Fixing top hat to steel stud frame and fix top hat to direct fix clip
5	Screw 12-11 x 35 Hex Head Type17	Fixing top hat to timber frame and Int. fix PowerPanel ⁵⁰ to top hat
6	Screw 14-10 x 65 Hex Head	Fixing PowerPanel ⁵⁰ to top hat

For more information contact 1300 369 448 www.hebel.com.au



HELI182FEB23