

IMAGINE



CONTEMPORARY MODERN

Characterised by clean lines and sleek finishes, the contemporary modern style has been elevated by the rise of textural finishes and contrast of materials.



Contemporary Modern

Combining bold colours and materials, the modern style highlights the power of contrast.

Render is used to achieve different finishes including polished concrete and sandstone, and blend seamlessly with timber and metals to create a visual impact.

The Hebel PowerPanel^{XL} system is a great choice for facades, to achieve a modern rendered look whilst performing strongly on thermals, acoustics and fire-resistance.



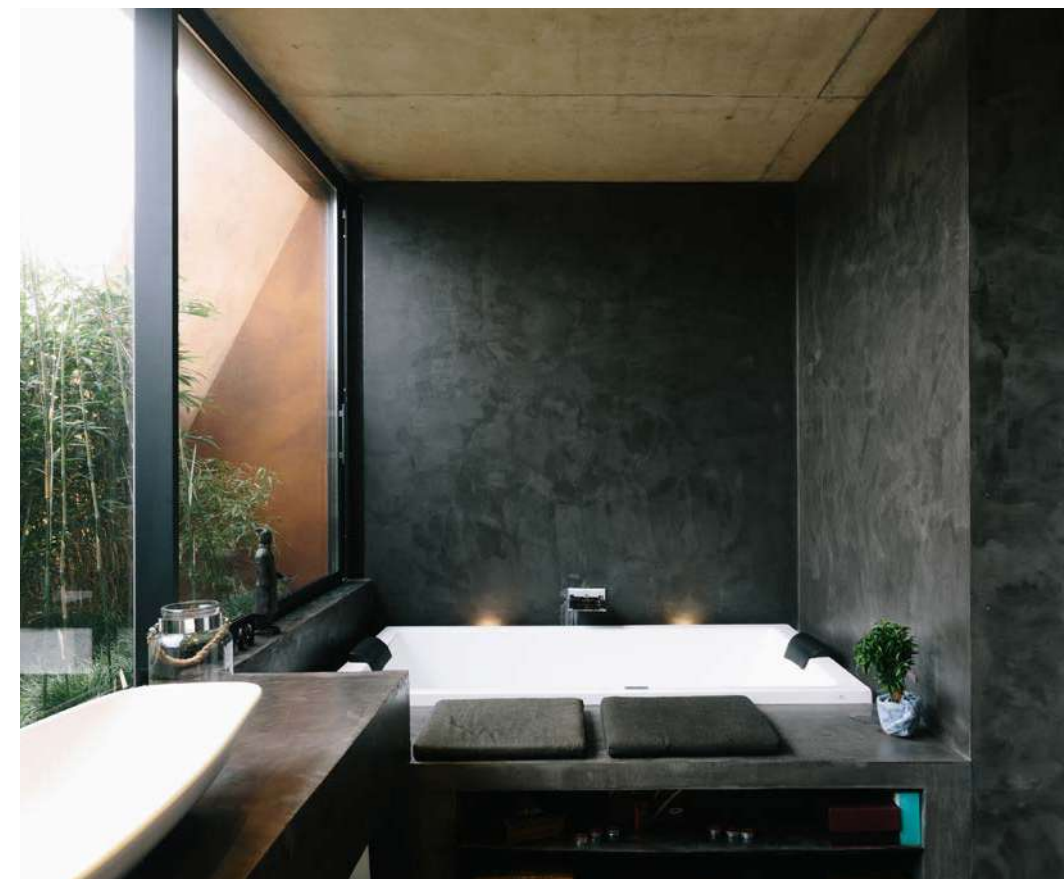
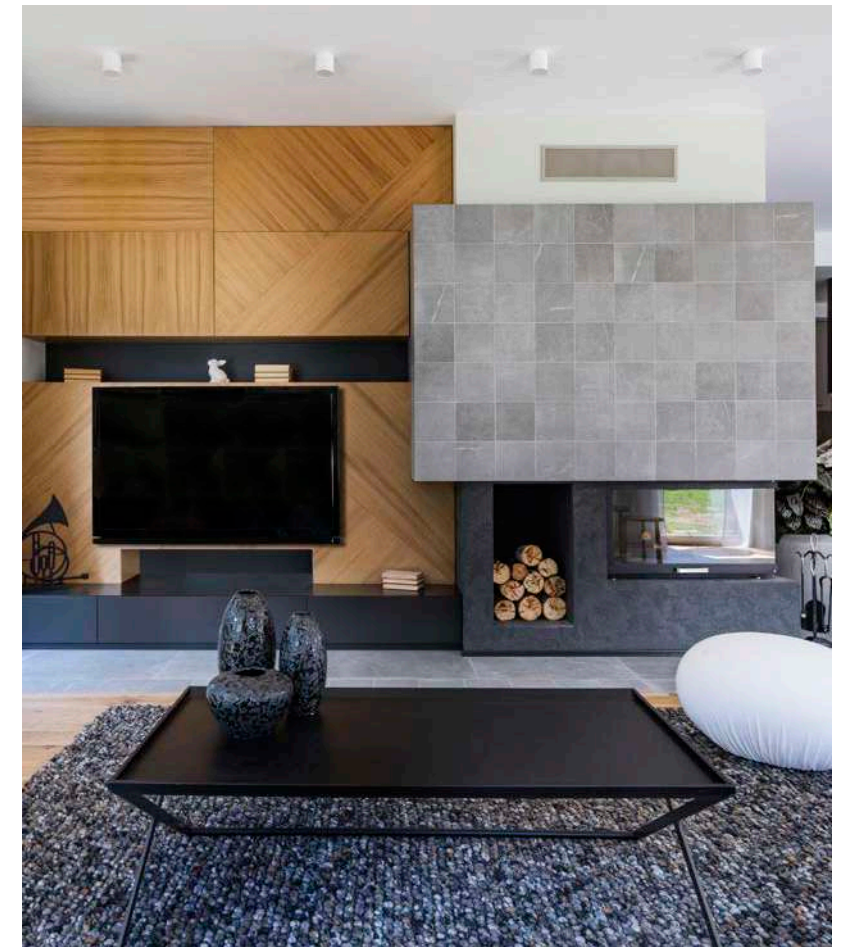


A modern home accounts for today's lifestyle, and the rise of smart spaces that blend the outside with the inside and incorporate technology and appliances.

Styling a modern contemporary space is all about keeping a minimalistic look, whilst injecting warmth through use of textured materials such as timber, polished concrete and terrazzo tiles. Smart decor choices such as rugs and cushions are an easy way to freshen up the space.

An expert tip

Try grouping items on display into groups of 3 or 5 to inject personality into the space.



Dark colours and finishes are proving popular in modern bathrooms. They add depth to the space whilst acting as a neutral backdrop for your fittings and give a sophisticated and luxurious feel.



Clean lines, organic elements, contrasting building materials, earthy neutral tones achieve an interesting textural finish, and inject warmth into the design aesthetic.



Natural light is important in contemporary design, so consider large windows and doors. Simplicity is the key.

Consider an infinity pool as a serene and modern design feature that enhances your home.

Synonymous with the modern style, rendered facades are timeless and mix easily with other materials to create a seamless, stylish facade.

HAMPTONS

~ COASTAL ~

Timeless elegance that exudes a coastal feel, the easily recognisable façade of the Hamptons style embraces a modern, shadow-lined weatherboard, statement window frames and gabled rooflines defined by architectural peaks. Light filled rooms opening out onto perfectly accessorised, spacious outdoor living areas that create a sophisticated yet relaxed romantic summer house lifestyle.





The Hamptons style can be carried through to outdoor living spaces by using natural finishes and understated styling.

Coastal elegance. The Hamptons style utilises a neutral colour palette and lush furnishings to create an inviting space



This aesthetic is timeless and modern. The overall colour palette sees crisp whites at the forefront. Accent your design with soft greys and coastal blues.

Classic cabinetry with glass doors are a typical design element. Traditional shaker-style cabinets provide solid, traditional lines and detailing.



Organic elements are a great start when looking to add statement pieces to your space. Use natural decorative items to add character to your home.



It can be tempting to go all white when it comes to the Hamptons look. Try pairing different textures together and experiment with cane, jute, textured wool and some warmer neutrals to achieve a sophisticated, beach vibe.

Hamptons style is synonymous with the traditional 'weatherboard' look. For a more modern take, try mixing with sleek, rendered elements on your facade.

The Hebel PowerPanel^{XL} system is the perfect choice of material to help you create that sleek, rendered look without compromising on quality or comfortable living!



Consider a mixed composite façade to achieve a look that is both modern and timeless. It can help make the design more modern without detracting from the other more traditional elements.

Pitched ceilings and roofs are a hallmark of this look. They help elevate the design and allow plenty of natural light to enter your home.

The choice of white for interiors and exteriors creates a fresh, bright aesthetic.

RELAXED MEDITERRANEAN

From the Greek Islands to the French Riviera, this season's Mediterranean aesthetic is about bringing dreamy holiday vibes into the home using rendered finishes and textured building materials.



Taking inspiration from the white-washed walls of Santorini, the Mediterranean style incorporates textured render finishes in neutral tones to soften geometric forms.

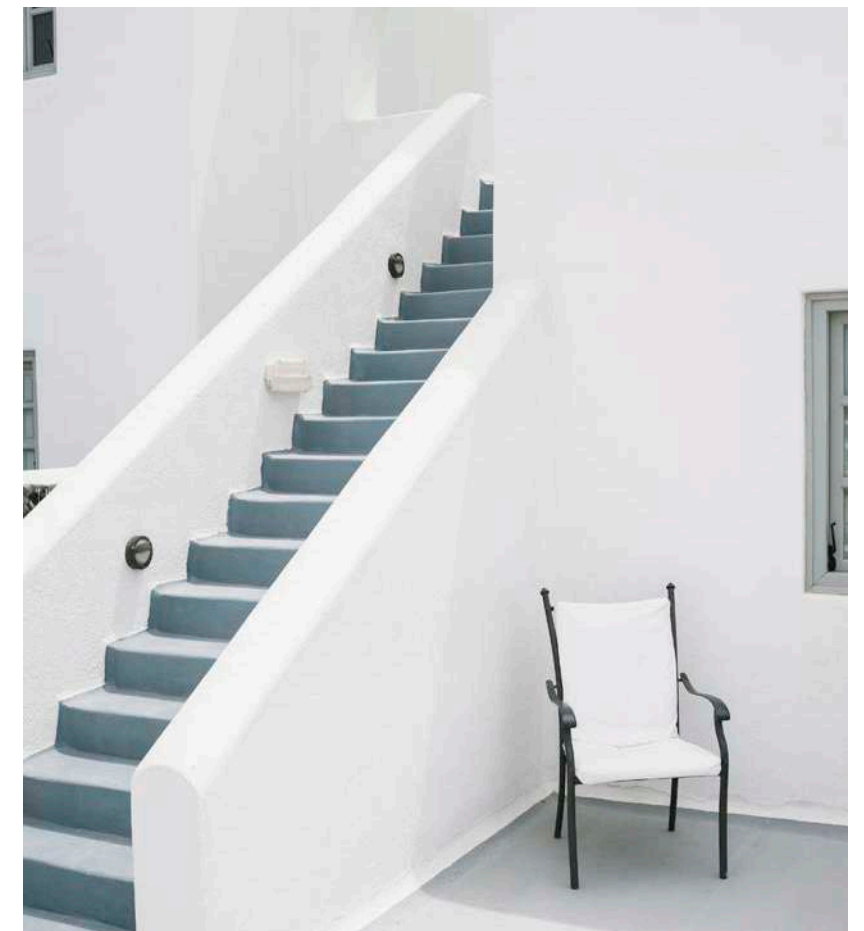




White-washed timber floors are the perfect canvas for bold design choices such as feature lighting and furnishings. Although crisp white may be the primary colour choice, clever use of colours such as turquoise, sapphire and marine blues add interest and warmth to the home.



This look is all about hard materials that give the space an organic and natural feel. The look is clean and minimal.



Soft edges are as practical as they are aesthetic throughout the home, and can be incorporated into design elements such as stairways and doorways.



This look is all about strong geometric lines with vibrant colour accents against white-washed walls.



Whether you choose a sleek, rendered look or opt for a more textured rendered finish, Hebel PowerPanel^{XL} is the perfect building choice for your next home. It can be coated in a range of smooth and textured coating systems and performs exceptionally well in terms of thermals, acoustics and fire-resistance, making it a comfortable home to live in.



Offset the crisp white exterior with soft stones in areas such as your external wall features in the garden or around the pool.

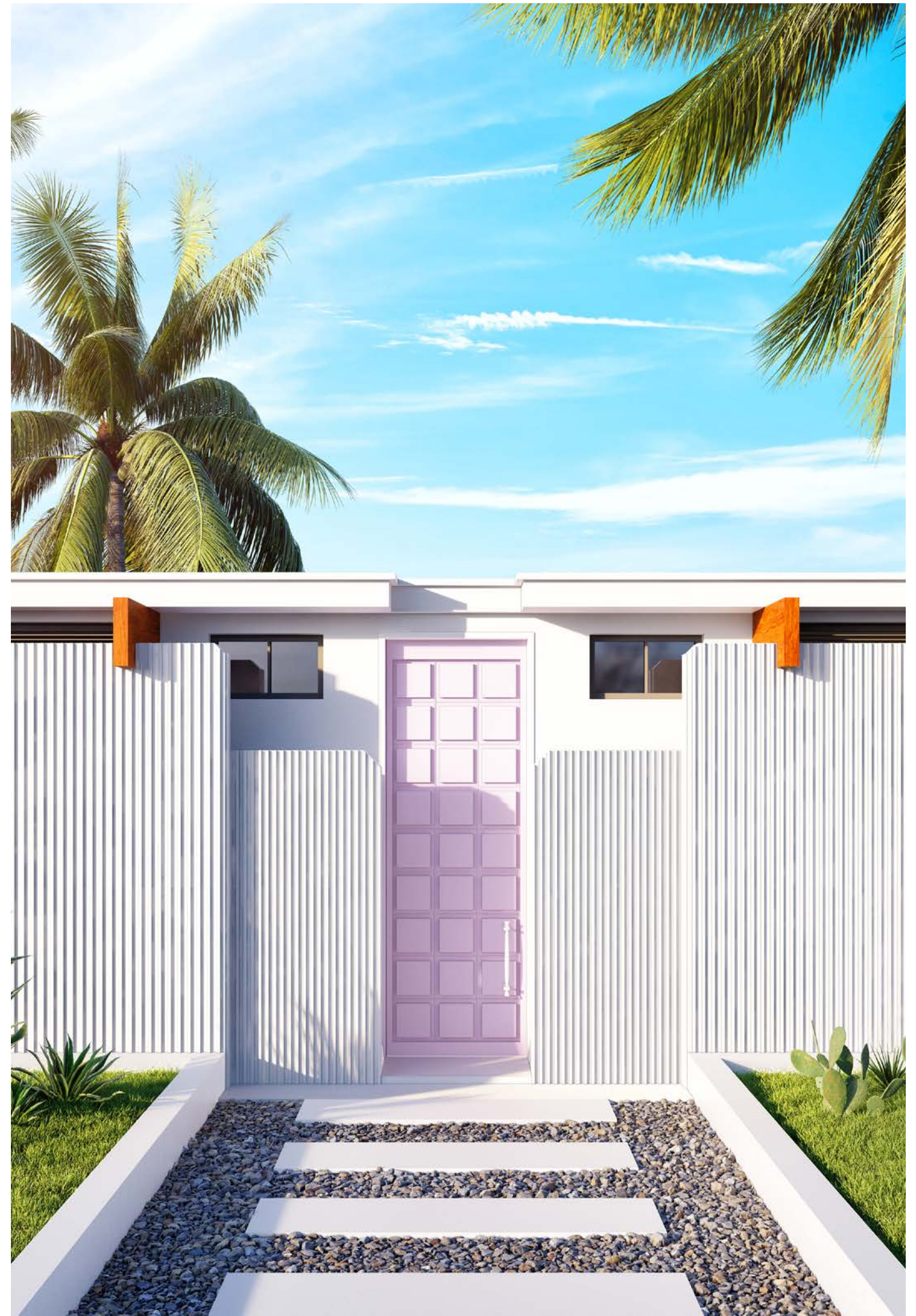
Pro Tip
Consider Hebel PowerPanel^{XL} for external walls. The Hebel panels provide the perfect base for that crisp white Mediterranean exterior.

A modern timber awning or sun shade built into the side of your façade will help bring out the relaxed elements of a Mediterranean lifestyle.

The abundance of complimentary textures such as cane, tiles, concrete and stone create a stunning sanctuary.

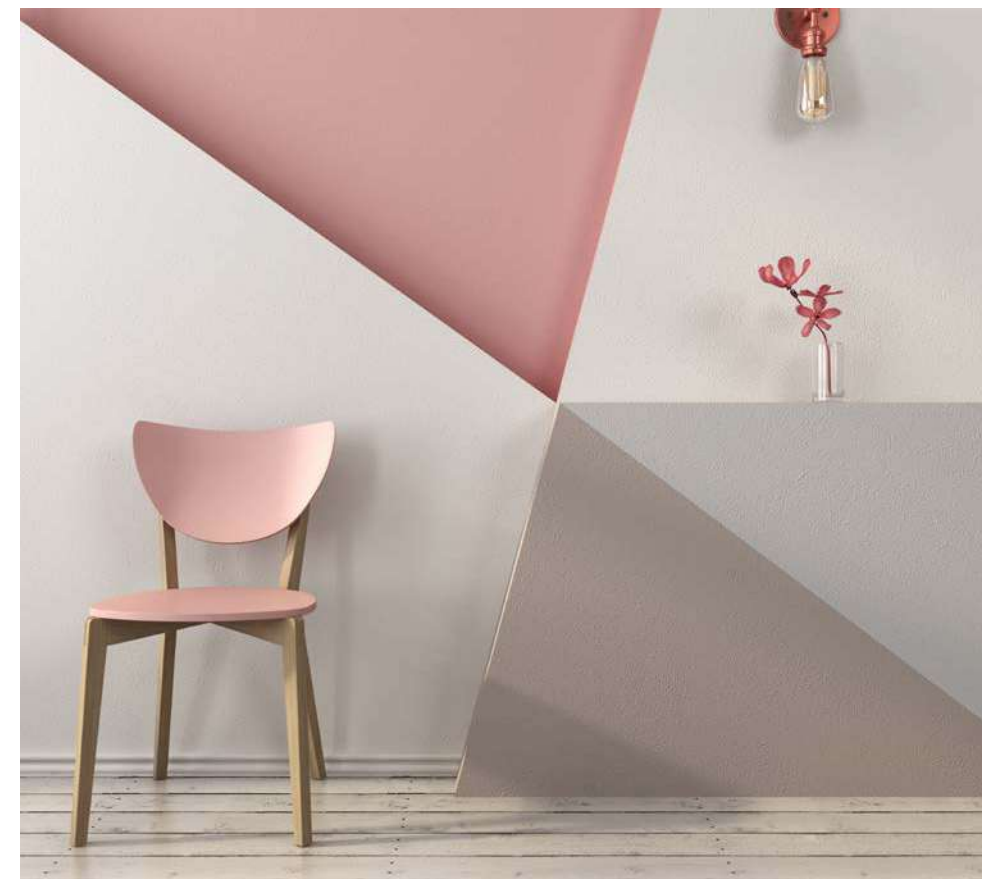
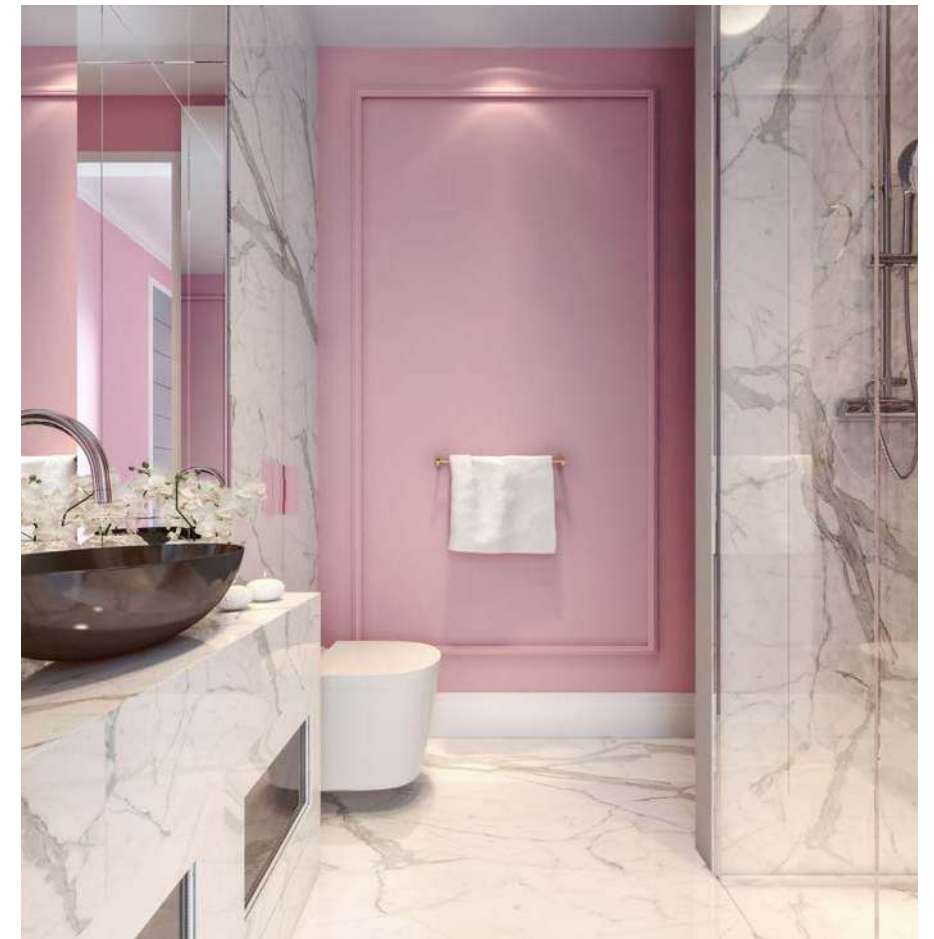
MIAMI PASTELS

Reminisce with one of the season's most fun styles, Miami Pastels.





Think colour! Zingy sherbets, dreamy pastels, ice-cream flavours - the Miami style is all about bringing life to your home. Keep it chic and timeless by mixing with luxe finishes and textures such as marble and rose-gold or copper fixtures



Try introducing elements of the Miami style to your home with some retro designer furniture.



Retro glam, the Miami style borrows as much from South Beach as it does the Caribbean. A rendered facade provides the perfect playground for colours and textures.

Streamlined and structured style elements of the Miami aesthetic incorporates curved archways and frames.

Hebel is a great choice to help you achieve this look. Able to be coated in a range of systems to achieve a smooth-set or textured finish, it also performs well in all conditions, making your home more comfortable to live in.



Pro Tip

Hebel PowerPanel^{XL} system is an excellent choice as it can be easily rendered in an array of different colours and textures, and delivers outstanding performance and home comfort benefits.

Consider how some features could embrace rounded, rendered curves to help soften your silhouettes.

Use a smooth rendered facade so that you can easily overlay it with a pastel-hued modern palette that matches your creative vision.



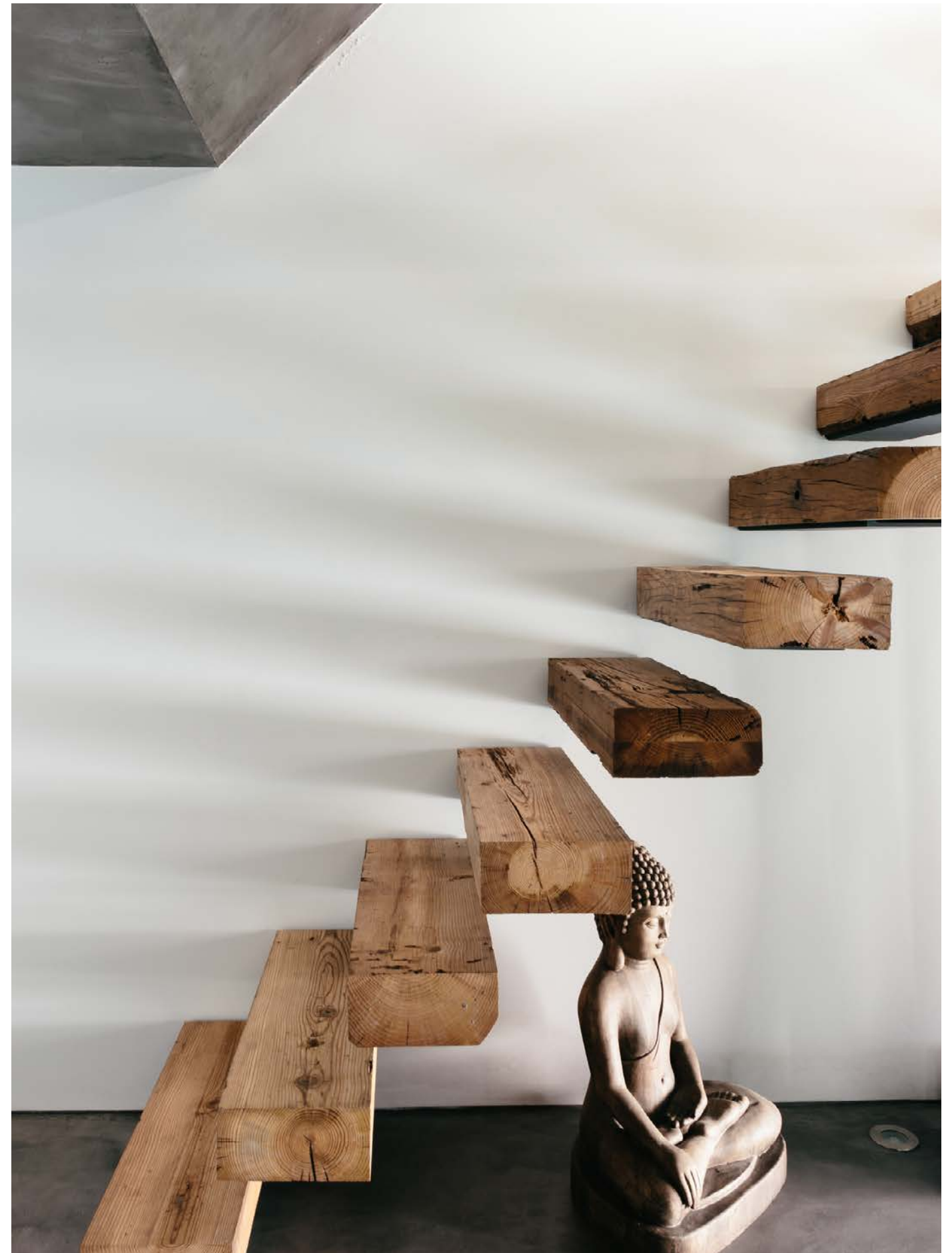
INDUSTRIAL

The raw, minimalistic style that isn't afraid to bare it all.
Blending together hard materials in a structured way,
the Industrial style can be a strong, bold choice for a beautiful home.

Contrasting materials and use of multiple products on the facade of the home is a popular trend.

The Industrial style pairs concrete finishes with timber, brick or aluminum to achieve this look.





Organic finishes, stark whites and timber breathe life into Industrial spaces and work well when contrasted against exposed concrete surfaces.



Industrial design requires courage. There's something unapologetic by boldly exposing your building's raw materials.



A considered material palette can enhance the Industrial shape and form.

Mix raw timber with sandstone; slate with concrete; aluminum with render.

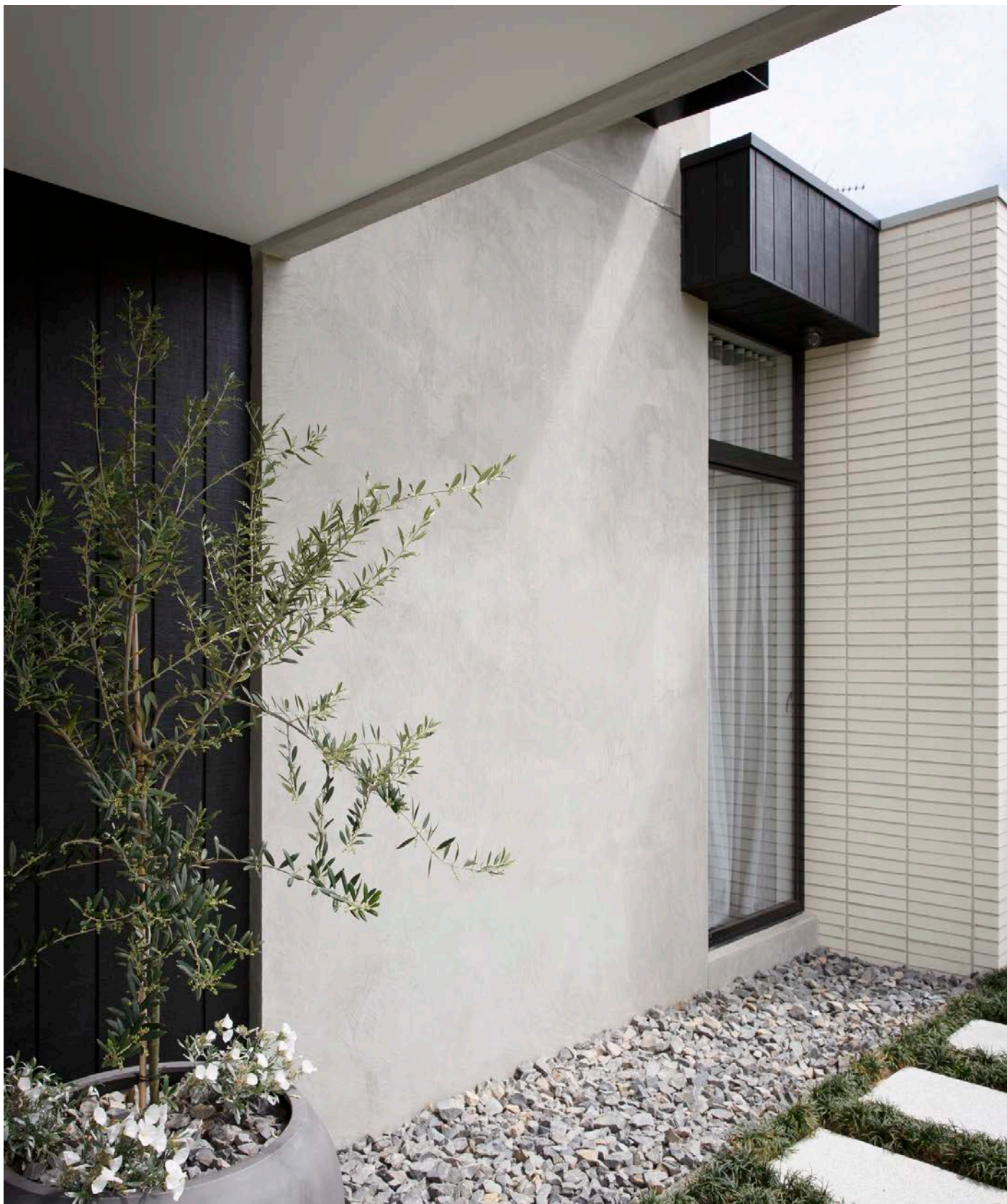


Pro Tip

Hebel PowerPanel^{XL} is an excellent choice particularly when looking to achieve that raw, unfinished concrete look for your external walls.

Soft ash timber cladding defines the structural form of the upper storey.

To extend the Industrial look into the landscape, use raw materials such as stone and gravel.



For more information about Hebel please call 1300 443 235 or visit www.hebel.com.au

For more information about suitable coating systems to achieve the looks indicated in this document, please contact www.rockcote.com.au or www.dulux.com.au

Disclaimer: Information presented in this document is supplied in good faith and to the best of our knowledge at the time of preparation. Selected imagery has been computer generated and may vary from actual product in regard to colour and surface finish. The provision of this information should not be construed as a recommendation to use any of our products in violation of any patent rights or in breach of any statute or regulation. Users are advised to make their own determination as to the suitability of this information in relation to their particular purpose or specific circumstances. Since the information contained in this document may be applied under conditions beyond our control, no responsibility can be accepted by Hebel, or its staff for any loss or damage caused by any person acting or refraining from action as a result of misuse of this information.

Hebel® is a registered trademark of the Xella group. CSR Building Products Ltd is an exclusive licensee of Xella. CSR Hebel is a business of CSR Building Products Ltd. ABN 55 008 631 356. PowerPanelXL, PowerPanel®, and PowerFloor® are registered trademarks of CSR Building Products Limited.

HELIT203June20.

hebel®
The better way to build

