

CEMINTEL®

+

hebel®

The better way to build



# Junction Guide



Cemintel Territory  
Brick Red Rustic



Cemintel Territory  
Quarry Concrete

+



Hebel  
PowerPanel<sup>XL</sup>



Hebel PowerProfile  
Bullnose





# A complete facade solution under one roof.

Hebel  
PowerPanel<sup>XL</sup>

Cemintel  
Scarborough  
Weatherboards

*Selected imagery has been computer generated and may also vary from actual product.*

The Cemintel and Hebel Junction Guide streamlines the process of achieving mixed facade solutions, bringing some of CSR's leading brands together under one roof.

This guide provides clear, best-practice expertise, ensuring seamless installation and durability where Cemintel and Hebel meet. It simplifies the creation of on-trend facades with ease, delivering high-quality results through versatile, durable materials backed by CSR's trusted reputation.

With Cemintel and Hebel, you achieve more than just a stylish exterior. These products combine for energy efficiency, safety, and design flexibility, supported by CSR's industry expertise and commitment to sustainability. The DesignLINK team further ensures confidence by resolving technical challenges, providing engineering support, and simplifying the specification process for complex projects.



### Quality and performance

Cemintel and Hebel, backed by CSR's trusted legacy, deliver high-quality, energy-efficient, and safe building envelopes that meet modern construction demands.



### Design versatility

The combination of Cemintel and Hebel offers on-trend, mixed facades solutions with flexibility and durability, allowing for stylish, contemporary designs.



### Professional support

With expert guidance from CSR's DesignLINK team, you'll receive technical support and tailored solutions to ensure seamless installation and project success.

## Contents.

<b>How to use this guide.</b>	<b>4</b>
<b>Creating your perfect facade.</b>	<b>5</b>
Contemporary	6
Industrial	7
Barnhouse	8
Modernist	9
Classic	10
Coastal	11
<b>Cemintel. Your look, your way.</b>	<b>12</b>
<b>There's only one Hebel.</b>	<b>14</b>
<b>Junction details.</b>	<b>15</b>
<b>Cemintel Territory to Hebel &amp; Masonry</b>	<b>16</b>
<b>Cemintel Express Joint Systems to Hebel &amp; Masonry</b>	<b>20</b>
<b>Cemintel Weatherboards &amp; Planks to Hebel &amp; Masonry</b>	<b>24</b>
<b>Hebel to Masonry &amp; Cemintel Cladding</b>	<b>27</b>
<b>Cemintel Cladding to Territory</b>	<b>30</b>
<b>Cemintel Cladding to Weatherboards &amp; Plank</b>	<b>34</b>
<b>Helpful Resources.</b>	<b>37</b>



# How to use this guide.

Use this guide to understand the style of home you want and learn about cladding combinations to create the look you love. Once you've decided on your look, find the junctions you'll need to finish it. Step through each of the three stages and refer to the relevant CSR websites for more information.

## Step 1

### Find your look.

Explore the different styles of homes, including Classic, Modernist, Industrial or Coastal. Find the style that you love and research the trends behind that style.

[CSR Style Guide landing page for Cemintel](#) 

[CSR Style Guide landing page for Hebel](#) 

## Step 2

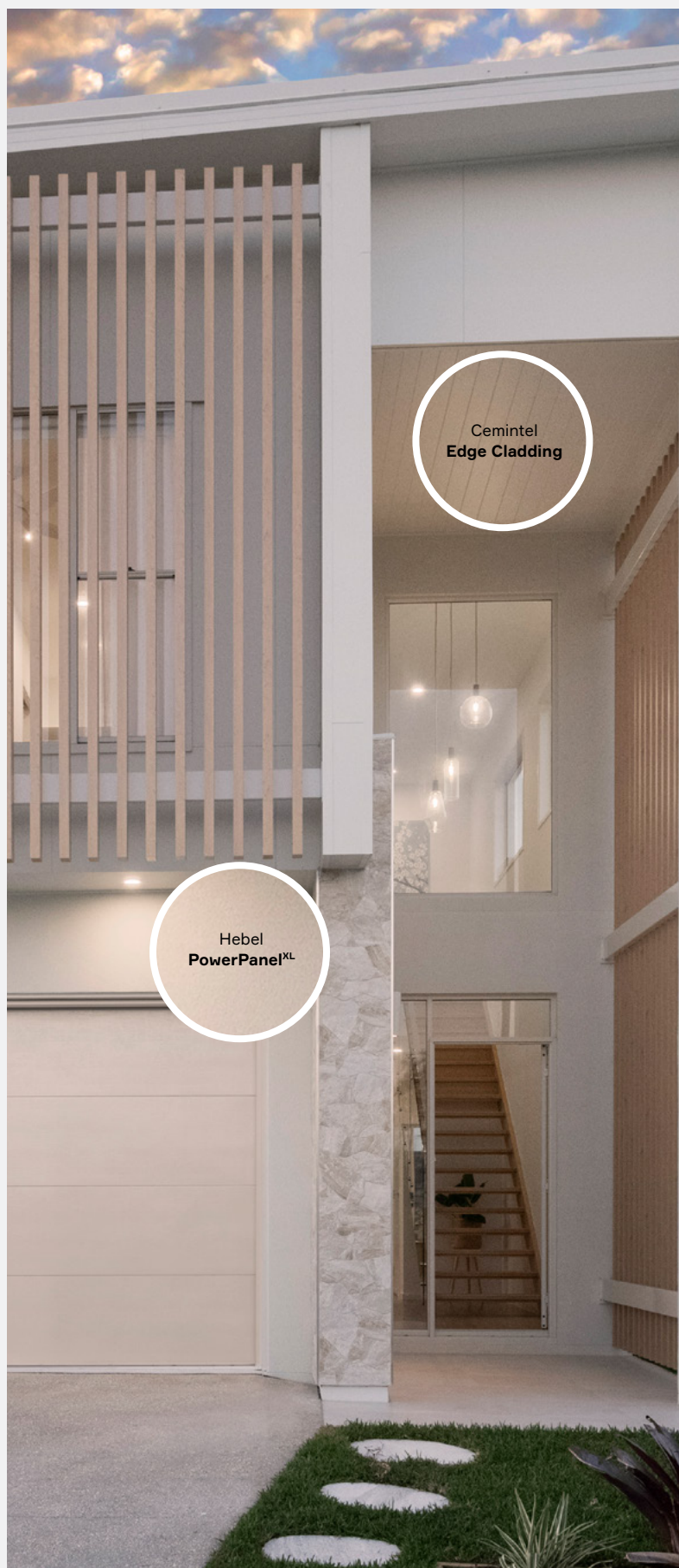
### Discover the cladding combination.

After discovering your style, dive into the Cemintel and Hebel cladding combinations that bring it to life. Use this guide for the details, and visit the Cemintel and Hebel websites for more inspiration.

## Step 3

### Get the details you need.

You've nailed your style and chosen the perfect Cemintel and Hebel cladding combinations. Now, head to the technical section of this guide for detailed instructions on the joints and junctions needed to bring your vision to life.





Start with style

# Creating your perfect facade.

When designing with different cladding combinations, the look should always come first. The CSR Style Guide is your starting point for exploring on-trend designs and curated colour palettes, making it easy to visualise how Cemintel and Hebel materials work together to create a seamless, modern facade. This guide brings inspiration to life, helping you find the ideal aesthetic while ensuring lasting durability and quality backed by CSR's expertise.



Hebel  
**PowerPanel<sup>XL</sup>**

Hebel  
**PowerProfile  
Bullnose**

Cemintel  
**Territory Quarry  
Concrete**

*Selected imagery has been computer generated and may also vary from actual product.*



# Contemporary

Cemintel and Hebel's range of choices is perfect for creating that elegant Contemporary finish. Striking lines and an elegant colour palette help create that modern sophistication. The key elements of a Contemporary design invoke a commitment to minimalism, allowing curvaceous exteriors to flow seamlessly into the interiors using a pared-back palette that is reflected throughout the connecting spaces.



Barestone  
Original



Edge Cladding  
Bond



Hebel  
PowerPanel<sup>XL</sup>



Hebel  
PowerPattern



*Selected imagery has been computer generated and may also vary from actual product.*



# Industrial

An industrial home features bold facades and warehouse-style rooflines that create a striking yet liveable design. Inspired by commercial buildings, it incorporates exposed brick, layered textures, and raw, unfinished surfaces. The dynamic facades add depth and tie the industrial aesthetic together, both inside and out.

**Cemintel** + **Hebel**



Territory Brick  
**Red Rustic**



Territory Quarry  
**Concrete**



Hebel  
**PowerPanel<sup>XL</sup>**



Hebel  
**PowerProfile**



*Selected imagery has been computer generated and may also vary from actual product.*



# Barnhouse

Barnhouse is an elegant, urban take on country style using Cemintel and Hebel cladding to deliver aesthetic and clean vertical lines. Barnhouse homes feature classic cladding, a symmetrical gable roofline and long, open spaces; it's a design that is dramatic and minimalist.

**Cemintel** + **Hebel**

			
Territory <b>Quarry Concrete</b>	Territory <b>Woodlands Ebony</b>	Hebel <b>PowerPanel<sup>XL</sup></b>	Hebel <b>PowerProfile with trapezoidal profile</b>





# Modernist

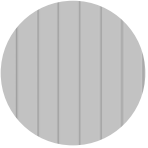
An update on the Mid-Century Modern aesthetic, our Modernist home design draws on architectural styling of that period to create a light-filled and liveable family home using Cemintel and Hebel mixed material facades with carefully placed windows.



Territory  
Woodlands Teak



Territory  
Brick White Rustic



Edge Cladding  
Ribbon



Hebel  
PowerPanel<sup>XL</sup>





# Classic



Classic homes have a relaxed and welcoming feeling. They have traditional gable rooflines using distinctive Cemintel and Hebel fibre cement cladding for a reassuringly familiar look. Referencing the popular Hamptons style of recent years but updating it for contemporary Australia, our Classic home design features linear timber details and a muted colour scheme.



Balmoral  
Weatherboards



Cemintel  
Trims



Hebel  
PowerPanel<sup>XL</sup>



*Selected imagery has been computer generated and may also vary from actual product.*



# Coastal

This coastal home design is built in our bright white material palette, which is a perfect choice for the architecture to be the hero. With a mixed material facade, a Coastal home has an elegant, sophisticated style. This stylish design uses lightweight materials and elegant curves to create inviting spaces. The key to making this design a success is a mix of textures – and choosing a fresh, all-white material palette that can unite textural layers.



Territory  
**Brick White Rustic**



Territory  
**Woodlands Limed**



Hebel  
**PowerPanel<sup>KL</sup>**



Cemintel  
**Territory Woodlands  
Limed**

Cemintel  
**Territory Brick  
White Rustic**

Hebel  
**PowerPanel<sup>KL</sup>**

*Selected imagery has been computer generated and may also vary from actual product.*

# Cemintel. Your look, your way.

Cemintel's versatility makes creating the looks your customers love easier than ever. With a range of products that are prefinished or ready to paint, you can simply decide on the look you want and make it your own. Plus, our trade essentials range of products are available to increase the durability of your build. From Coastal Weatherboards to Territory Cladding that replicate the most popular finishes, there's a finish for you and your customer.



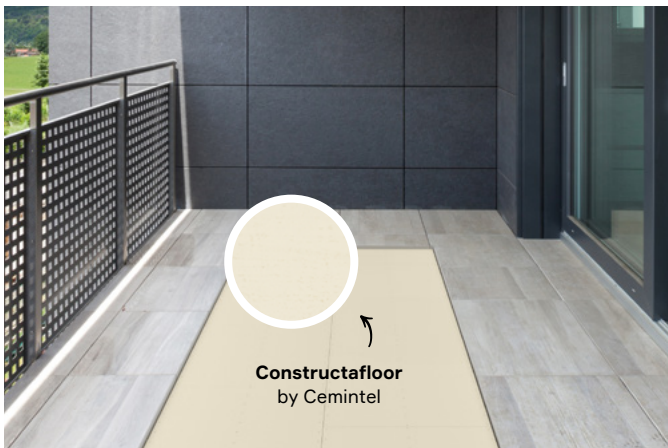
## Prefinished.

Choose from three striking options: Surround for bold colour statements, Territory for brick and timber textures, and Barestone for raw concrete beauty. Cemintel's Prefinished Series merges functionality with aesthetics, offering a curated selection of products that need no additional treatment.



## Paint-on-site.

Cemintel offers a versatile range of fibre cement cladding that can be painted on-site, allowing for endless customisation with popular exterior paint colours.



## Trade Essentials.

Cemintel Trade Essentials are fibre cement products designed for common building applications such as internal linings, flooring underlays, eaves and more. These products are a staple in a builder's list of go-to because they are cost effective, durable and tough.

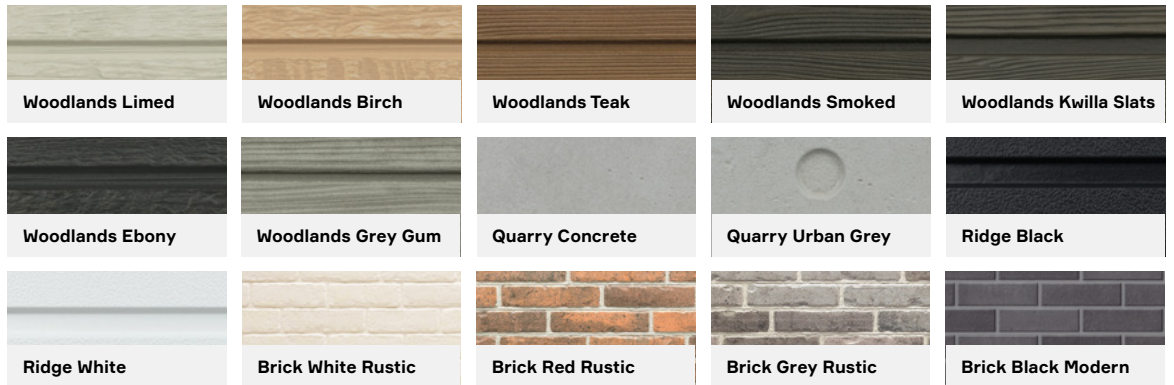


## Prefinished

### Surround Cladding



### Territory Cladding

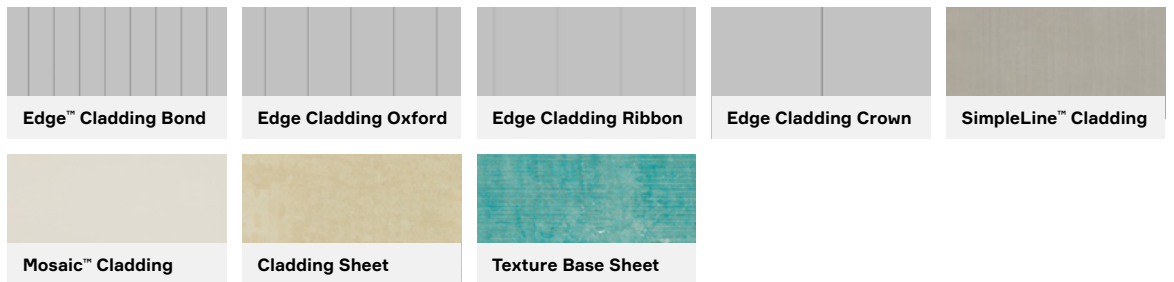


### Barestone Cladding



## Paint-on-site

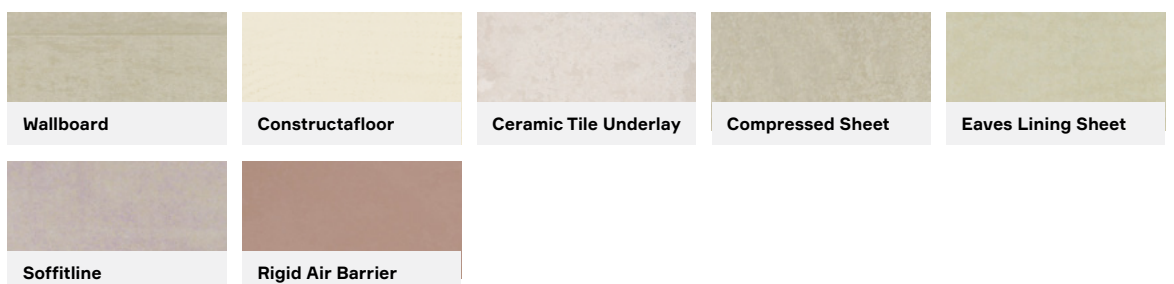
### Panel Cladding



### Weatherboards and Planks



## Trade essentials



# There's only one Hebel.

Hebel is the ultimate versatile product, offering solutions from floor to wall to ceiling. Enjoy both form and functionality with a flexible solution that provides year-round comfort. Add your favourite Cemintel facade to the Hebel mix to create striking contrasts.



## Versatile

Hebel solutions include floor panels that are strong and solid underfoot. Hebel wall panels can be rendered to deliver the look you want.



## Comfortable

Hebel panels have excellent thermal capabilities, creating year-round comfort while reducing energy bills.



## Lightweight

Fast and easy to install, one standard Hebel panel is the equivalent of 75 traditional bricks, which means a 150m<sup>2</sup> home can go up as quickly as within 3 days when installed by experienced Hebel installers.



*Selected imagery has been computer generated and may also vary from actual product.*

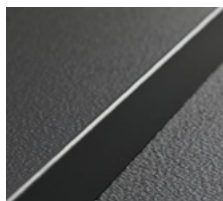
## Hebel products



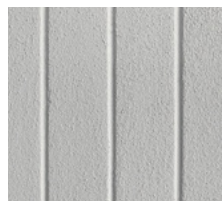
PowerPanel<sup>XL</sup>



PowerPanel<sup>50</sup>



PowerProfile Bullnose



PowerPattern Track



# Junction details.

## Cemintel Territory to Hebel & Masonry

---

Horizontal Territory to Hebel	<a href="#">↗</a>
Horizontal Territory to Masonry	<a href="#">↗</a>
Horizontal Territory to Parapet & Roof	<a href="#">↗</a>
Vertical Territory to Hebel	<a href="#">↗</a>

## Cemintel Express Joint Systems to Hebel & Masonry

---

Cemintel Express Joint Systems to Hebel	<a href="#">↗</a>
Cemintel Express Joint Systems to Masonry	<a href="#">↗</a>
Cemintel Express Joint Systems to Parapet & Roof	<a href="#">↗</a>

## Cemintel Weatherboards & Planks to Hebel & Masonry

---

Cemintel Weatherboard & Planks to Hebel	<a href="#">↗</a>
Cemintel Weatherboard & Planks to Hebel & Masonry	<a href="#">↗</a>
Cemintel Weatherboard & Planks to Parapet & Roof	<a href="#">↗</a>

## Hebel to Masonry & Cemintel Cladding

---

Hebel to Parapet & Roof	<a href="#">↗</a>
Hebel to Masonry	<a href="#">↗</a>

## Cemintel Cladding to Territory

---

Cemintel Cladding to Horizontal Territory	<a href="#">↗</a>
Cemintel Cladding to Vertical Territory	<a href="#">↗</a>

## Cemintel Cladding to Weatherboards & Plank

---

Cemintel Cladding to Weatherboards & Planks	<a href="#">↗</a>
---	-------------------



# Cemintel Territory to Hebel & Masonry

## Cemintel

Territory Woodlands  
Territory Quarry  
Territory Ridge  
Territory Brick (Horizontal only)



## Hebel

PowerPanel<sup>XL</sup>  
PowerPanel<sup>50</sup>  
PowerProfile  
PowerPattern Track

This table highlights four different combinations of Cemintel and Hebel systems, with each column of the table as a combination. The columns nominate the particular top hat or batten sizes which allow the outside surface of the Cemintel and Hebel to systems to align the best. If surface alignment is not required then other top hats or battens from the respective system guide can be used.

### Cemintel

	35mm Top Hat	45mm Top Hat	50mm Top Hat	75mm Top Hat
	15mm Clip	15mm Clip	15mm Clip	15mm Clip
	16mm Territory	16mm Territory	16mm Territory	16mm Territory
<b>Total</b>	<b>66mm</b>	<b>76mm</b>	<b>81mm</b>	<b>106mm</b>

### Hebel

	15mm Batten	24mm Top Hat	35mm Top Hat	24mm Top Hat
	PowerPanel <sup>50</sup>	PowerPanel <sup>50</sup>	PowerPanel <sup>50</sup>	PowerPanel <sup>XL</sup>
<b>Total</b>	<b>65mm</b>	<b>74mm</b>	<b>85mm</b>	<b>99mm</b>

### Detail Notes

1. The details are suitable for steel and timber framing, refer to the respective system Design and Installation Guide for more information including specific fixings, spacing and load limits.
2. If a Territory system is used with top hats, the project engineer is required to design the top hat spacing and fixing to the frame. Note for Horizontal Territory, the horizontal top hats must be at 455mm centres and 1.15mm BMT min.
3. If packing is required between top hat and framing, the project engineer is required to consider it in their design.
4. Packing up to 9mm can be used between the frame and top hats for the Hebel systems, provided the Hebel panels are supported at the base.
5. The wind pressure limit of the junction will be limited by the lower value of either system in the detail. Refer to the system guide or CodeMark for weather tightness performance limits.

### IMPORTANT INFORMATION

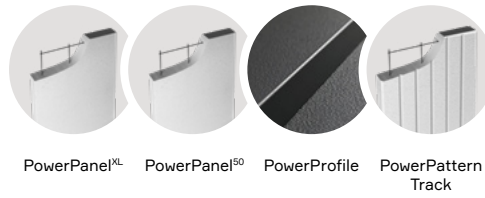
The information in this technical detail is given as a guide and is intended for use in relation to the relevant Cemintel and Hebel products only. The specific joint / junction detail must be reviewed in conjunction with the relevant Cemintel and Hebel Design & Installation guides, current at the time of purchase, and any other relevant Cemintel and Hebel technical resources.



**Cemintel**

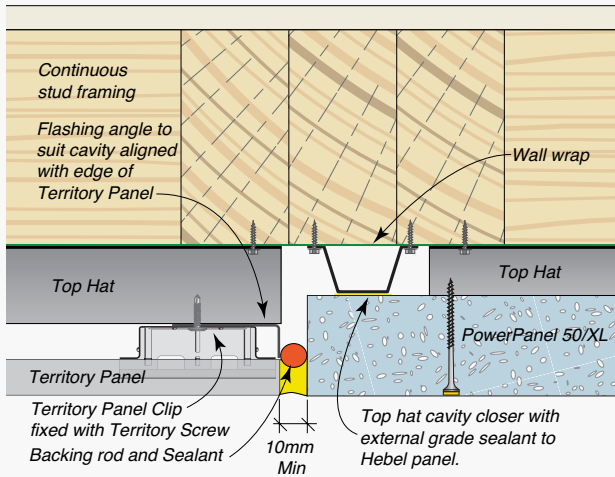


**Hebel**



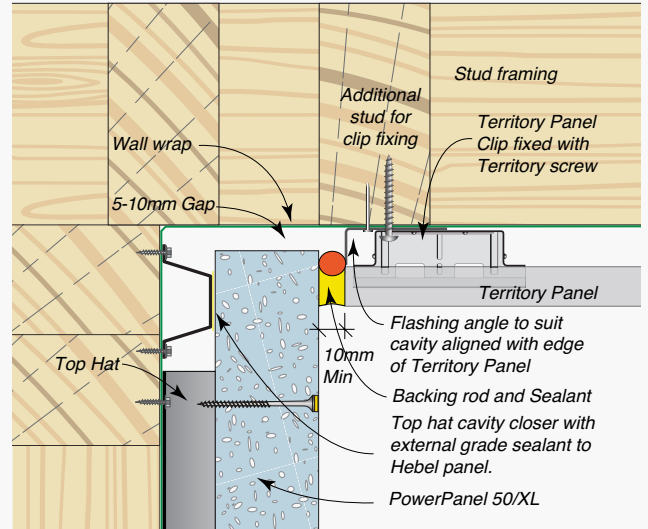
**Fig 1.1 Vertical Joint**

Horizontal Territory to Hebel | Top view



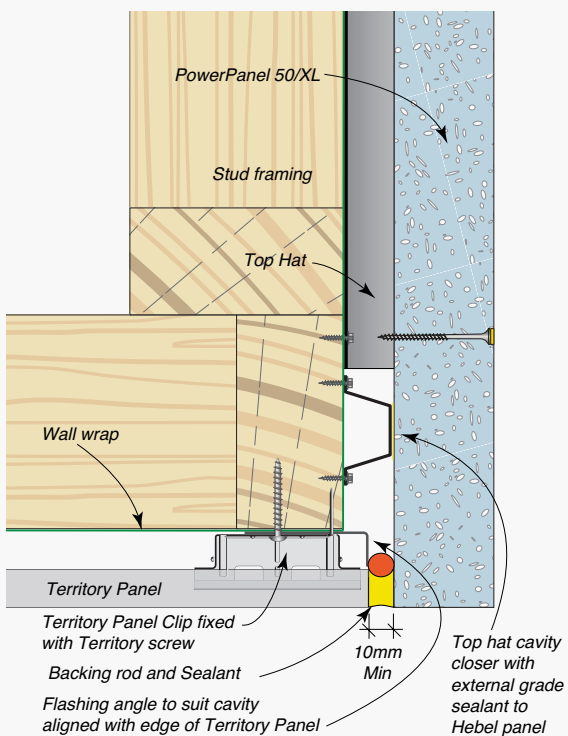
**Fig 1.2 Internal Corner**

Horizontal Territory to Hebel | Top view



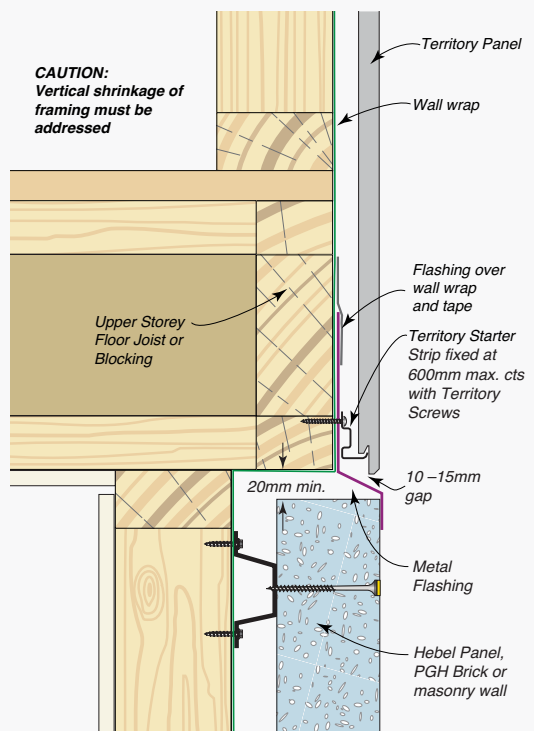
**Fig 1.3 External Corner**

Horizontal Territory to Hebel | Top view



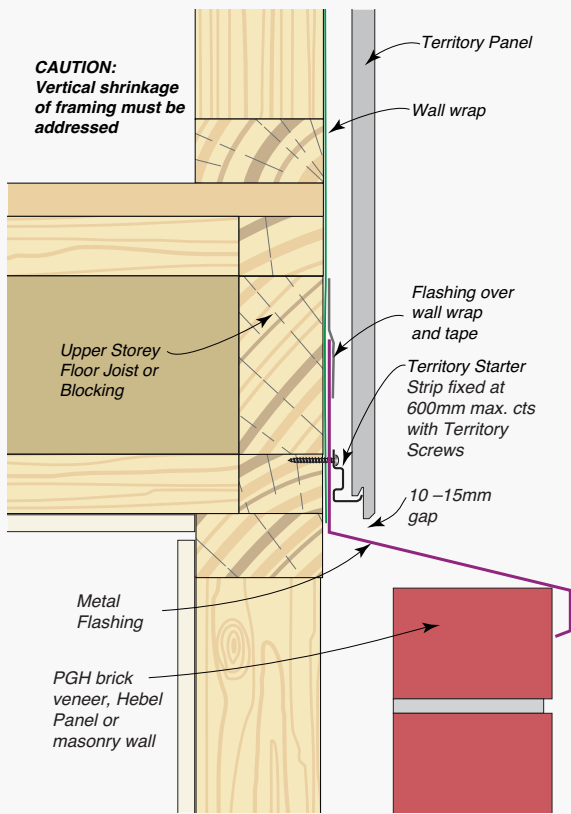
**Fig 1.4 Horizontal Joint**

Horizontal Territory to Hebel | Side view



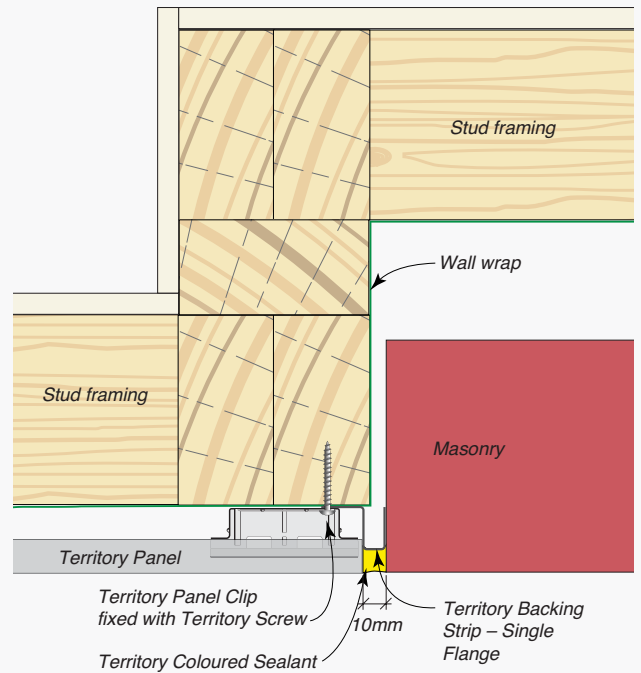
**Fig 1.5 Horizontal Joint**

Horizontal Territory to Masonry | Side view



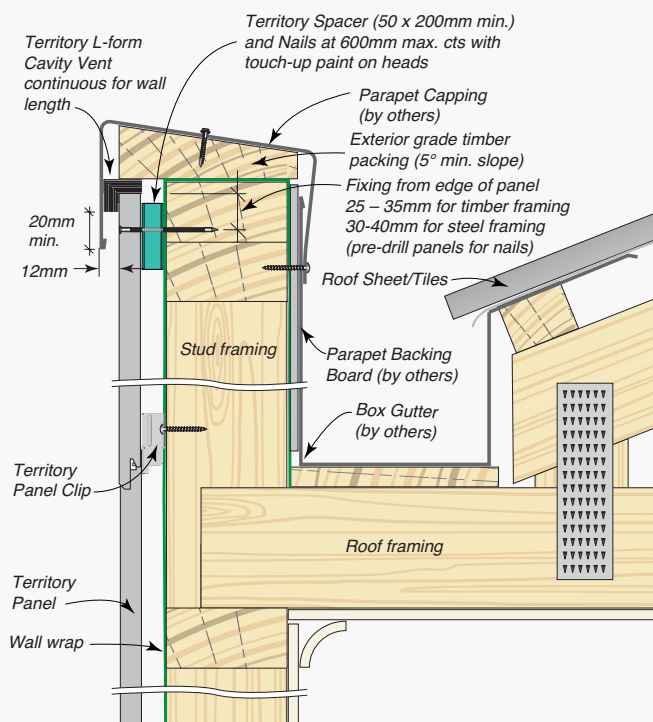
**Fig 1.6 Vertical Joint**

Horizontal Territory to Masonry | Top view



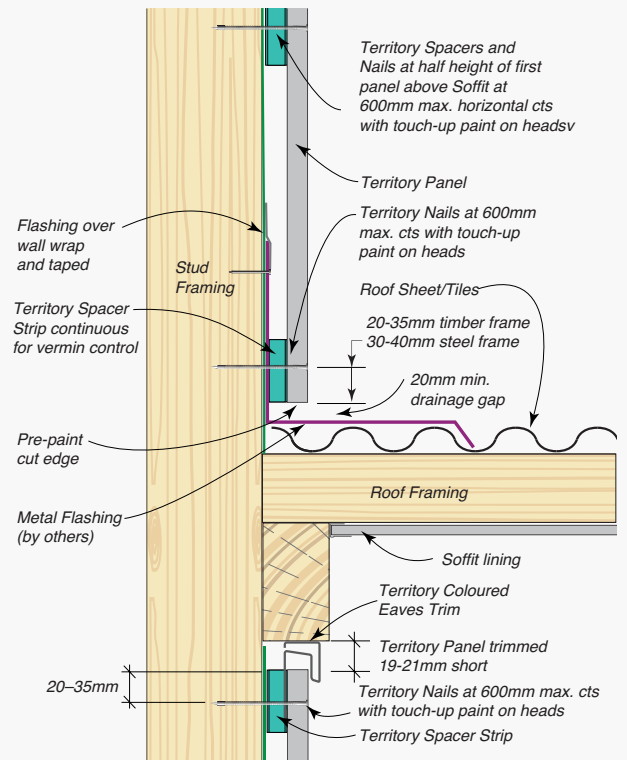
**Fig 1.7 Parapet and Roof Junction**

Horizontal Cemintel Territory | Side view



**Fig 1.8 Porch / Flat Roof Junction**

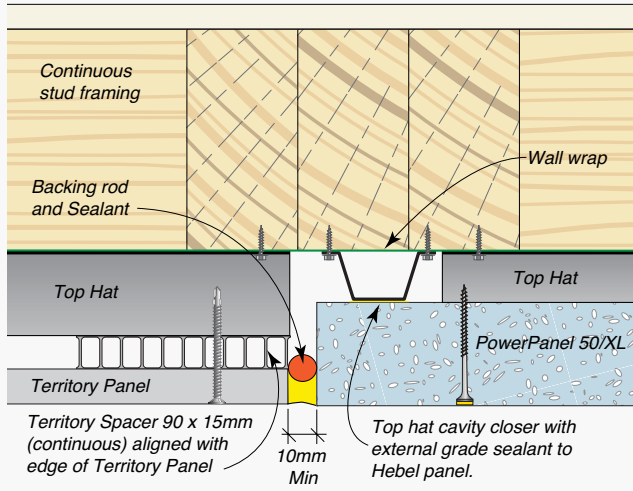
Horizontal Cemintel Territory | Side view





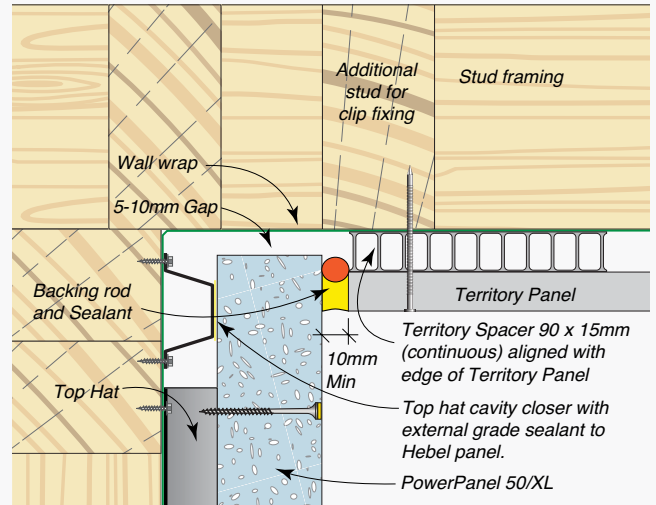
**Fig 1.9 Vertical Joint**

Vertical Territory to Hebel | Top view



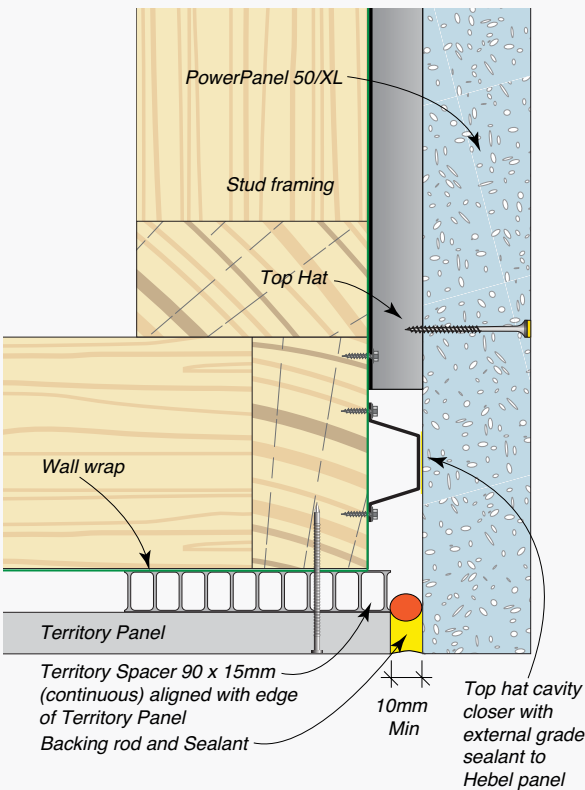
**Fig 1.10 Internal Corner**

Vertical Territory to Hebel | Top view



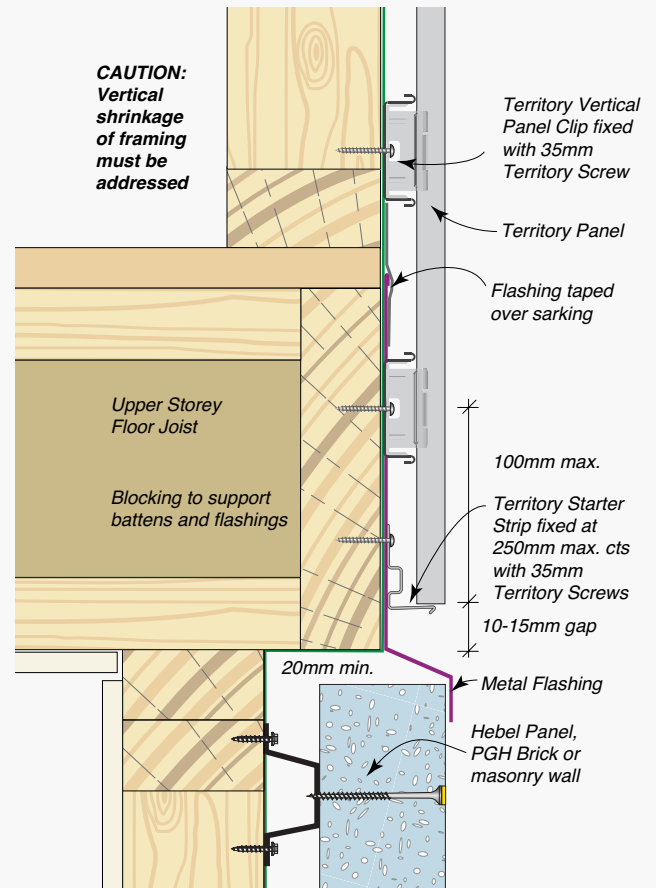
**Fig 1.11 External Corner**

Vertical Territory to Hebel | Top view



**Fig 1.12 Horizontal Joint**

Vertical Territory to Hebel | Side view





# Cemintel Express Joint Systems to Hebel & Masonry

Cemintel	+	Hebel
Surround		PowerPanel <sup>XL</sup>
Barestone		PowerPanel <sup>50</sup>
ExpressPanel		PowerProfile
		PowerPattern Track

This table highlights four different combinations of Cemintel and Hebel systems, with each column of the table as a combination. The columns nominate the particular top hat or batten sizes which allow the outside surface of the Cemintel and Hebel to systems to align the best. If surface alignment is not required then other top hats or battens from the respective system guide can be used.

<b>Cemintel</b>				
	25mm Horizontal Top Hat	35mm Horizontal Top Hat	45mm Horizontal Top Hat	60mm Horizontal Top Hat
	35mm Vertical Top Hat	35mm Vertical Top Hat	35mm Vertical Top Hat	35mm Vertical Top Hat
	9mm Fibre Cement	9mm Fibre Cement	9mm Fibre Cement	9mm Fibre Cement
<b>Total</b>	<b>68mm</b>	<b>76mm</b>	<b>81mm</b>	<b>106mm</b>
<b>Hebel</b>				
	15mm Batten	24mm Top Hat	35mm Top Hat	24mm Top Hat
	PowerPanel <sup>50</sup>	PowerPanel <sup>50</sup>	PowerPanel <sup>50</sup>	PowerPanel <sup>XL</sup>
<b>Total</b>	<b>65mm</b>	<b>74mm</b>	<b>85mm</b>	<b>99mm</b>

## Detail Notes

- The details are suitable for steel and timber framing, refer to the respective system Design and Installation Guide for more information including specific fixings, spacing and load limits.
- If a Cemintel Express Joint system is used with a horizontal top hat other than H515 (15mm) as covered in the system guide, then the project engineer is required to design the top hat spacing and its fixing to the frame. The horizontal top hat is to have a minimum BMT of 1.15mm.
- If packing is required between top hat and framing, the project engineer is required to consider it in their design.
- Packing up to 9mm can be used between the frame and top hats for the Hebel systems, provided the Hebel panels are supported at the base.
- The wind pressure limit of the junction will be limited by the lower value of either system in the detail. Refer to the system guide or CodeMark for weather-tightness performance limits.

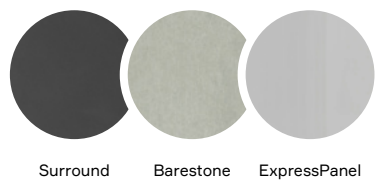
## IMPORTANT INFORMATION

The information in this technical detail is given as a guide and is intended for use in relation to the relevant Cemintel and Hebel products only. The specific joint / junction detail must be reviewed in conjunction with the relevant Cemintel and Hebel Design & Installation guides, current at the time of purchase, and any other relevant Cemintel and Hebel technical resources.

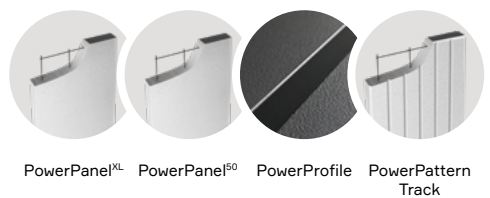


**Cemintel**

**Hebel**

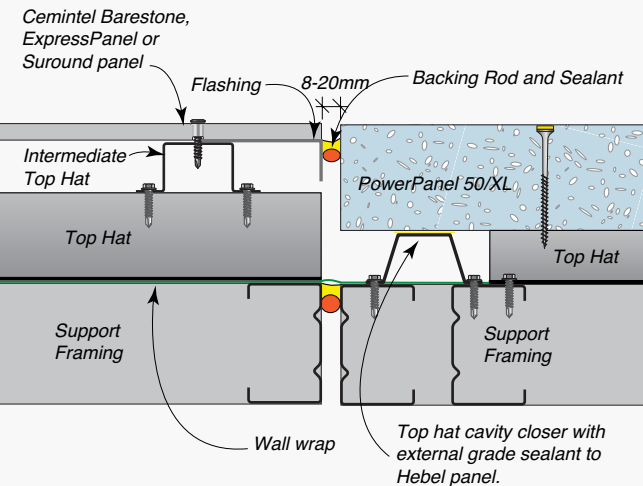


+



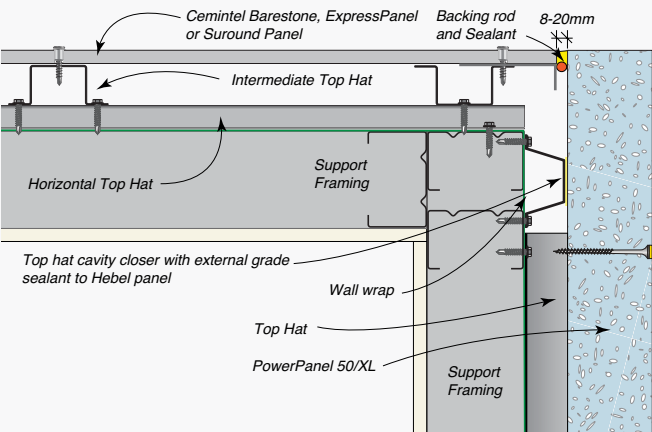
**Fig 2.1 Vertical Joint**

Cemintel Express Joint Systems to Hebel | Top view



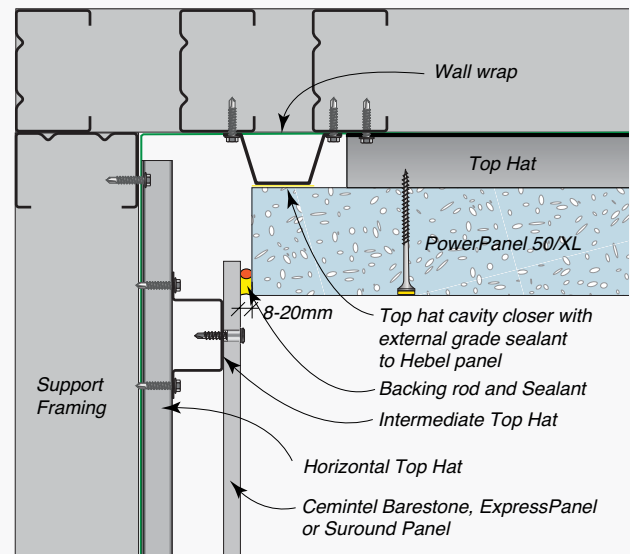
**Fig 2.2 External Corner**

Cemintel Express Joint Systems to Hebel | Top view



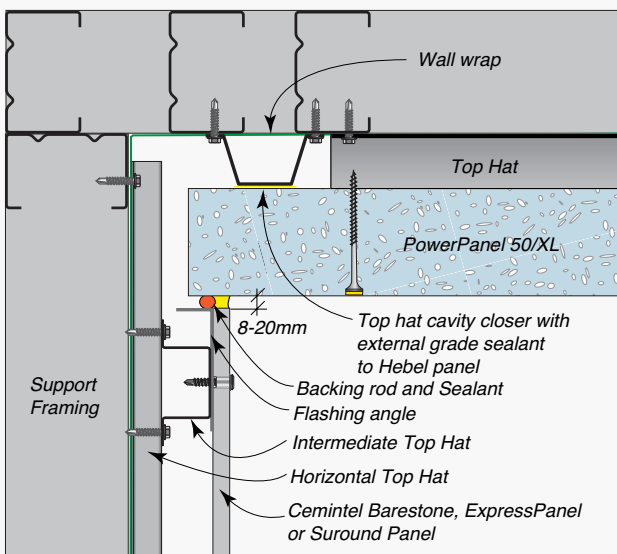
**Fig 2.3 Internal Corner (Option 1)**

Cemintel Express Joint Systems to Hebel | Top view



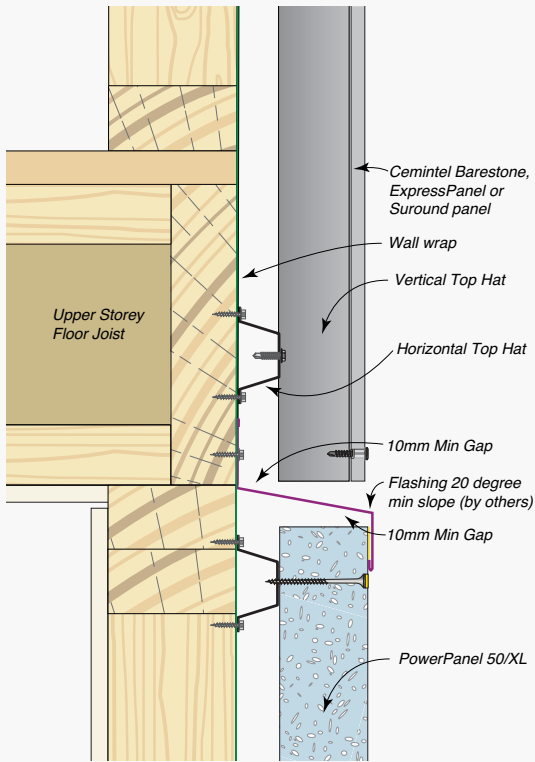
**Fig 2.4 Internal Corner (Option 2)**

Cemintel Express Joint Systems to Hebel | Top view



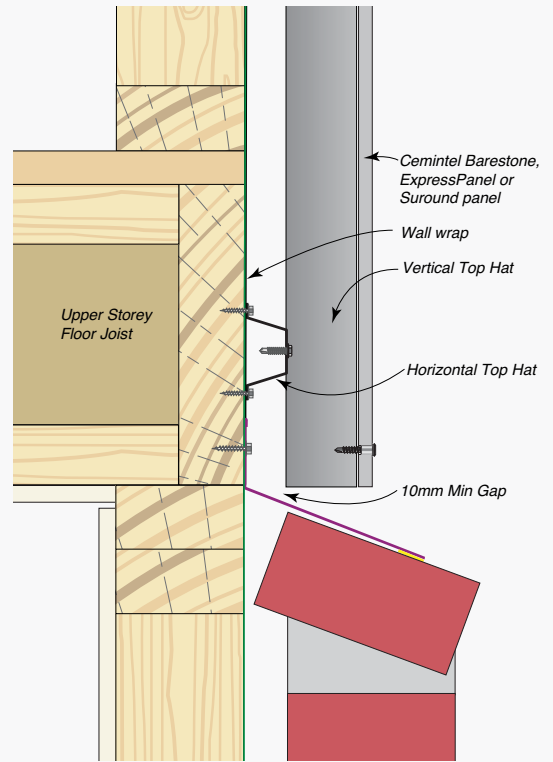
**Fig 2.5 Horizontal Joint**

Cemintel Express Joint Systems to Hebel | Side view



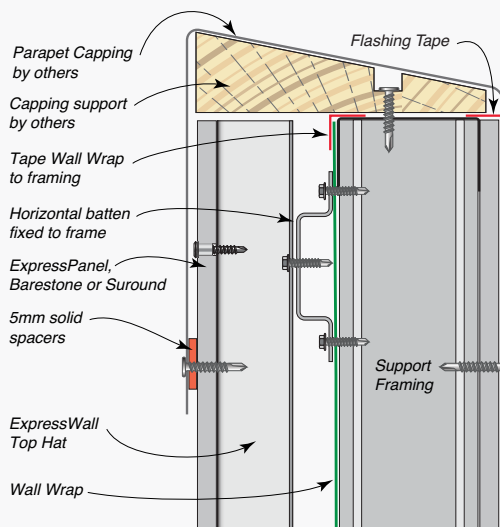
**Fig 2.6 Horizontal Joint**

Cemintel Express Joint Systems to Masonry | Side view



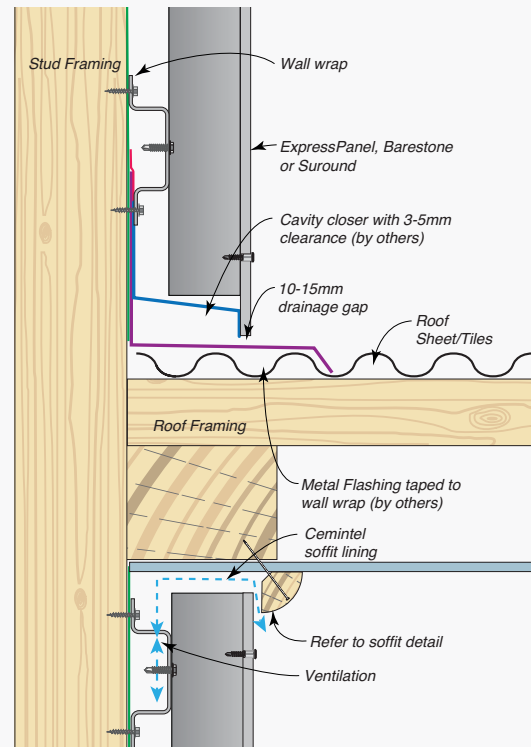
**Fig 2.7 Parapet Junction**

Cemintel Express Joint Systems | Side view



**Fig 2.8 Porch and Flat Roof Junction**

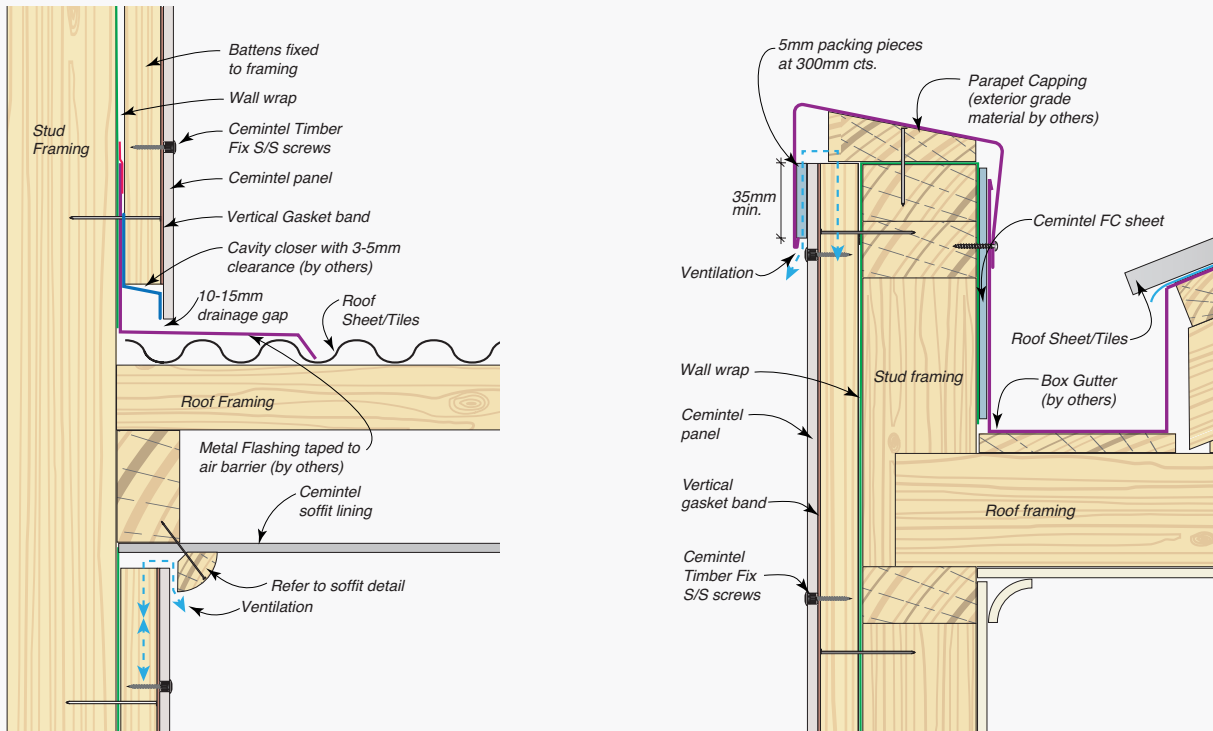
Cemintel Express Joint Systems | Side view





**Fig 2.9 Porch and Roof Junction**

Cemintel Express Joint Systems on timber battens | Side views





# Cemintel Weatherboards & Planks to Hebel & Masonry

<b>Cemintel</b>	+	<b>Hebel</b>
Balmoral Weatherboards Scarborough Weatherboards Headland Weatherboards Smooth Plank		PowerPanel <sup>XL</sup> PowerPanel <sup>50</sup> PowerProfile PowerPattern Track

This table highlights 4 different combinations of Cemintel and Hebel systems, with each column of the table as a combination. The columns nominate the particular top hat or batten sizes which allow the outside surface of the Cemintel and Hebel to systems to align the best. If surface alignment is not required then other top hats or battens from the respective system guide can be used.

<b>Cemintel</b>				
	35mm Batten/ Top Hat	45mm Batten/ Top Hat	50mm Top Hat	50mm Top Hat
	32mm Fibre Cement	32mm Fibre Cement	32mm Fibre Cement	32mm Fibre Cement
<b>Total</b>	<b>67mm</b>	<b>77mm</b>	<b>82mm</b>	<b>82mm</b>
<b>Hebel</b>				
	15mm Batten	24mm Top Hat	35mm Top Hat	24mm Top Hat
	PowerPanel <sup>50</sup>	PowerPanel <sup>50</sup>	PowerPanel <sup>50</sup>	PowerPanel <sup>XL</sup>
<b>Total</b>	<b>65mm</b>	<b>74mm</b>	<b>85mm</b>	<b>99mm</b>

## Detail Notes

1. The details are suitable for steel and timber framing, refer to the respective system Design and Installation Guide for more information including specific fixings, spacing and load limits.
2. The Balmoral weatherboards detail can be replaced with Scarborough Weatherboards, Headland Weatherboards and Smooth Plank. Refer to the respective system design and installation guide for more information including specific fixings, spacing and load limits.
3. There are options for structural and non-structural battens and top hats. Refer to the respective system guide and Cemintel Facades & Cladding Design Guide.
4. Packing up to 9mm can be used between the frame and top hats for the Hebel systems, provided the Hebel panels are supported at the base.
5. The wind pressure limit of the junction will be limited by the lower value of either system in the detail. Refer to the system guide or CodeMark for weather-tightness performance limits.

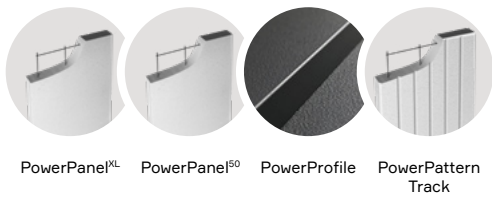
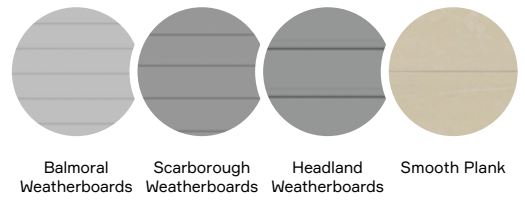
## IMPORTANT INFORMATION

The information in this technical detail is given as a guide and is intended for use in relation to the relevant Cemintel and Hebel products only. The specific joint / junction detail must be reviewed in conjunction with the relevant Cemintel and Hebel Design & Installation guides, current at the time of purchase, and any other relevant Cemintel and Hebel technical resources.



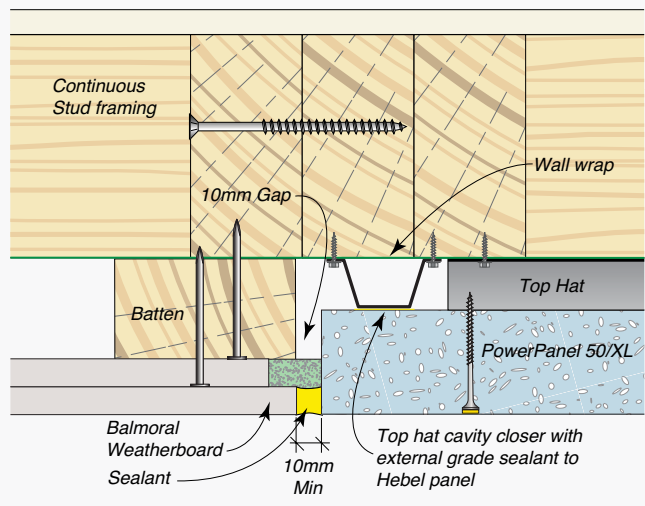
**Cemintel**

**Hebel**



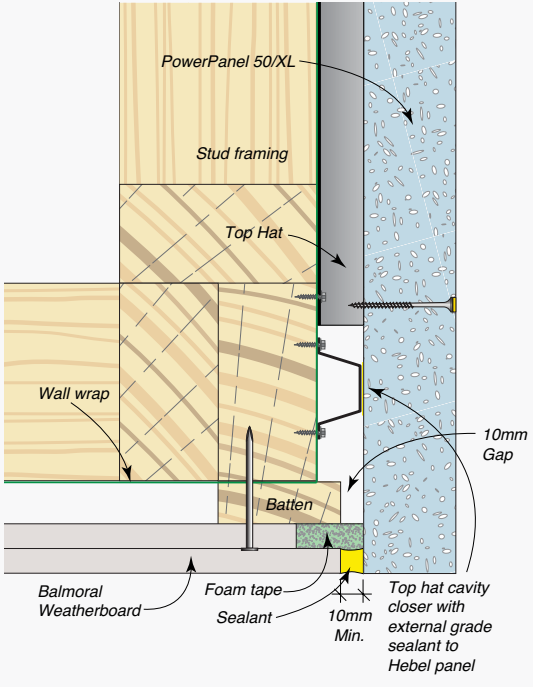
**Fig 3.1 Vertical Joint**

Weatherboards & Plank to Hebel | Top view



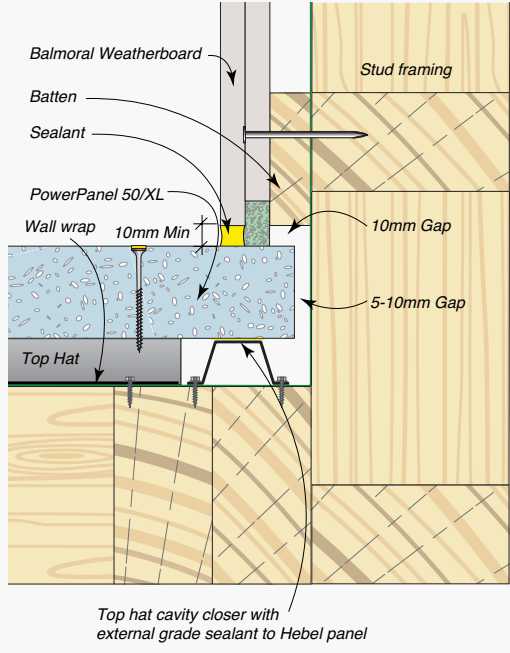
**Fig 3.2 External Corner**

Weatherboards & Plank to Hebel | Top view



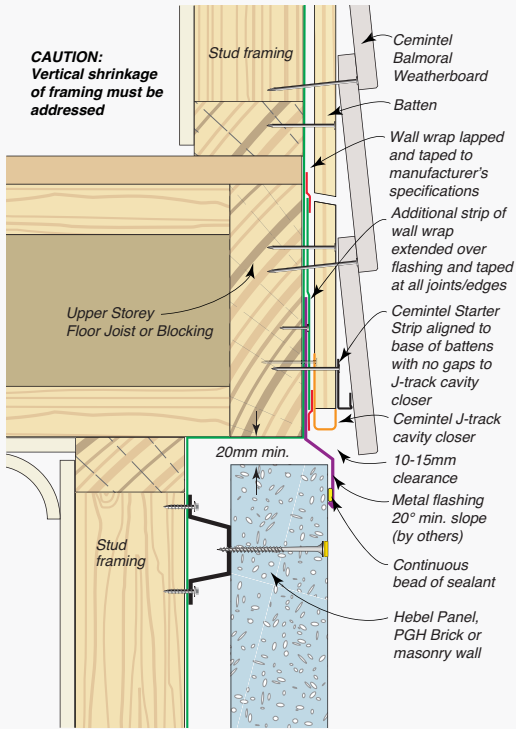
**Fig 3.3 Internal Corner**

Weatherboards & Plank to Hebel | Top view



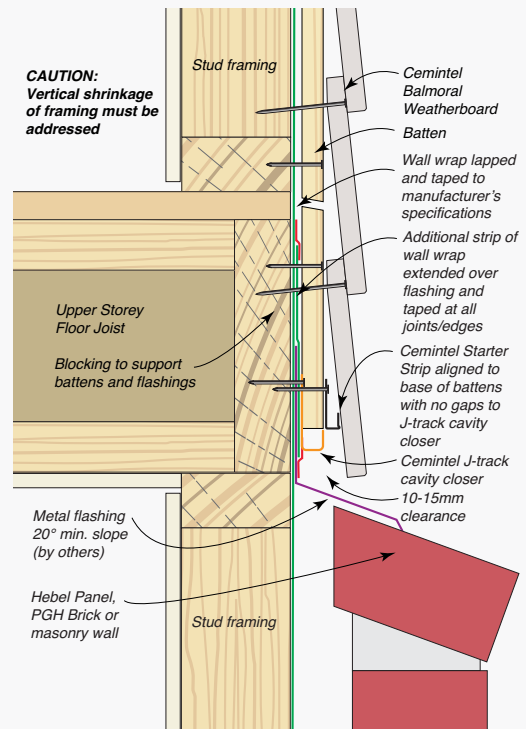
**Fig 3.4 Horizontal Joint**

Weatherboards & Planks to Hebel | Side view



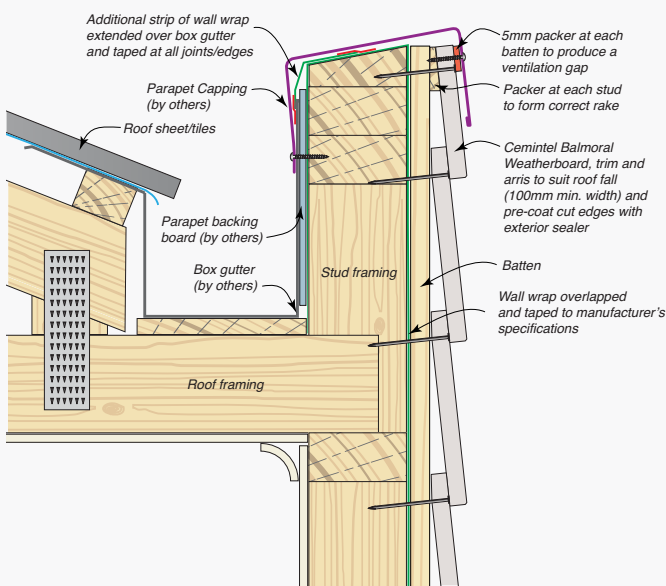
**Fig 3.5 Horizontal Joint**

Weatherboards & Planks to Masonry | Side view



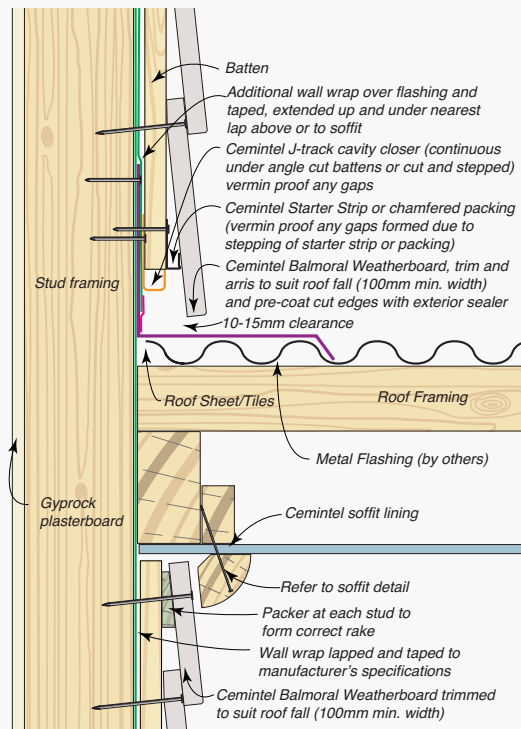
**Fig 3.6 Parapet and Roof Junction Detail**

Weatherboards & Plank | Side view



**Fig 3.7 Porch and Flat Roof Junction**

Weatherboards & Plank | Side view







# Hebel to Masonry & Cemintel Cladding

## Cemintel

Edge Cladding  
SimpleLine Cladding  
Aspect Cladding  
Mosaic Cladding  
Texture Base Sheet  
Cladding Sheet



## Hebel

PowerPanel<sup>XL</sup>  
PowerPanel<sup>50</sup>  
PowerProfile  
PowerPattern Track

### Detail Notes

1. The details are suitable for steel and timber framing, refer to the respective system Design and Installation Guide for more information including specific fixings, spacing and load limits.
2. The Edge Cladding / SimpleLine Cladding detail can be replaced with Mosaic Cladding, Aspect Cladding, Texture Base Sheet and Cladding Sheet. Refer to the respective system Design and Installation Guide for more information including specific fixings, spacing and load limits.
3. There are options for structural and non-structural battens and top hats. Refer to the respective system guide and Cemintel Facades & Cladding Design Guide. Allow for 35mm structural battens for the cladding and 35mm top hat for the Hebel for maximum reveal depth.
4. Packing up to 9mm can be used between the frame and top hats for the Hebel systems, provided the Hebel panels are supported at the base.
5. The wind pressure limit of the junction will be limited by the lower value of either system in the detail. Refer to the system guide or CodeMark for weather-tightness performance limits.

### IMPORTANT INFORMATION

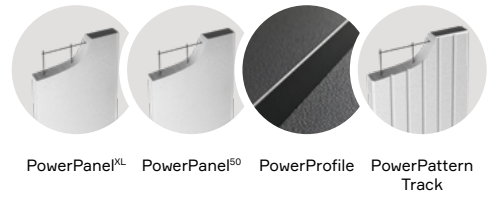
The information in this technical detail is given as a guide and is intended for use in relation to the relevant Cemintel and Hebel products only. The specific joint / junction detail must be reviewed in conjunction with the relevant Cemintel and Hebel Design & Installation guides, current at the time of purchase, and any other relevant Cemintel and Hebel technical resources.

**Cemintel**

**Hebel**

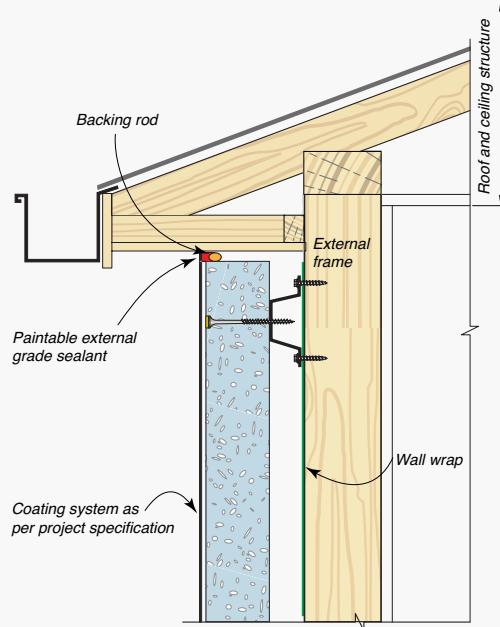


+



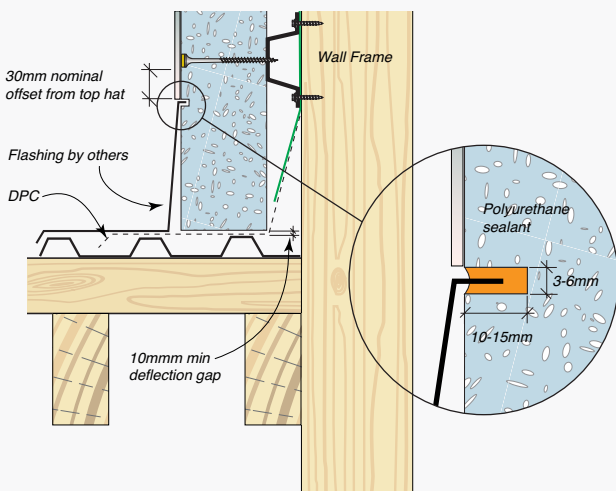
**Fig 4.1 Roof & Eaves Junction Hebel**

Side view



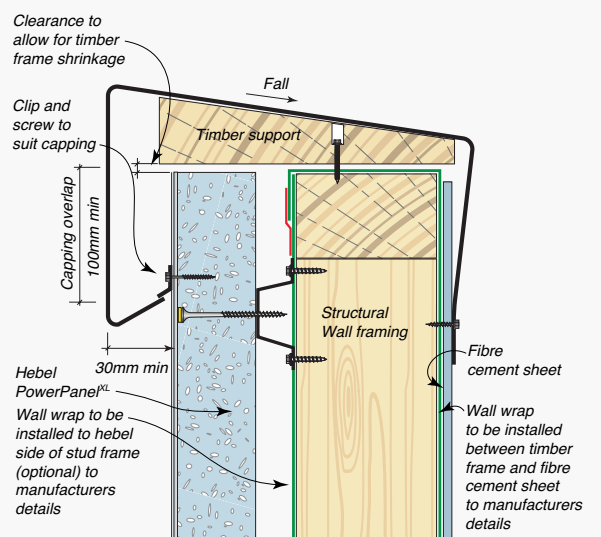
**Fig 4.2 Porch & Flat Junction Hebel**

Side view



**Fig 4.3 Parapet Junction Hebel**

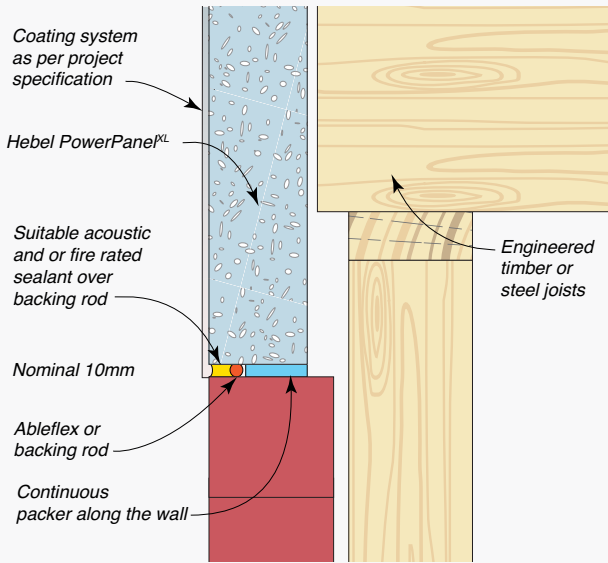
Side view





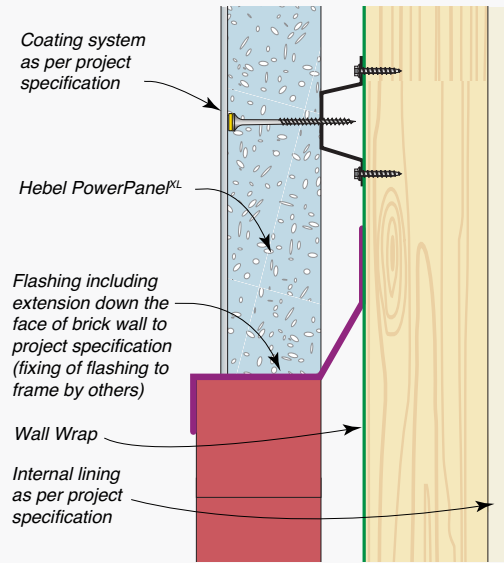
**Fig 4.4 Horizontal Control (Option 1)**

Hebel to Masonry | Side view



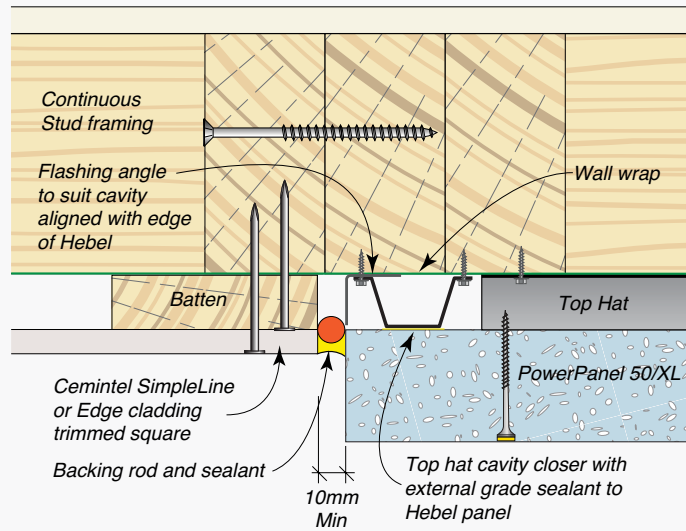
**Fig 4.5 Horizontal Control (Option 2)**

Hebel to Masonry | Side view



**Fig 4.6 Vertical Joint**

Cemintel Cladding to Hebel | Top view





# Cemintel Cladding to Territory

## Cemintel

- |                     |                                   |
|---------------------|-----------------------------------|
| Edge Cladding       | Territory Woodlands               |
| SimpleLine Cladding | Territory Quarry                  |
| Aspect Cladding     | Territory Ridge                   |
| Mosaic Cladding     | Territory Brick (horizontal only) |
| Texture Base Sheet  |                                   |
| Cladding Sheet      |                                   |

### Detail Notes

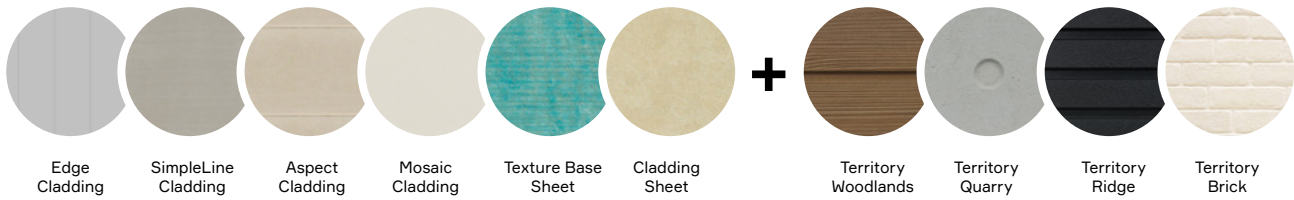
1. The details are suitable for steel and timber framing, refer to the respective system Design and Installation Guide for more information including specific fixings, spacing and load limits.
2. If a Territory system is used with top hats, the project engineer is required to design the top hat spacing and fixing to the frame. Note for Horizontal Territory, the horizontal top hats must be at 455mm centres and 1.15mm BMT min.
3. If packing is required between top hat and framing, the project engineer is required to consider it in their design.
4. The Edge Cladding / SimpleLine Cladding detail can be replaced with Mosaic Cladding, Aspect Cladding, Texture Base Sheet and Cladding Sheet. Refer to the respective system Design and Installation Guide for more information including specific fixings, spacing and load limits.
5. There are options for structural and non-structural battens and top hats. Refer to the respective system guide and Cemintel Facades Cladding Design Guide.
6. The wind pressure limit of the junction will be limited by the lower value of either system in the detail. Refer to the system guide or CodeMark for weather-tightness performance limits.

### IMPORTANT INFORMATION

The information in this technical detail is given as a guide and is intended for use in relation to the relevant Cemintel and Hebel products only. The specific joint / junction detail must be reviewed in conjunction with the relevant Cemintel and Hebel Design & Installation guides, current at the time of purchase, and any other relevant Cemintel and Hebel technical resources.

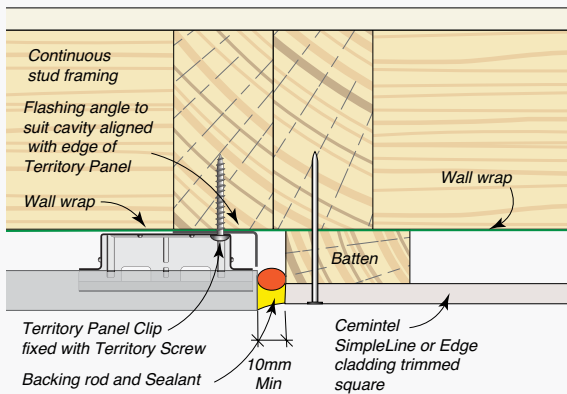


# Cemintel



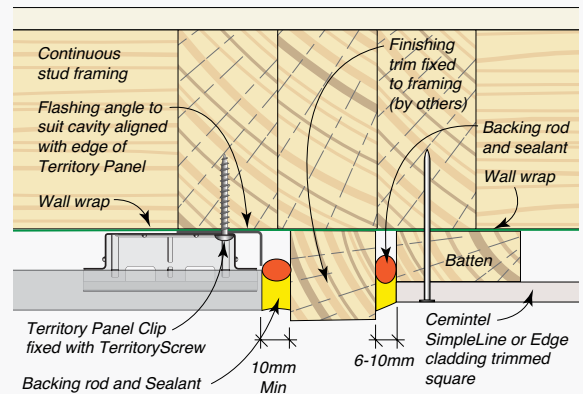
**Fig 5.1 Vertical Joint**

Cemintel Cladding to Horizontal Territory | Top view



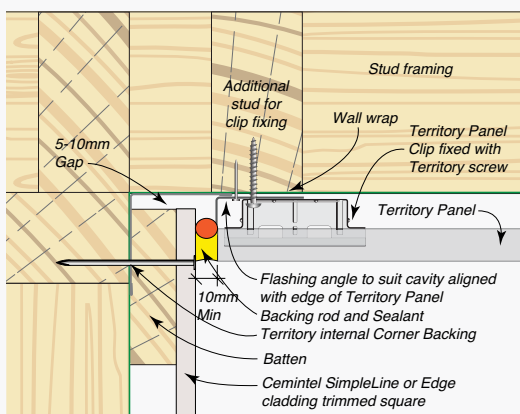
**Fig 5.2 Vertical Joint**

Cemintel Cladding to Horizontal Territory (with Trim) | Top view



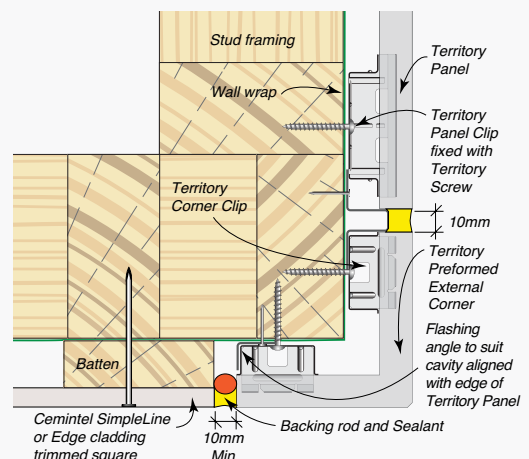
**Fig 5.3 Internal Corner**

Cemintel Cladding to Horizontal Territory | Top view



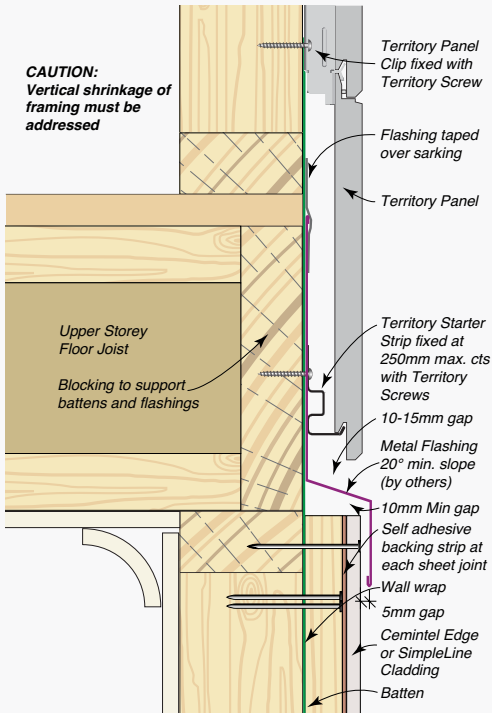
**Fig 5.4 External Corner**

Cemintel Cladding to Horizontal Territory | Top view



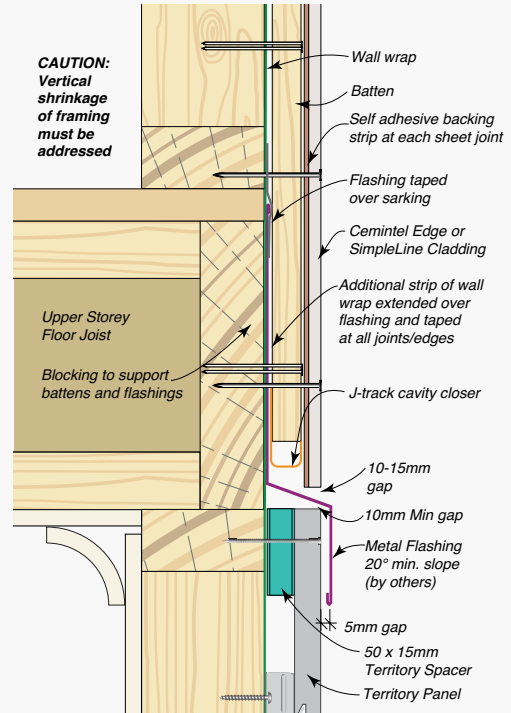
**Fig 5.5 Horizontal Joint**

Cemintel Cladding to Horizontal Territory (above) | Side view



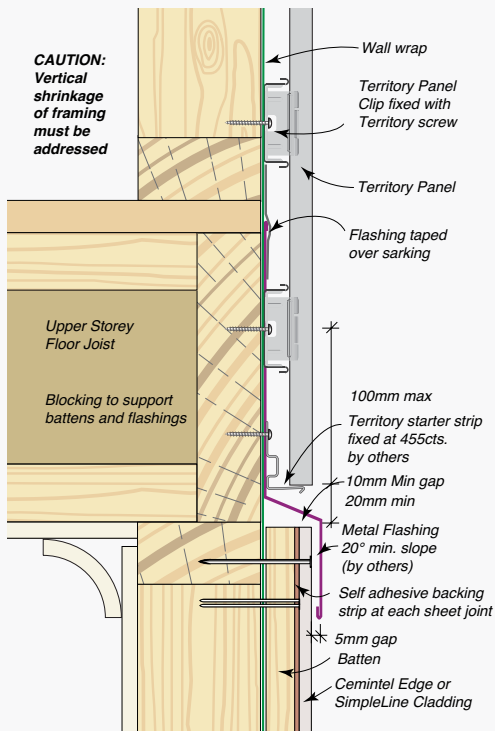
**Fig 5.6 Horizontal Joint**

Cemintel Cladding to Horizontal Territory (below) | Side view



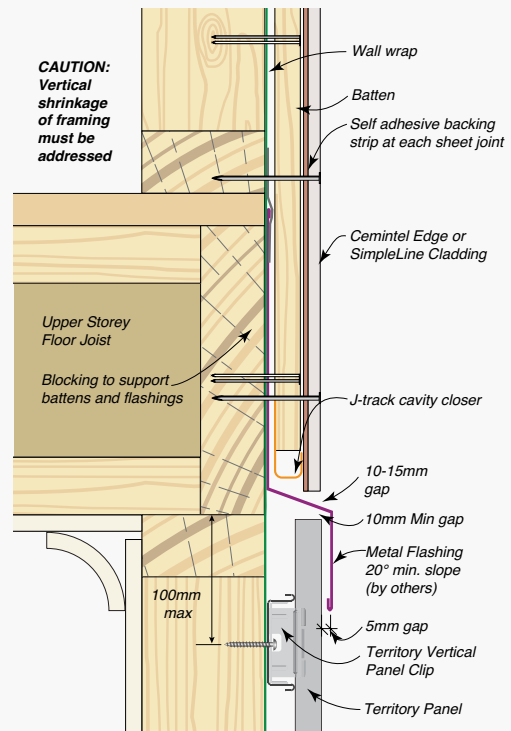
**Fig 5.7 Horizontal Joint**

Cemintel Cladding to Vertical Territory (above) | Side view



**Fig 5.8 Horizontal Joint**

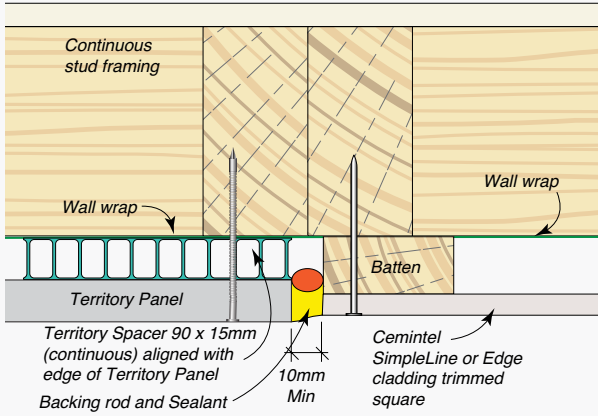
Cemintel Cladding to Vertical Territory (below) | Side view





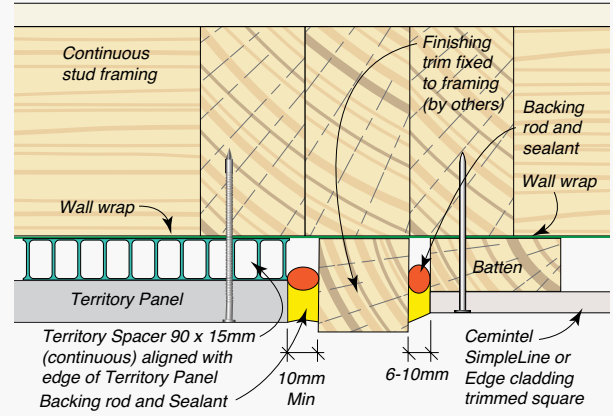
**Fig 5.9 Vertical Joint**

Cemintel Cladding to Vertical Territory | Top view



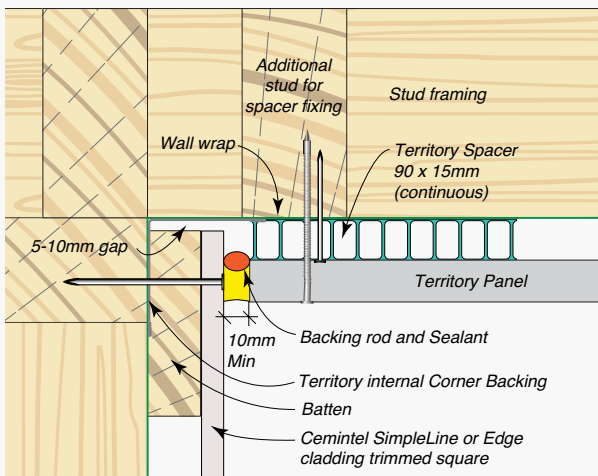
**Fig 5.10 Vertical Joint**

Cemintel Cladding to Vertical Territory (with Trim) | Side view



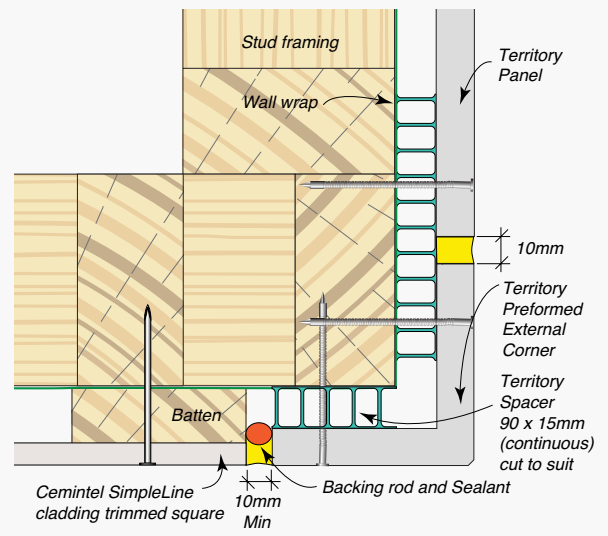
**Fig 5.11 Internal Corner**

Cemintel Cladding to Vertical Territory | Side view



**Fig 5.12 External Corner**

Cemintel Cladding to Vertical Territory | Top view





Cemintel Balmoral  
Weatherboards

*Selected imagery has been computer generated and may also vary from actual product.*

## Cemintel Cladding to Weatherboards & Plank

### Cemintel

Edge Cladding  
SimpleLine Cladding  
Aspect Cladding  
Mosaic Cladding  
Texture Base Sheet  
Cladding Sheet

Balmoral Weatherboards  
Scarborough Weatherboards  
Headland Weatherboards  
Smooth Plank

### Detail Notes

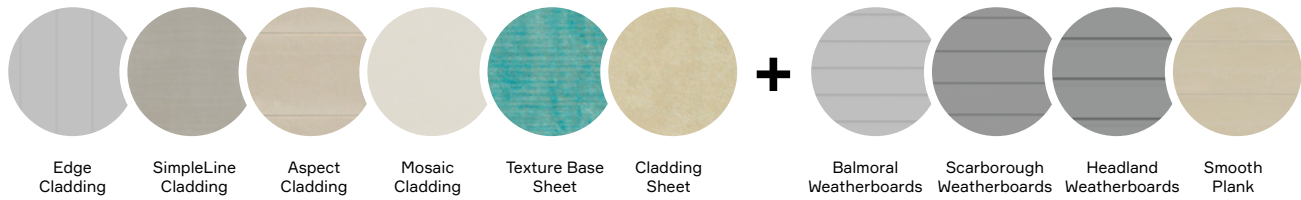
1. The details are suitable for steel and timber framing, refer to the respective system Design and Installation Guide for more information including specific fixings, spacing and load limits.
2. The Balmoral Weatherboards detail can be replaced with Scarborough Weatherboards, Headland Weatherboards and Smooth Plank and Plank. Refer to the respective system design and installation guide for more information including specific fixings, spacing and load limits.
3. The Edge Cladding / SimpleLine Cladding detail can be replaced with Mosaic Cladding, Aspect Cladding, Texture Base Sheet and Cladding Sheet. Refer to the respective system Design and Installation Guide for more information including specific fixings, spacing and load limits.
4. There are options for structural and non-structural battens and top hats. Refer to the respective system guide and Cemintel Facades & Cladding Design Guide.
5. The wind pressure limit of the junction will be limited by the lower value of either system in the detail. Refer to the system guide or Codemark for weather-tightness performance limits.

### IMPORTANT INFORMATION

The information in this technical detail is given as a guide and is intended for use in relation to the relevant Cemintel and Hebel products only. The specific joint/junction detail must be reviewed in conjunction with the relevant Cemintel and Hebel Design & Installation guides, current at the time of purchase, and any other relevant Cemintel and Hebel technical resources.

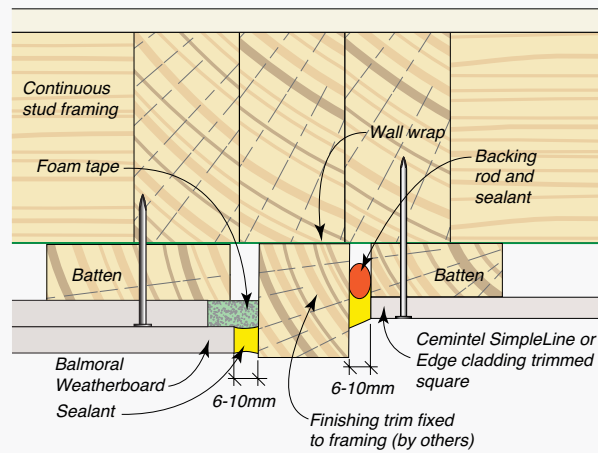


## Cemintel



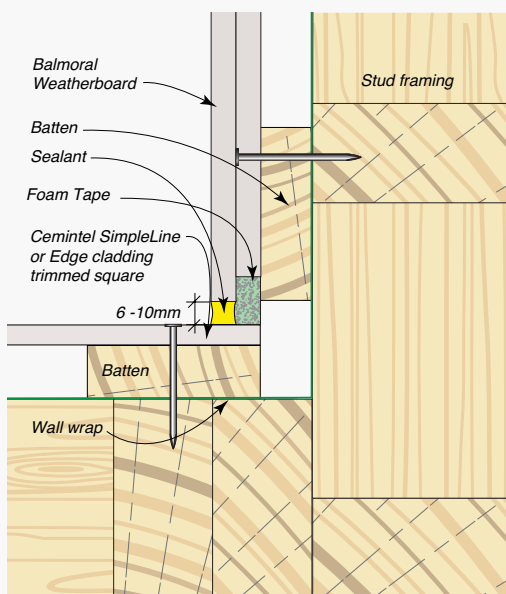
**Fig 6.1 Vertical Joint**

Cemintel Cladding to Weatherboards & Planks (with Trim) | Top view



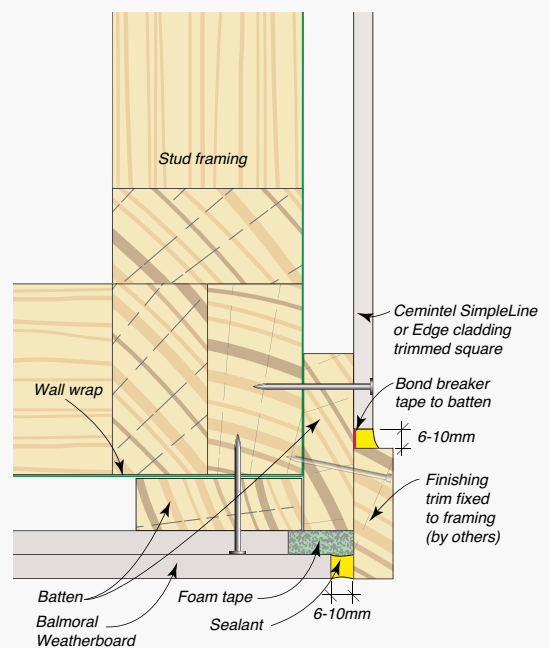
**Fig 6.2 Internal Corner**

Cemintel Cladding to Weatherboards & Planks | Top view



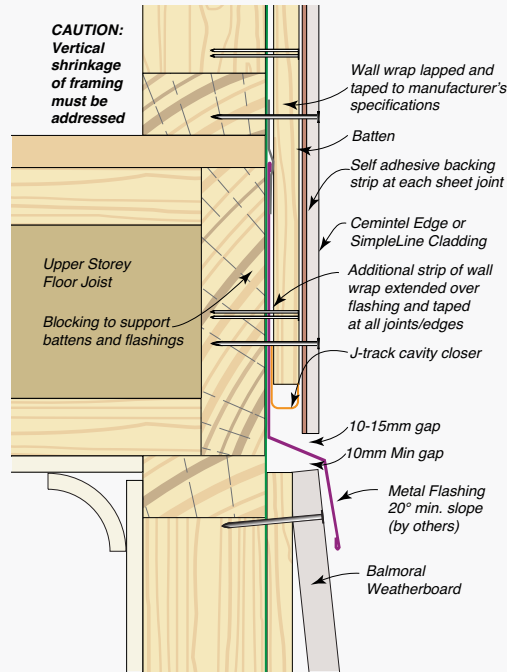
**Fig 6.3 External Corner**

Cemintel Cladding to Weatherboards & Planks | Top view



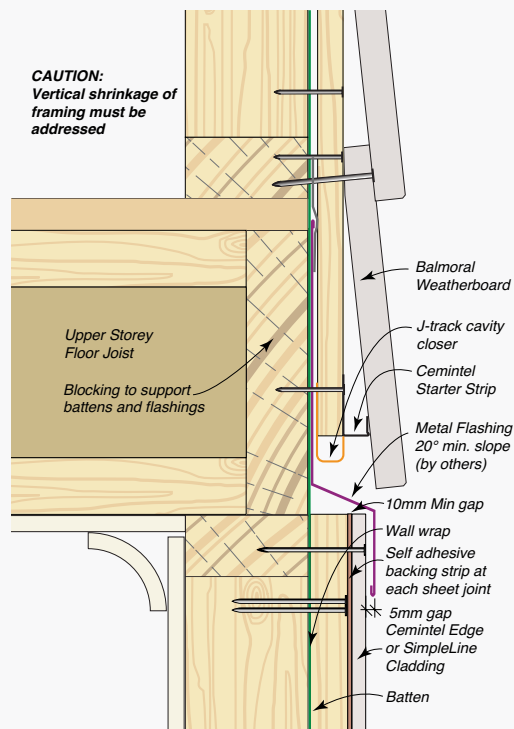
**Fig 6.4 Horizontal Joint**

Cemintel Cladding to Weatherboards & Planks (below) | Side view



**Fig 6.5 Horizontal Joint**

Cemintel Cladding to Weatherboards & Planks (above) | Side view





# Helpful resources.



## Working safely.

Your health and safety are the number one priority. It's important to understand how to work safely with Cemintel and Hebel products to minimise risks. Ensure you always prepare ahead when handling, lifting, and cutting Cemintel and Hebel products.

[Working safely with Cemintel](#)



[Working safely with Hebel](#)



## Design & Installation guides.

Cemintel and Hebel offer a range of Design and Installation guides to ensure the best outcomes when working with these products. For all relevant technical guides, refer to Cemintel and Hebel's technical resources.

[Cemintel technical resources](#)



[Hebel technical resources](#)



## Technical Support.

Cemintel and Hebel have a team of technical experts ready to assist you with your project. They can provide technical assistance over the phone or on-site support during installation.

**Phone:** 1300 712 896

**Email:** [info@csr.com.au](mailto:info@csr.com.au)

Information presented in this document is supplied in good faith and to the best of our knowledge at the time of preparation. Products are subject to natural variation as part of the manufacturing process and raw materials used and may vary from actual product in regard to colour and surface finish. Selected imagery has been computer generated and may also vary from actual product. The provision of this information should not be construed as a recommendation to use any of our products in violation of any patent rights or in breach of any statute or regulation. Users are advised to make their own determination as to the suitability of this information in relation to their particular purpose or specific circumstances. Since the information contained in this document may be applied under conditions beyond our control, no responsibility can be accepted by Hebel, or its staff for any loss or damage caused by any person acting or refraining from action as a result of misuse of this information.

Hebel® is a registered trademark of the Xella group. CSR Building Products Ltd is an exclusive licensee of Xella. CSR Hebel is a business of CSR Building Products Ltd. ABN 55 008 631 356. PowerPattern™ and PowerProfile™ and PowerPanelXL are registered trademarks of CSR Building Products Limited. COLORBOND® and the ® colour names are registered trademarks and ™ colour names are trademarks of BlueScope Steel Limited.

