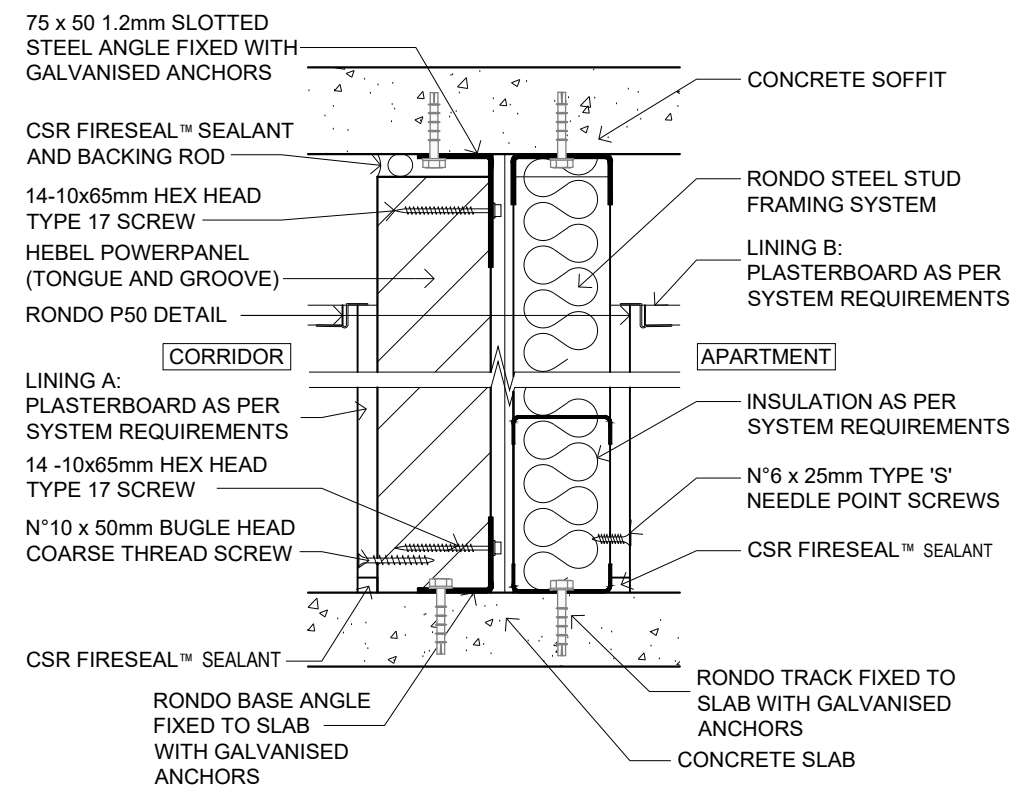
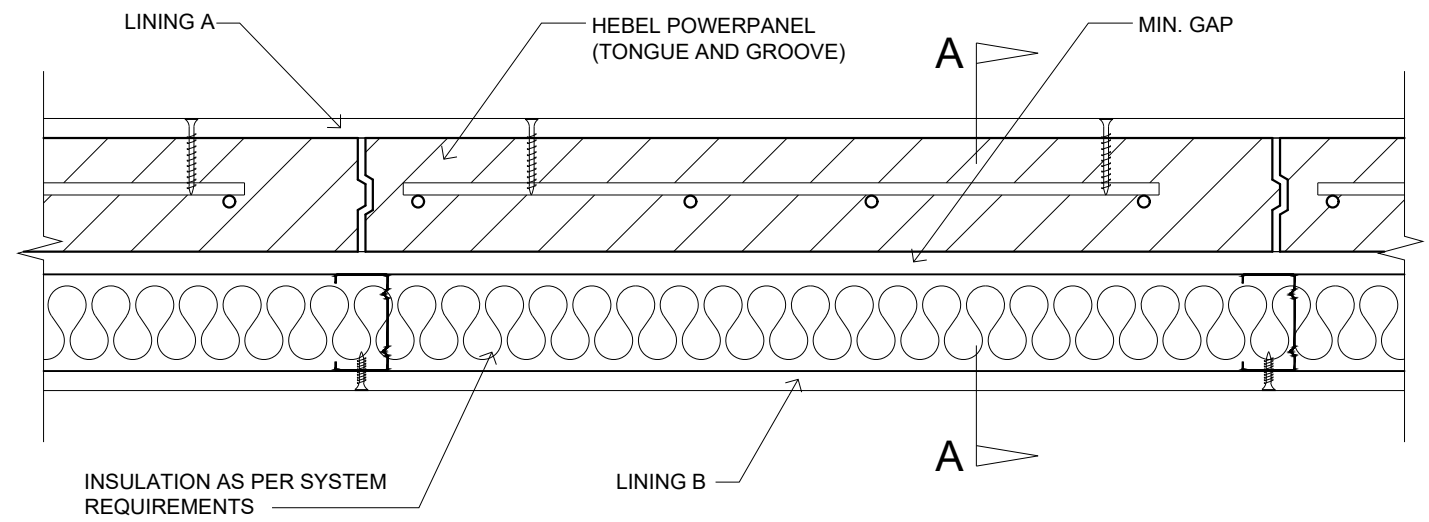


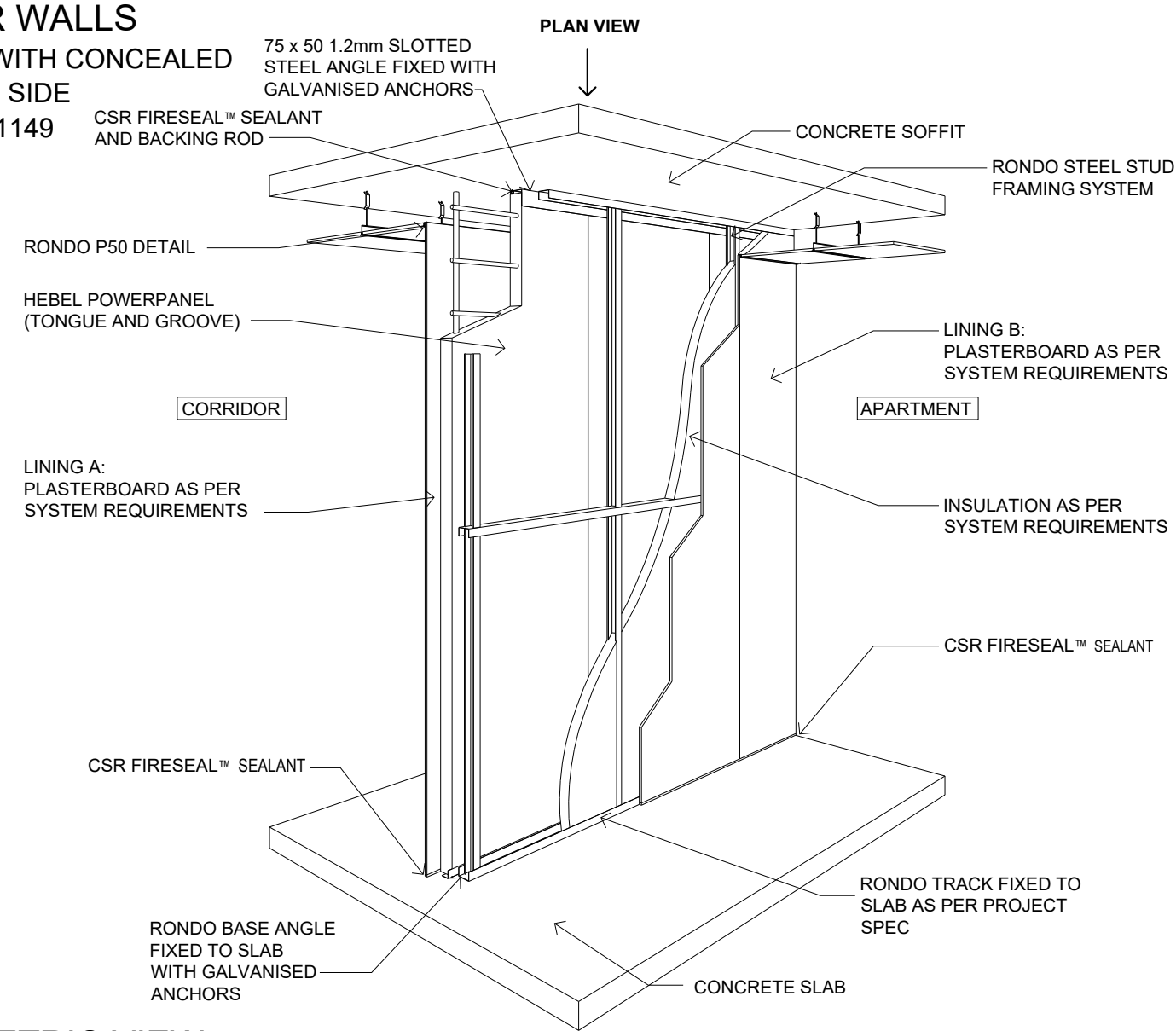
HEBEL CORRIDOR WALLS
FOR MAXIMUM FLOOR SPACE WITH CONCEALED
SERVICES ON ONE SIDE
CSR21148 - CSR21149



VERTICAL CROSS SECTION DETAIL A-A



DETAIL PLAN VIEW



ISOMETRIC VIEW
NTS

CORRIDOR WALL									
CODE	APPLICATION	WALL THICKNESS	WALL HEIGHT 'H'	FRL (B)	R _w	SYSTEM COMPONENT VARIATIONS			
						LINEING A	MIN. GAP	INSULATION (A)	LINEING B
CSR21148	DRY TO DRY	180mm	UP TO 3.3m HIGH	-/90/90 FOR WALL HEIGHTS UP TO 3.3m	58	13mm GYPROCK CD	15mm	50mm BRADFORD ACOUSTIGARD 11	13mm GYPROCK CD
CSR21149	DRY TO WET	180mm	UP TO 3.3m HIGH	-/90/90 FOR WALL HEIGHTS UP TO 3.3m	59	13mm GYPROCK CD	15mm	50mm BRADFORD ACOUSTIGARD 11	13mm AQUACHEK

REFER TO DESIGN AND INSTALLATION GUIDES FOR HIGH RISE INTERTENANCY AND SERVICE WALLS (HEB 1354) FOR MORE CONSTRUCTION AND PRODUCT INFORMATION. 13mm AQUACHEK CAN BE REPLACED BY 9mm FIBRE CEMENT SHEETING AND ACHIEVE THE SAME FRL AND ACOUSTICS.

FOR WALLS > 3.3m AND ≤ 4.65m, CAGED TONGUE & GROOVE POWERPANEL CAN BE USED AND WILL ACHIEVE A FRL OF -/120/120. REFER TO DESIGN AND INSTALLATION GUIDES FOR SHAFT AND SCISSOR STAIR WALLS (HELIT 032) FOR MORE DETAILED INFORMATION.



CSR BUILDING PRODUCTS LTD
Head Office: Trinitii 3, 39 DELHI RD, NORTH RYDE NSW 2113
LOCKED BAG 1345, NORTH RYDE BC NSW 1670
A.B.N. 55 008 631 356 Ph: 1300 369 448
www.hebelaustralia.com.au



SYSTEM CODE		TITLE			
CSR21148 - 21149		HEBEL CORRIDOR WALLS			
SCALE	SHEET SIZE	DRAWN	CHECK	DATE	
				12.04.24	REVISION
1:5 @ A3	A3	ET	CW		D
	1 of 1				