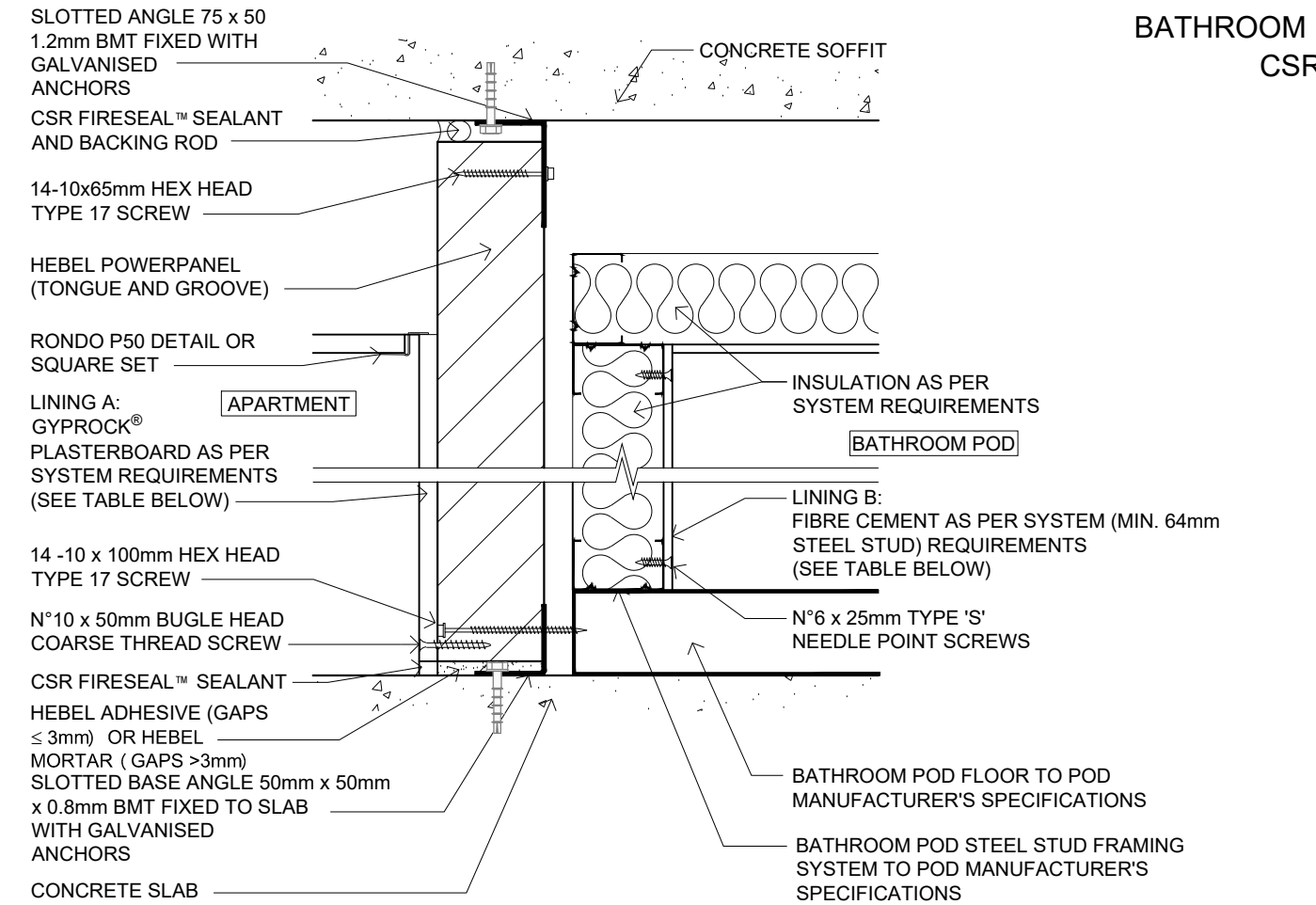
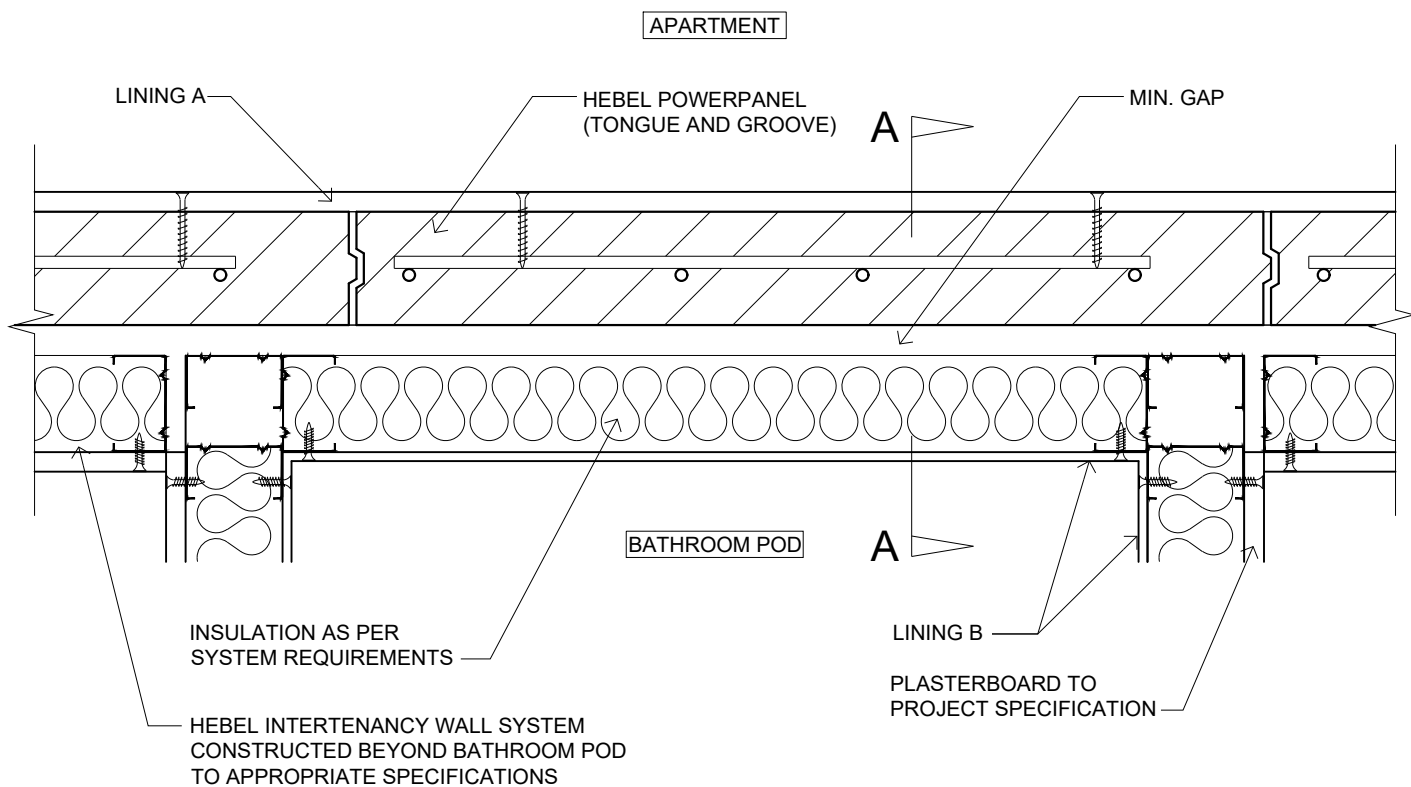


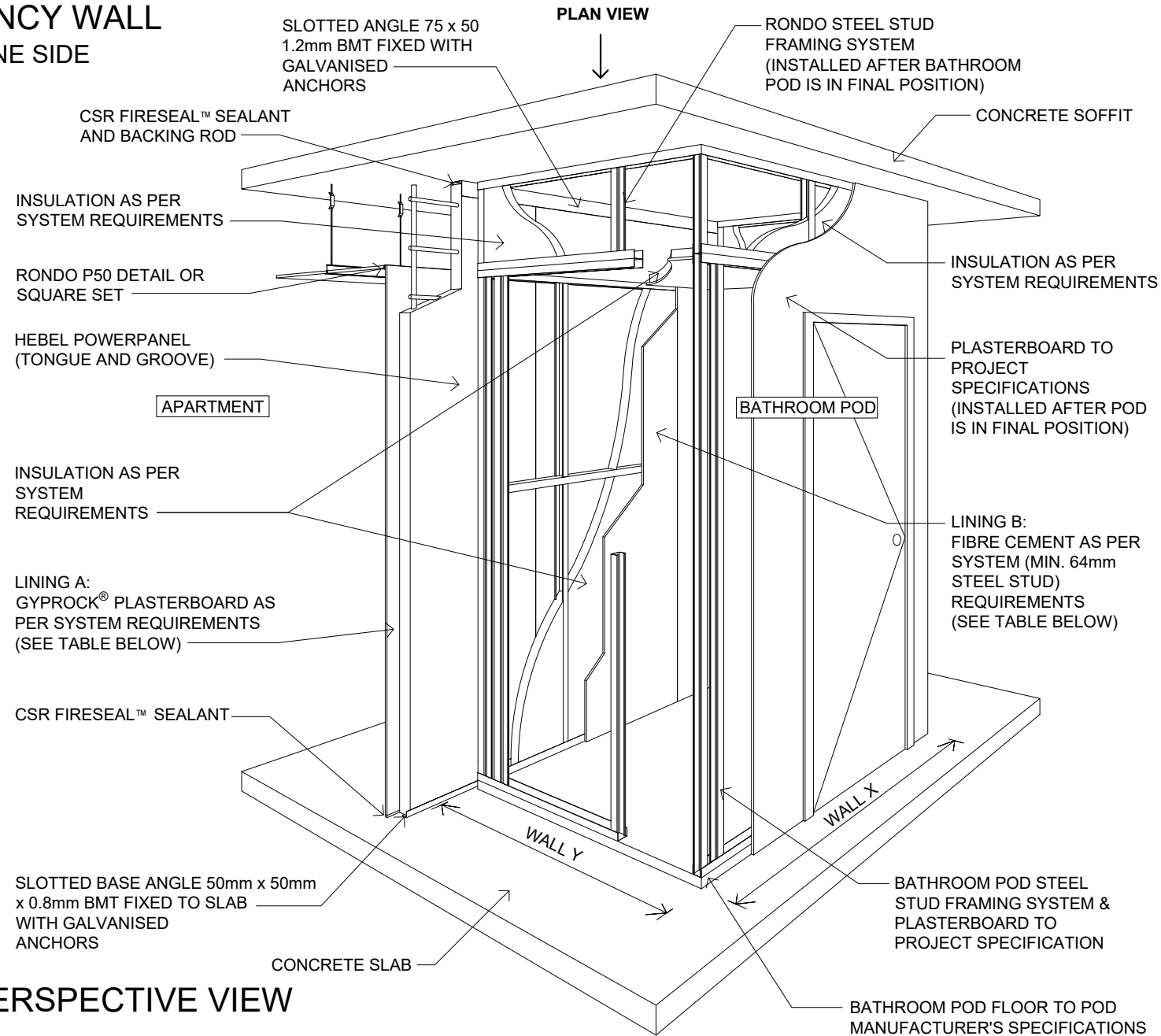
HEBEL INTERTENANCY WALL  
BATHROOM POD ONE SIDE  
CSR21177



VERTICAL CROSS SECTION DETAIL A-A



DETAIL PLAN VIEW



PERSPECTIVE VIEW

NTS

INTERTENANCY WALL									
CODE	APPLICATION	WALL WIDTH	WALL HEIGHT	FRL (A)	R <sub>w</sub> +C <sub>tr</sub> (B)	SYSTEM COMPONENT VARIATIONS			
						LINING A	MIN. GAP	INSULATION (C)	LINING B
CSR21177	APARTMENT TO BATHROOM POD	178mm	UP TO 3.3m HIGH	-/90/90 FOR WALL HEIGHTS UP TO 3.3m	≥50	13mm GYPROCK CD	20mm	75mm BRADFORD ACOUSTIGARD 11	6mm FIBRE CEMENT

- (A) FRL VALUES SHOULD BE READ IN CONJUNCTION WITH CSIRO FIRE OPINION FCO FCO-3036. FOR WALLS > 3.3m AND ≤ 4.65m, HEBEL POWERPANEL CAGED TONGUE & GROOVE WILL ACHIEVE A FRL OF -/120/120.
- (B) ACOUSTIC VALUES SHOULD BE READ IN CONJUNCTION WITH ACOUSTIC LOGIC ASSESSMENT REPORT 20151586.3/0707A/R5/GW.
- (C) WHERE BATHROOM PODS ARE INSTALLED ALONG SIDE A FACADE WALL AND ONE POD WALL FORMS PART OF THE FACADE WALL CONSTRUCTION, THE INSULATION USED IN THIS WALL MUST BE DEEMED NON-COMBUSTIBLE.

- GENERAL NOTES:
- INSULATION & PLASTERBOARD ARE REQUIRED AROUND BATHROOM POD PERIMETER TO CONCRETE SOFFIT.
  - FOR MORE CONSTRUCTION AND PRODUCT INFORMATION REFER TO HEBEL DESIGN AND INSTALLATION GUIDE FOR HIGH RISE APARTMENTS, HOTELS, STUDENT ACCOMMODATION - CORRIDOR, INTERTENANCY, SHAFT & SERVICE WALLS (HELIT117).