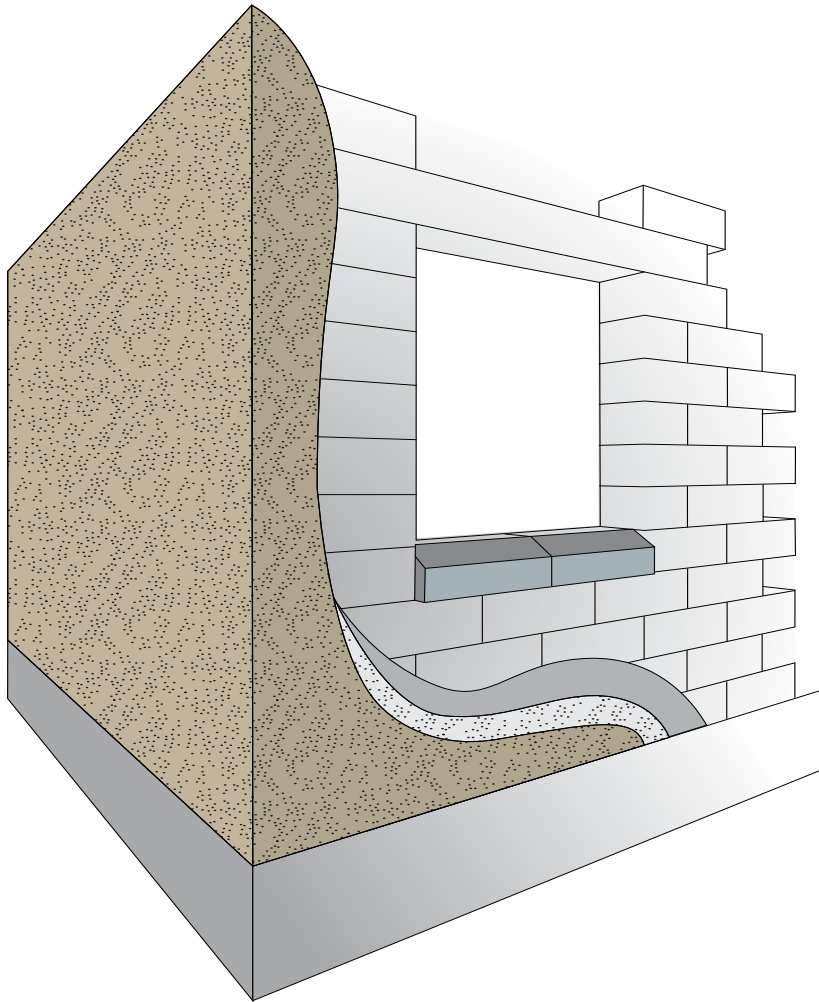


Building walls with Hebel PowerBlock



PowerBlock delivers load-bearing solid masonry qualities comparable to double brick

Solid masonry construction has long been regarded as the 'ultimate' home building method. Hebel PowerBlock is made from Autoclaved Aerated Concrete (AAC), is the ideal alternative to double brick, giving you an extremely solid construction with exceptional acoustic and thermal insulation properties to provide a more comfortable and energy efficient home.

The face size of a PowerBlock is 600mm x 200mm. External walls are typically constructed using 250mm thick Hebel PowerBlock whilst internal non-loadbearing block walls generally use a minimum 100mm PowerBlock. The large format blocks are lightweight and, forming a single wall, are rapidly installed.

Block Walls

Fire	up to 240/240/240
Thermal	R1.48 (based on 250mm Hebel PowerBlock, 550 Kg/m ³ and 3% M.C)
Block Thickness	100mm to 300mm

The unique benefits of home building with Hebel PowerBlock

- A solid load-bearing masonry home.
- Hebel PowerBlocks perform well thermally, helping to keep your house cool from the heat in summer, and keeping it warm in winter.
- Design and build freedom and flexibility – easily worked with standard power tools.
- Non-combustible – up to a four hour fire rating makes the Hebel PowerBlock System ideal for rural or bush fire prone areas.
- Enhanced design freedom can be achieved through routing and shaping. Lintels and sill blocks complement the high aesthetic appearance.

HEBEL. Better by design. Better to build with. Better for the future.



HOW TO LAY HEBEL POWERBLOCK

When installing Hebel, please refer to
Working Safely with Hebel - hebel.com.au

Shopping List

- ☐ Hebel blocks
- ☐ Poly damp proof course (DPC)
- ☐ Hebel mortar
- ☐ Hebel adhesive

Tools required

- ☐ Spirit level
- ☐ Notched trowel to match block thickness to apply Hebel adhesive
- ☐ Rubber mallet
- ☐ Sweeping brush
- ☐ Stirrer for electric drill



Step 3 - Lay Hebel Mortar for first course

Lay Hebel Mortar to get the first course of blocks straight and level.

Brush all loose particles and dust from the base, top and ends of each Hebel PowerBlock to be laid.



Step 4 - Mix Hebel Adhesive

Mix Hebel Adhesive using the directions on the bag.



Step 5 - Accurately position a Hebel PowerBlock

Accurately position a Hebel PowerBlock horizontally and tap into place with a rubber mallet, ensuring the block is level in all places.



Step 6 - Apply Hebel Adhesive

Apply Hebel Adhesive to the end of the base block using a notched trowel.



STEP-BY-STEP GUIDE:

Step 1 - Hebel Mortar for the base course bed

Use Hebel Mortar for the base course bed (a standard brickwork mortar mix is suitable).

Please note: the supporting structure is to be designed to full masonry standards by a practising engineer if building a Hebel PowerBlock wall.

Step 2 - Lay a damp proof course

Lay a damp proof course (DPC) slip joint membrane on the horizontal surfaces where the Hebel® Blocks will be laid.

This will allow for differential movement between the blocks and footings.

Install the DPC prior to the application of the Hebel Mortar.



Step 7 - Position the next block adjacent to the first block

Position the next Hebel PowerBlock adjacent to the first, and with a rubber mallet, gently tap the block end horizontally to fully close the vertical joint.

All joints should be 2-3mm.

Step 8 - Tap the second block down into the base mortar

Now tap the second block down into the base mortar, making it level with the first block.



Step 9 - Repeat

Repeat until the first course is complete.

Step 10 - Start Second course

Each Hebel PowerBlock joint of the second course must overlap the joints of the first course by at least 100mm.

Step 11 - Apply Hebel Adhesive to the topside of the first course

Apply Hebel Adhesive to the topside of the first course using a notched trowel.



Step 12 - Position the first block in the second course

Position the first block in the second course and gently tap accurately into place with a rubber mallet. All joints should be 2-3mm thick.

Step 13 - Apply Hebel Adhesive to the end of the first Hebel PowerBlock

Apply Hebel Adhesive to the end of the first Hebel PowerBlock.

Position the next block adjacent to the first, and with a rubber mallet, gently tap the block end horizontally to fully close the vertical joint.



Step 14 - Tap the top of the block until level with the previous blocks

Tap the top of the block until level with the previous blocks laid.

Step 15 - Repeat

Repeat for subsequent blocks.



Step 16 - Clean any excess adhesive off the block

Clean any excess adhesive off the block face at the end of each course, no longer than 1-2 hours after laying the first Hebel PowerBlock.



Step 17 - Patch

Large holes can be patched using Hebel Mortar.



Step 18 - Sand and render

Sand and render your project.





Strong and solid



Quality and speed



Energy efficient



Eco-friendly



Noise reduction



Fire resistant



Proven



The better way to build

For more information please call
1300 443 235 or visit www.hebel.com.au

Hebel® is a registered trademark of the Xella group. CSR Building Products Ltd is an exclusive licensee of Xella. CSR Hebel is a business of CSR Building Products Ltd ABN 55 008 631 356. CSR, PowerPanel®, PowerPattern™, PowerClad®, Hebel Block®, PowerFloor®, Hebel Floor®, PowerFence®, HighBuild®, are registered trademarks of CSR Building Products Limited.

