

There is only one Hebel



**Trusted by architects,
homeowners, builders and
installers all around Australia.**

CSR Hebel is the only manufacturer of AAC in Australia. Hebel's reputation has stood the test of time, and today continues to lead the way in fast, economic, and sustainable building solutions.

CSR

Hebel, the trusted brand



Hebel® is the trusted brand in autoclaved aerated concrete. Proudly leading the way with new products and systems to solve new challenges, Hebel provides our customers the confidence to get the job done.

Hebel is a high-performance, versatile building material known for its lightweight composition, strength, and excellent thermal and acoustic insulation.

Its sustainability credentials include reduced raw material usage and energy efficiency, making it an eco-friendly choice for modern construction. With its ease of installation and adaptability to various designs, AAC is a durable and practical solution for residential, commercial, and industrial projects.

Versatile product range

Hebel offers a wide range of high-quality products, including blocks, curves blocks, wall and floor panels. We also provide a decorative range of custom routed panels. Products are available in standard and made to order sizes. All panel products contain steel reinforcement for added strength with an anti-corrosion layer on the steel for maximum durability.



Left to right: PowerBlock® PowerFloor®, Hebel Arched Panel, Hebel Curved Block, PowerPanel^{XL}, PowerPanel⁵⁰ and PowerPattern.



Proven & compliant systems

Hebel is the only manufacturer of AAC in Australia. Backed by CSR, Hebel is supported by a team of experts to ensure your design is compliant.



Strong & solid

Hebel panels are high-performance products containing steel reinforcement for added strength with an anti-corrosion layer on the steel for maximum durability.



Quality & speed

Building with Hebel can mean faster construction times, without sacrificing on quality.



Fire resistant

Hebel is a non-combustible building material and renowned for its fire resistant properties.



Design versatility

With Hebel the design possibilities are endless with a wide range of aesthetic coating options.



Energy efficient

Hebel performs well thermally, helping to keep your house cool in summer and warm and cosy in winter.



Noise reduction

A Hebel home is a quiet one because it reduces noise transmission. When used for upper floors it can reduce sound transference between levels.



Sustainable

Hebel is made using readily available raw materials. It's also available in custom sizes reducing construction waste.

Proven systems

Designed, tested and approved for Australian conditions Hebel systems are proven in the market.



PowerPanel^{XL} - For a high quality home thats quiet and comfortable to live in

At the heart of the Hebel external wall system for houses is the Hebel PowerPanel^{XL}, a 75mm thick steel reinforced panel, directly fixed vertically to Hebel's patented perforated top hat sections.

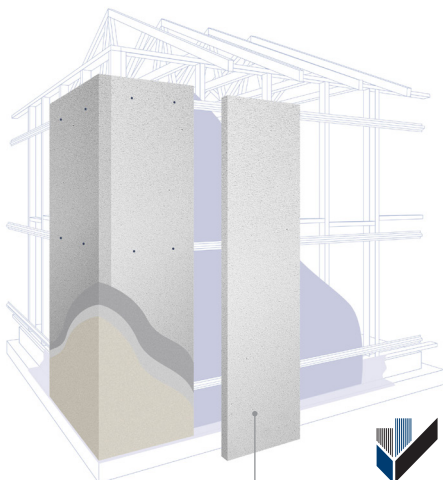
The wall is then rendered with a recommended coating system – providing a high quality, beautiful external façade to the home.

Fire rating: Up to 180/180/180 when subjected to an external fire source (FRL of wall system without construction joints).

Acoustic: Up to $R_w + C_{tr}$ 33.

Thermal: $R0.6 \text{ m}^2\cdot\text{K}/\text{W}$ for 4.0% M.C for panel only and up to $R3.8 \text{ m}^2\cdot\text{K}/\text{W}$ in wall system.

Standard panel sizes: 75mm thick x 600mm wide x 2400, 2550, 2700, 2800, 2850, 3000, 3300mm long.



Hebel PowerPanel^{XL}



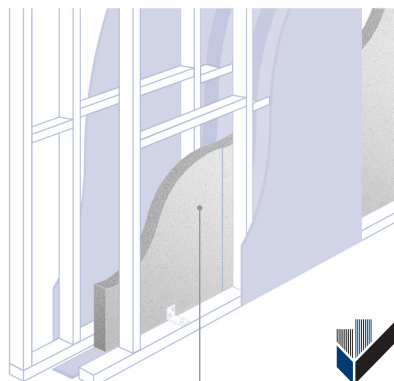
PowerPanel⁵⁰ – The smart choice for intertenancy, party and dual zero boundary walls

The Hebel PowerPanel⁵⁰ system for intertenancy, party and dual zero boundary walls consists of 50mm thick, steel-reinforced Hebel panels, fixed vertically to Hebel's patented perforated top hat sections. The walls act as a solid wall between townhouses providing protection, acoustic benefits and the peace-of-mind that comes from knowing PowerPanel⁵⁰ is one of the most effective fire barriers between residential properties.

Fire rating: Up to 90/90/90.

Acoustic: Achieves $R_w + C_{tr}$ 50 dependent on wall system configuration.

Standard panel sizes: 50mm thick x 600mm wide x 2400, 2550, 2700, 2850, 3000mm long.



Hebel PowerPanel⁵⁰



PowerFloor – the feel of a solid concrete floor without the price tag

The Hebel PowerFloor system consists of a 75mm thick steel reinforced PowerFloor panel, installed over steel or timber joists to provide an outstanding strong flooring solution for suspended ground floors or mid-floors with excellent thermal and acoustic performance.

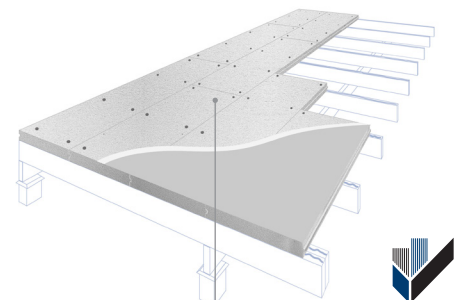
Once finished, the Hebel PowerFloor system provides a solid base for just about any floor covering.

Fire rating: Up to 90 minutes from above, up to 90 minutes from below (with approved CSR Gyprock ceiling)

Acoustic: $R_w + C_{tr}$ 50 and $L_{nw} + C_i$ 62 (with 13mm Fyrcheck ceiling system, timber flooring cover and 290mm joist depth).

Thermal: $R0.375 \text{ m}^2\cdot\text{K}/\text{W}$ for 14% M.C for panel only.

Standard panel sizes: 75mm thick x 600mm wide x 1800mm long.



Hebel PowerFloor



Support & Resources



Hebel support

CSR Hebel is here to help support you with your project, whether it's our Products and Services support team, DesignLink Technical Service team or Business Development Managers.

General enquiries

Our team of experts are focused on supporting you with your next project.

Call: 1300 443 235

DesignLink

DesignLINK is CSR's technical expertise unit. It comprises of architects, engineers, and building designers who deliver technical advice and support project specifications.

Additionally, the DesignLINK team can support complex test data and assist in the specification and detailing of major projects.

Call: 1300 712 896

Product development and innovation

Hebel's team of experts in product development and innovation, ensure we're evolving our products to meet changing demands of the industry.

Online resources

Learn more - Browse our range and technical resources and installation information, search by document type, product or segment. www.hebel.com.au

HebelPro

HebelPro is your mobile-friendly hub, built for installers. HebelPro makes it easy to access everything you need, right from your phone. Register now at installer.hebel.com.au

Installation how to videos

Check out our CSR Hebel youtube channel for our latest How to install Hebel series.

Compliance & Quality

Compliance

Compliance is central to our approach. Hebel complies with all the necessary construction code requirements, making it the ideal building material. All systems are supported by technical documentation, test reports and/or assessments. And because it's backed by CSR, there's the added value of the strength and stability of one of the industry's most established building brands.

CodeMark certification

CSR Hebel have CodeMark certificates for the following Systems.

CM40012: Low Rise Multi Residential Hebel PowerPanel AAC External Wall System

CM40014: Low Rise Multi-Residential Hebel PowerFloor System

CM40048: Hebel PowerPanel^{XL} Low Rise Multi-Residential Intertency Wall System

CM40049: Hebel Houses and Low Rise Multi Residential (PowerPanel^{XL}, PowerProfile®, PowerPattern®) External Walls System

CM40164: Low Rise Multi Residential Hebel PowerPanel⁵⁰ Intertency Wall System

CM40165: Low Rise Multi Residential Hebel PowerPanel⁵⁰ Dual Zero Boundary Wall System

CM40233: Low Rise Multi Residential Hebel® PowerPanel⁵⁰ AAC External Wall System

CM40312: Hebel® Powerpanel⁵⁰ High Rise Façade System

CM40037: Hebel® High Rise Façade Wall System

System performance & installation

We support our systems with technical information and Design & Installation Guides. Refer to Resources to learn more.

Quality control

Hebel Blocks comply with AS 3700 Masonry structures.

Hebel reinforced AAC panel products comply with Australian Standard for Reinforced Autoclaved Aerated Concrete - AS 5146.

On-site steel mesh complies with AS/NZS 4671 Steel Reinforcing Materials.

Hebel warranty

At CSR, we back our Products and Systems with Warranties, in addition to after sales support. Project Warranties can also be arranged on request.

Contact us



hebel.com.au



[csrhebel](https://www.linkedin.com/company/csrhebel)



[csrhebel](https://www.facebook.com/csrhebel)



[hebelaustralia](https://www.instagram.com/hebelaustralia)



[csrhebel](https://www.youtube.com/csrhebel)

Hebel® is a registered trademark of the Xella group. CSR Building Products Ltd is an exclusive licensee of Xella. CSR Hebel is a business of CSR Building Products Ltd ABN 55 008 631 356. CSR PowerPanel®, Hebel Block®, PowerFloor®, Hebel Floor® are registered trademarks of CSR Building Products Limited.

hebel[®]
The better way to build

