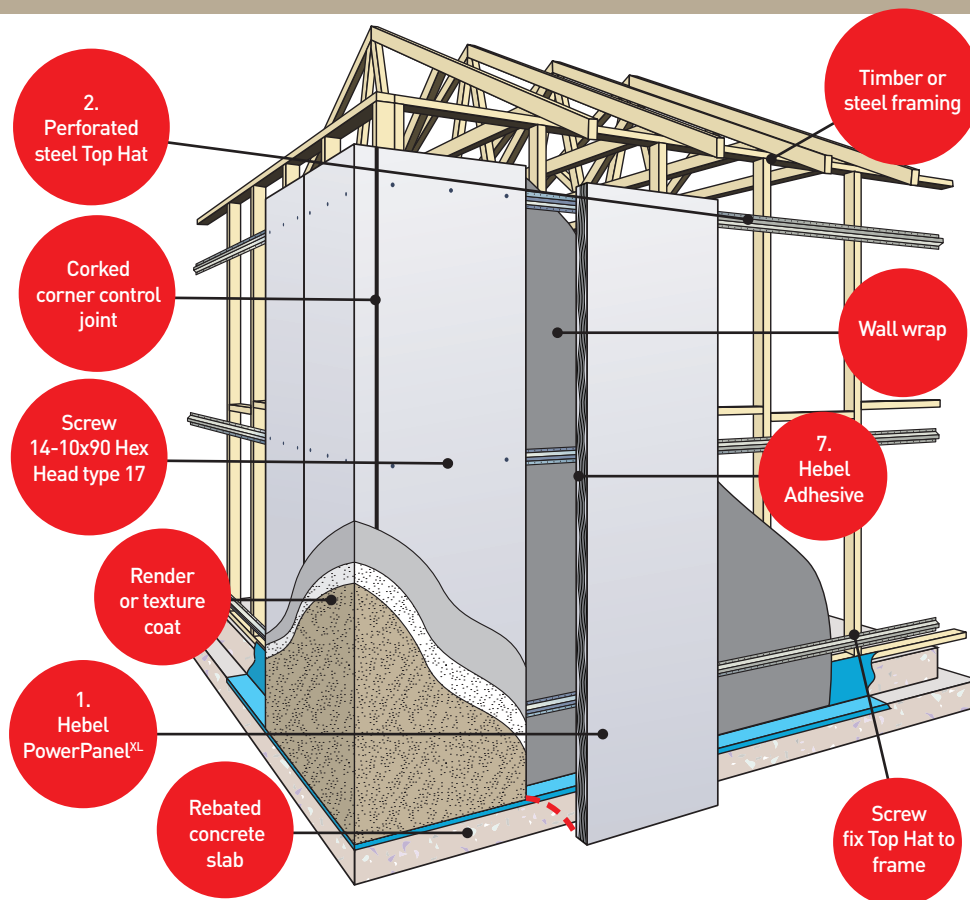


POWERPANEL^{XL}

FOR FAST SOLID WALLS WITH A RENDERED FINISH AND OUTSTANDING THERMAL AND FIRE RESISTANCE.



Hebel PowerPanel^{XL} has been developed and tested for low rise residential external and zero boundary wall systems, which are warranted by CSR Hebel.



POWERPANEL^{XL} EXTERNAL WALL SYSTEM

The PowerPanel^{XL} system consists of 75mm thick, steel-reinforced AAC panels, vertically secured to the structural frame via horizontal perforated top hat sections. The wall is then rendered with a recommended coating system – providing a faster way of constructing external facades for residential builds.

- **Fire rating:** Up to 180/180/180 when subjected to an external fire source (FRL of wall system without construction joints)
- **Acoustic:** Up to $R_w + C_{tr}$ 33
- **Thermal:** $R_{0.6}$ $m^2.K/W$ for 4.0% M.C for panel only and up to $R_{3.8}$ $m^2.K/W$ in wall system
- **Common Wall Thickness:** 199mm, based on 90mm stud + 10mm plasterboard + 24mm top hat + 75mm PowerPanel^{XL}
With variations in stud thickness and top hats, wall widths can vary between 173mm to 212mm.

Note: Refer to relevant Design and Installation Guide on website or contact Technical services team for further details on performance of variety of wall system configurations.

POWERPANEL^{XL} STANDARD PANEL SIZES

75mm thick x 600mm wide x 2400mm, 2550mm, 2700mm, 2800mm, 2850mm, 3000mm and 3300mm long.

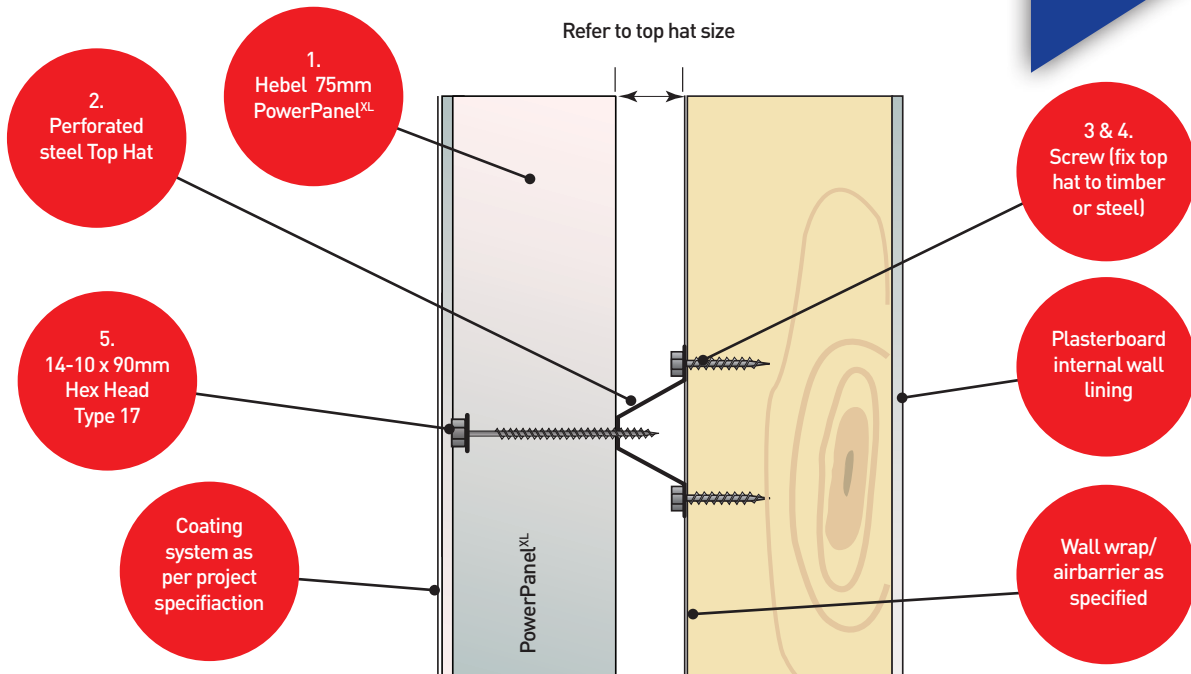
EXTERNAL WALLS - HOUSES & LOW RISE MULTI RESIDENTIAL

- delivers quality solid walls finished with a flexible coating system
- excellent thermal performance – PowerPanel^{XL} has almost 2 times more thermal resistance than a standard brick
- fast to construct - one standard Hebel panel is the equivalent of 75 traditional bricks, which means an average sized home can go up as quickly as within 3 days when installed by experienced Hebel installers
- good acoustic performance
- patterns can be machined or routed into the panels to produce an individual, attractive finish
- system meets or exceeds all six Bushfire Attack Level (BAL) categories

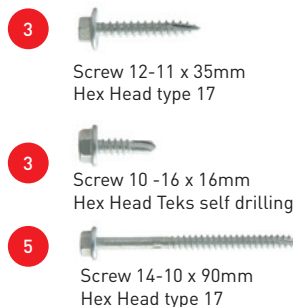
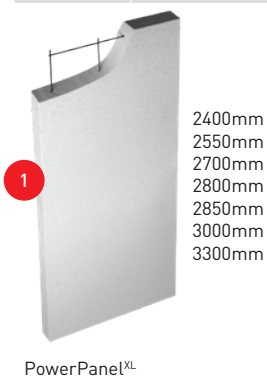
POWERPANEL^{XL} EXTERNAL CLADDING



FOR FAST SOLID WALLS WITH A RENDERED FINISH AND OUTSTANDING THERMAL AND FIRE RESISTANCE.



ITEM	DESCRIPTION	LOCATION
1	Hebel 75mm PowerPanel ^{XL}	Entire wall
2	Perforated Top Hat 24mm x 4.8m x 0.42mm BMT or 35mm x 4.8mm x 0.55mm BMT	Attaching PowerPanel ^{XL} to frame
3	Screws to fix Top Hat to timber stud Screw 12-11 x 35mm Hex Head type 17	Fix Top Hat to timber frame
4	Screws to fix Top Hat to steel stud Screw 10-16 x 16mm Hex Head Tekes, self drilling	Fix Top Hat to steel frame
5	Screws to fix PowerPanel ^{XL} to Top Hat Screw 14-10 x 90mm Hex Head type 17	Fix PowerPanel ^{XL} to Top Hat
6	Hebel Anti-Corrosion Paint 500ml	Used on exposed reo
7	Hebel Adhesive 20kg bag	Used on all panel joints (except control joints)



For more information contact 1300 369 448 www.hebel.com.au

